



---

## **Attachment J**

### **Digital Inclusion Plan**

The project is located in Butler County, NE and proposes to serve 345 locations. According to the 2020 U.S. Census and the 2021 American Community Survey, there are 3,417 households in Butler County. The median household income is \$64,837, slightly less than the nationwide median of \$69,717, and the poverty rate is 8.2%. Notably, 14.3% of residents in Butler County reported living without an internet subscription, compared with only 9.7% nationwide. These figures, in conjunction with the lack of robust existing service as demonstrated below, suggest a community with an above-average need for expanded broadband access that is affordable and accessible. In preparing this application, Vyve made a concerted effort to contact local community leaders and discuss their service and affordability concerns. As this project covers unincorporated rural areas outside of any town or city, we reached out to the Butler County government as discussed in full detail in [Attachment G](#).

#### **Community Needs**

The COVID-19 public health emergency immediately emphasized the consequences of the digital divide, as communities without widespread access to high-speed internet were unequipped to adapt to the rapid societal changes. Students, suddenly moved to remote learning, found themselves unable to consistently attend virtual classrooms or complete homework assignments online; many workplaces whose employees lacked reliable internet during work-from-home arrangements suffered losses in productivity; and the rise of telemedicine created new gaps in healthcare access among Americans. Vyve's Bellwood West Expansion project will address these needs by ensuring that high-speed service is not only available to residents, but more importantly, affordable to even the most disadvantaged households at all income levels.

The proposed project area consists of rural residential neighborhoods that are served by unreliable wireless service with speeds less than 100/20 Mbps. At such low speeds, residents would find it difficult to work or study from home, stream digital entertainment, and meet the data needs of an entire family at the same time. Our project will bring high-speed fiber internet to these communities and ensure reliable access to telehealth, remote learning, shopping, and



entertainment platforms. In addition, we will also offer phone services, third-party over-the-top video products, and a suite of commercial products.

### **Affordability**

Affordability has traditionally been a major obstacle to broadband adoption efforts. Vyve already offers 105/105 Mbps speeds in comparable Nebraska markets for \$59.99/month, which is regularly discounted for new subscribers through various promotional and introductory offers. In addition, we have been a proud participant in the FCC's Affordable Connectivity Program (ACP) from its inception and publicly offer the ACP discount to low-income subscribers. To further maximize accessibility through this Digital Inclusion Plan, Vyve plans to offer 105/105 Mbps speeds without any data caps or throttling for \$49.99/month to customers in the proposed project area. These rates are eligible for the ACP discount, and when combined with our introductory and promotional rates, some customers may have no out-of-pocket costs for their internet service.

### **Existing Service**

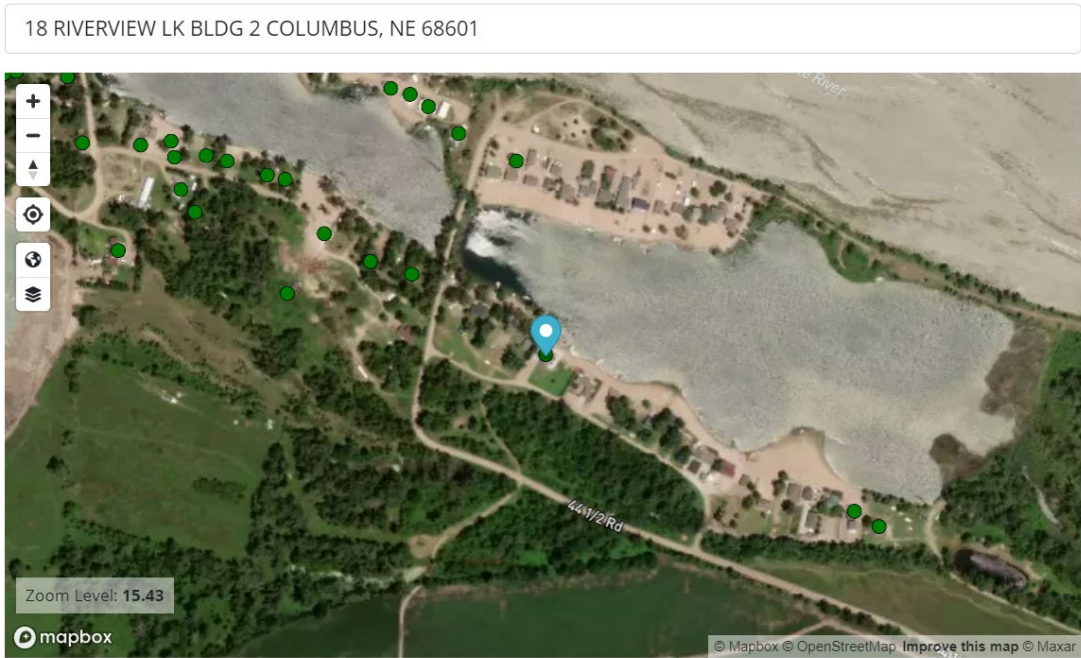
The proposed project area is currently underserved by existing broadband internet service providers. From firsthand knowledge and observation of the project area, our operations team is not aware of any existing fixed broadband provider with speeds exceeding 100/20 Mbps. We researched a representative sample of addresses in the project area, a few of which are below. Three providers initially appeared to offer 100/20 Mbps speeds but did not hold up under scrutiny.

The first provider is Space Exploration Holdings, LLC, whose NGSO satellite service is not considered "served" under the program rules. The second provider is AMG Technology Investment Group LLC dba Nextlink, who claim 100/20 Mbps fixed wireless service in many locations. However, as shown below, their website only indicates that speeds up to **100/10 Mbps** are available for their highest cost plan, which remains unaffordable for low-income subscribers even after the ACP discount. The third provider is LTD Broadband LLC, who claim 250/250 Mbps fixed wireless service in some locations; however, as shown below, they only advertise wireless service up to **35 Mbps** at significantly unaffordable rates.



**Figure 1.1.** Sample address in project area from the FCC National Broadband Map.

## Location Summary



### Selected Location

**18 RIVERVIEW LK BLDG 2** Location Challenge  
**COLUMBUS, NE 68601**

Status: Served | Residential | Unit Count: 1

---

**Broadband** ⚙️

**Type** Residential  
**Technology** Any Technology  
**Speed** 25/3 Mbps or greater  
**Data As Of** Jun 30, 2022 (Last Updated: 2/1/23)

### Residential | Business

Availability Challenge 2

Provider	Technology	Down (Mbps)	Up (Mbps)	Chall.
▶ AMG Technology Investment Group LLC	Licensed Fixed Wireless	100	20	
▶ Frontier Communications Corporation	Copper	0.2	0.2	
▶ Hughes Network Systems, LLC	GSO Satellite	25	3	
▶ JAB Wireless, Inc.	Unlicensed Fixed Wireless	50	10	
▶ LTD Broadband LLC	Unlicensed Fixed Wireless	250	250	
▶ NE Colorado Cellular, Inc.	Licensed Fixed Wireless	25	3	<span style="background-color: yellow; border-radius: 50%; padding: 2px;">1</span>
▶ Space Exploration Holdings, LLC	NGSO Satellite	350	40	



Figure 1.2. Actual advertised speeds of 100/10 Mbps by Nextlink for this address (<https://nextlinkinternet.com>).

**NEXLINK**  
INTERNET & PHONE

Select services for: 18 Riverview Lk, Columbus, NE, 68601, USA

**Wireless** (Select A Plan)  No Contract Pricing

NEX25 - MONTH TO MONTH	NEX50 - MONTH TO MONTH	NEX100 - MONTH TO MONTH
Download speeds up to <b>25 Mbps</b>	Download speeds up to <b>50 Mbps</b>	Download speeds up to <b>100 Mbps</b>
<b>\$39.95</b> per month	<b>\$59.95</b> per month	<b>\$79.95</b> per month
<b>SELECT</b>	<b>SELECT</b>	<b>SELECT</b>
<ul style="list-style-type: none"><li>- Good for 2-3 Users</li><li>- Up to 25 Mbps Download</li><li>- Up to 5 Mbps Upload</li><li>- No Data Caps!</li><li>- Check email and browse the web</li><li>- Use social media</li><li>- Stream music and videos</li></ul>	<ul style="list-style-type: none"><li>- Ideal for 4+ Users</li><li>- Up to 50 Mbps Download</li><li>- Up to 10 Mbps Upload</li><li>- No Data Caps!</li><li>- Check email and browse the web</li><li>- Use social media</li><li>- Stream music and videos</li></ul>	<ul style="list-style-type: none"><li>- Best for 4+ Users</li><li>- Up to 100 Mbps Download</li><li>- Up to 10 Mbps Upload</li><li>- No Data Caps!</li><li>- Check email and browse the web</li><li>- Use social media</li><li>- Stream music and videos</li><li>- Home monitoring and cameras</li><li>- Online gaming</li></ul>



**Figure 1.3.** Lack of wireless speeds matching claim of 250/250 Mbps fixed wireless on FCC National Broadband Map by LTD Broadband (<https://ltdbroadband.com/plans>).

 LTD Broadband

## Fixed Wireless Plans & Pricing

Fast | Unlimited | Local | No contracts | Fair prices

### - FAMILY 10 Mbps

Includes whole-home mesh Wifi

- from \$70/month

1 Month - \$80 (w/autopay)

3 Months - \$225 (\$75/month)

6 Months - \$438 (\$73/month)

**12 Months - \$840**  
**(\$70/month)**

### - ULTRA 25 Mbps

Includes whole-home mesh Wifi

- from \$80/month

1 Month - \$90 (w/autopay)

3 Months - \$255 (\$85/month)

6 Months - \$498 (\$83/month)

**12 Months - \$960**  
**(\$80/month)**

### - Home Office 35 Mbps

Includes whole-home mesh Wifi

- from \$110/month

1 Month - \$120 (w/autopay)

3 Months - \$345 (\$115/month)

6 Months - \$678 (\$113/month)

**12 Months - \$1320**  
**(\$110/month)**



Figure 2.1. Sample address in project area from the FCC National Broadband Map.

30 CLEAR LK COLUMBUS, NE 68601

**Selected Location** i

**30 CLEAR LK**  
**COLUMBUS, NE 68601** Location Challenge

Status: Served | Business | Unit Count: 1

---

**Broadband** ⚙️

**Type** Residential  
**Technology** Any Technology  
**Speed** 25/3 Mbps or greater  
**Data As Of** Jun 30, 2022 (Last Updated: 2/1/23)

**Residential** | Business Availability Challenge 2

Provider	Technology	Down (Mbps)	Up (Mbps)	Chall.
▶ AMG Technology Investment Group LLC	Licensed Fixed Wireless	100	20	
▶ Frontier Communications Corporation	Copper	45	3	
▶ Hughes Network Systems, LLC	GSO Satellite	25	3	
▶ JAB Wireless, Inc.	Unlicensed Fixed Wireless	50	10	
▶ JAB Wireless, Inc.	Licensed Fixed Wireless	25	5	
▶ NE Colorado Cellular, Inc.	Licensed Fixed Wireless	25	3	1
▶ Space Exploration Holdings, LLC	NGSO Satellite	350	40	



Figure 2.2. Actual advertised speeds of 100/10 Mbps by Nextlink for this address (<https://nextlinkinternet.com>).

**NEXTLINK**  
INTERNET & PHONE

Select services for: 30 Clear Lk, Columbus, NE, 68601, USA

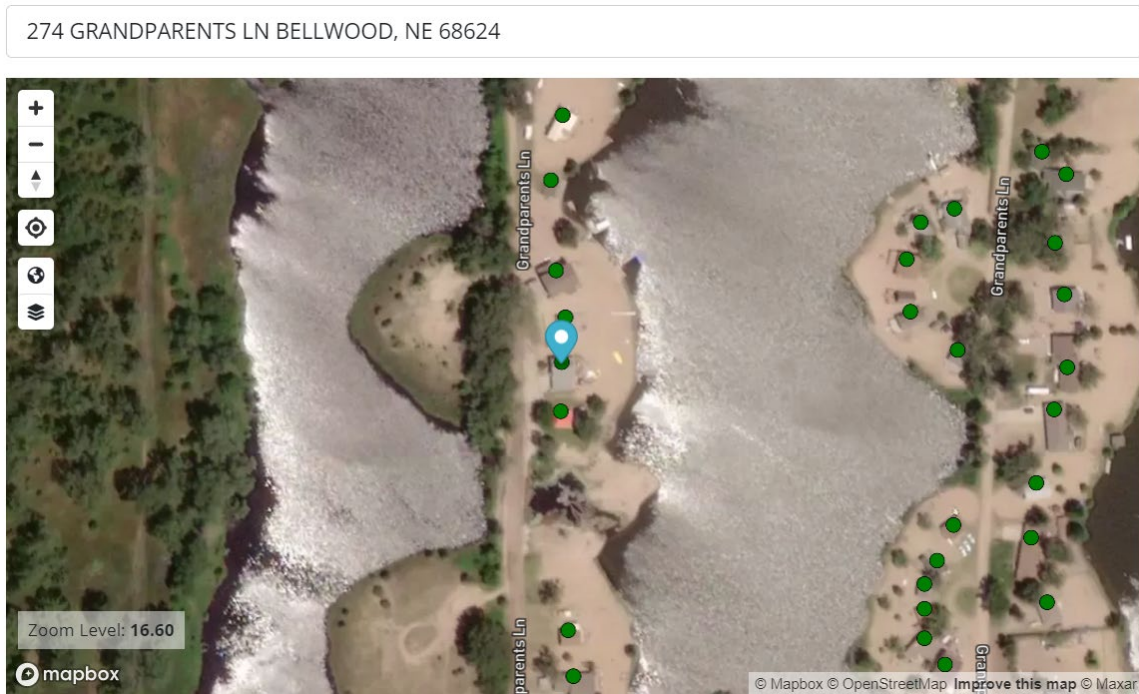
**Wireless** (Select A Plan)  No Contract Pricing

NEXt25 - MONTH TO MONTH	NEXt50 - MONTH TO MONTH	NEXt100 - MONTH TO MONTH
Download speeds up to <b>25 Mbps</b>	Download speeds up to <b>50 Mbps</b>	Download speeds up to <b>100 Mbps</b>
<b>\$39.95</b> per month	<b>\$59.95</b> per month	<b>\$79.95</b> per month
<b>SELECT</b>	<b>SELECT</b>	<b>SELECT</b>
<ul style="list-style-type: none"><li>- Good for 2-3 Users</li><li>- Up to 25 Mbps Download</li><li>- Up to 5 Mbps Upload</li><li>- No Data Caps!</li><li>- Check email and browse the web</li><li>- Use social media</li><li>- Stream music and videos</li></ul>	<ul style="list-style-type: none"><li>- Ideal for 4+ Users</li><li>- Up to 50 Mbps Download</li><li>- Up to 10 Mbps Upload</li><li>- No Data Caps!</li><li>- Check email and browse the web</li><li>- Use social media</li><li>- Stream music and videos</li></ul>	<ul style="list-style-type: none"><li>- Best for 4+ Users</li><li>- Up to 100 Mbps Download</li><li>- Up to 10 Mbps Upload</li><li>- No Data Caps!</li><li>- Check email and browse the web</li><li>- Use social media</li><li>- Stream music and videos</li><li>- Home monitoring and cameras</li><li>- Online gaming</li></ul>





**Figure 3.1.** Sample address in project area from the FCC National Broadband Map.



**Selected Location**

**274 GRANDPARENTS LN  
BELLWOOD, NE 68624**

[Location Challenge](#)

Status: **Served** | Business | Unit Count: 1

**Broadband**

**Type** Residential  
**Technology** Any Technology  
**Speed** 25/3 Mbps or greater  
**Data As Of** Jun 30, 2022 (Last Updated: 2/1/23)

**Residential** | Business

[Availability Challenge](#)

Provider	Technology	Down (Mbps)	Up (Mbps)	Chall.
▶ AMG Technology Investment Group LLC	Licensed Fixed Wireless	100	20	
▶ Hughes Network Systems, LLC	GSO Satellite	25	3	
▶ JAB Wireless, Inc.	Unlicensed Fixed Wireless	25	5	
▶ Space Exploration Holdings, LLC	NGSO Satellite	350	40	
▶ Viasat, Inc.	GSO Satellite	50	3	





Figure 3.2. Actual advertised speeds of 100/10 Mbps by Nextlink for this address (<https://nextlinkinternet.com>).

**NEXTLINK**  
INTERNET & PHONE

Select services for: Grandparents Ln, Bellwood, NE, 68624, USA

**Wireless** (Select A Plan)  No Contract Pricing

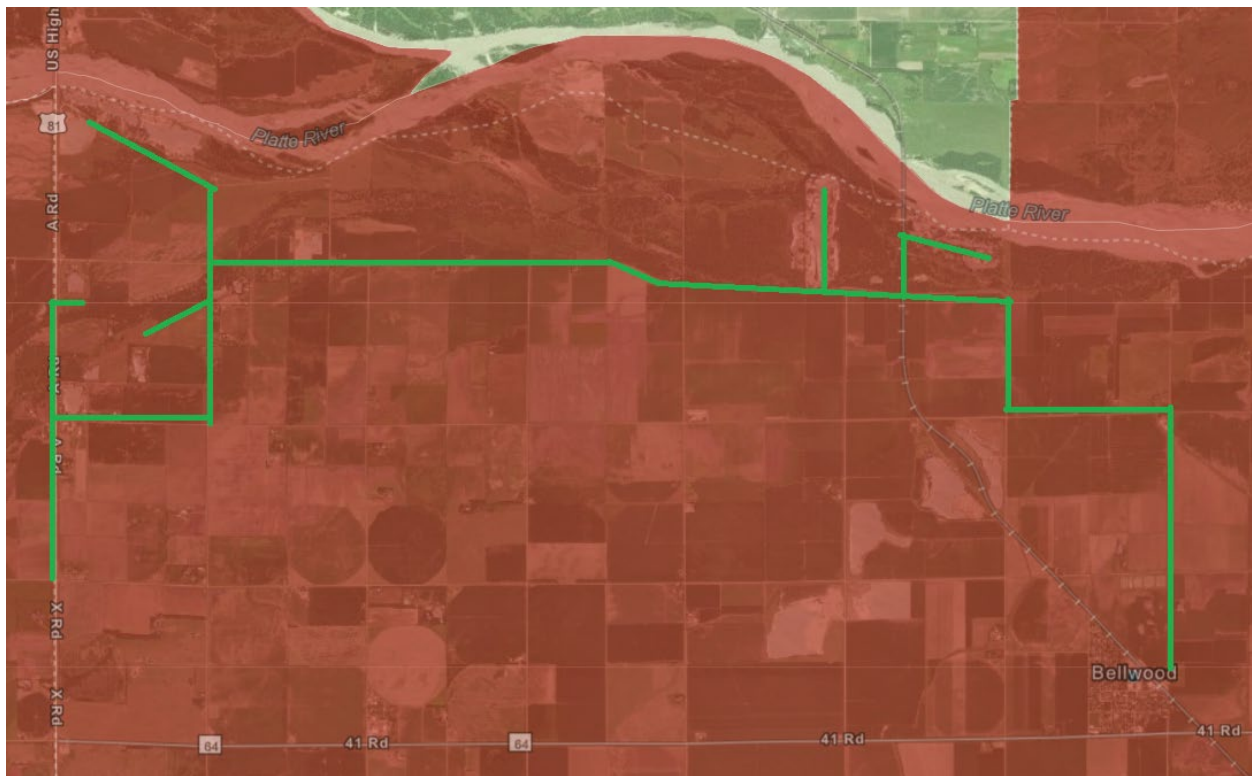
NEXt25 - MONTH TO MONTH	NEXt50 - MONTH TO MONTH	NEXt100 - MONTH TO MONTH
Download speeds up to <b>25 Mbps</b>	Download speeds up to <b>50 Mbps</b>	Download speeds up to <b>100 Mbps</b>
<b>\$39.95</b> per month	<b>\$59.95</b> per month	<b>\$79.95</b> per month
<b>SELECT</b>	<b>SELECT</b>	<b>SELECT</b>
<ul style="list-style-type: none"><li>- Good for 2-3 Users</li><li>- Up to 25 Mbps Download</li><li>- Up to 5 Mbps Upload</li><li>- No Data Caps!</li><li>- Check email and browse the web</li><li>- Use social media</li><li>- Stream music and videos</li></ul>	<ul style="list-style-type: none"><li>- Ideal for 4+ Users</li><li>- Up to 50 Mbps Download</li><li>- Up to 10 Mbps Upload</li><li>- No Data Caps!</li><li>- Check email and browse the web</li><li>- Use social media</li><li>- Stream music and videos</li></ul>	<ul style="list-style-type: none"><li>- Best for 4+ Users</li><li>- Up to 100 Mbps Download</li><li>- Up to 10 Mbps Upload</li><li>- No Data Caps!</li><li>- Check email and browse the web</li><li>- Use social media</li><li>- Stream music and videos</li><li>- Home monitoring and cameras</li><li>- Online gaming</li></ul>



**Other Evidence of Broadband Need**

In addition, the NTIA’s Indicators of Broadband Need Map shows that the entire proposed project area has median fixed broadband speeds below 25/3 Mbps.

**Figure 4.** Rough sketch of the proposed project route overlaid on top of the NTIA’s Indicators of Broadband Need Map.



Level	Indicator of Broadband Need	Yes	No	No Data
County	Speed Tests - M-Lab Median Speeds Fixed Broadband Below 25/3 Mbps			
	Usage - 75% or More of Devices Connect to Microsoft Updates/Services via Fixed Broadband Download Speeds below 25 Mbps			