

Nebraska Public Service Commission

300 The Atrium, 1200 N Street

P.O. Box 94927

Lincoln, Nebraska 68509-4927

(402) 471-3101



January 5, 1989

Mr. William E. Nichol
President of the Nebraska
State Legislature
State Capitol, Room 2315
Lincoln, Nebraska 68509

Dear Mr. President, Mr. Speaker, and Honorable Members of the
Unicameral:

We are pleased to submit to you the Commission's 1988 Annual
Report on Telecommunications. This report covers the period of
November 1, 1987 to October 31, 1988.

This report is submitted in compliance with the Telecommuni-
cations Act of 1986 and specifically addresses the items cited in
§86-804, Neb. Rev. Stat. (1943) as amended of that Act.

Respectfully submitted,

Daniel G. Urwiller

Daniel G. Urwiller, Chairman

Eric Rasmussen

Eric Rasmussen, Commissioner

Duane D. Gay

Duane D. Gay, Commissioner

James F. Munnelly

James F. Munnelly, Commissioner

Harold D. Simpson

Harold D. Simpson, Commissioner

COMMISSIONERS:
DUANE GAY
JAMES F. MUNNELLY
ERIC RASMUSSEN
HAROLD SIMPSON
DANIEL G. URWILLER

EXECUTIVE SECRETARY:
DWIGHT R. WININGER

**ANNUAL REPORT TO THE LEGISLATURE
ON THE STATUS OF
THE NEBRASKA TELECOMMUNICATIONS INDUSTRY**

NEBRASKA PUBLIC SERVICE COMMISSION

January 5, 1989

Nebraska Public Service Commission
300 The Atrium
1200 "N" Street
P.O. Box 94927
Lincoln, Nebraska 68509-4927
(402) 471-3101
1-800-526-0017 (Instate only)

TABLE OF CONTENTS

	<u>Page</u>
Executive Summary	i
1. A review of the quality of telecommunications service being provided to the citizens of Nebraska	1
Telephone Complaints	2
Consumer Toll Free Hotline	6
Service Testing	7
2. A review of the availability of diverse and affordable telecommunications services to all of the people of Nebraska	9
Availability of Service	10
Telephone Development	11
Link Up Nebraska	18
Equal Access	19
Extended Area Service	21
Central Office Technology	22
3. A review of the level of rates of local exchange and interexchange companies	23
Financial Data	24
Average Monthly Basic Exchange Rates	32
EAS - Rate - Access Line Data	40
Comparison of Interexchange Rates	51
Conclusion and Recommendations	55
Appendix I, 1918 Telephone Service	61
Appendix II, Trends in Legislation	64
Appendix III, Applications and Rate Lists	74

EXECUTIVE SUMMARY

The Nebraska telecommunications industry is a growing industry, one which has almost unlimited potential in our economy.

Changes in regulatory scope and power, however, create problems. The Commission and the industry can work out some of these problems; however, a solution between competition and service remains unattainable.

No doubt the regulatory changes were beneficial to the industry, yet this Commission also has to consider the various needs of consumers. Legislative policies designed to promote economic well-being in our state may threaten consumers' welfare in the future. The Commission and the Legislature need to maintain their active roles in order to grapple with the policy goals of the future.

Under the new deregulation environment in Nebraska, the telecommunications industry currently has the freedom to use all of its resources and skills to compete successfully with the new entrants in the marketplace and maintain the traditional excellence and reasonableness of the service it offers. It is also very important to this Commission that all citizens of Nebraska share in the fruits of deregulation.

If this industry does not meet the needs of its customers at reasonable prices, the groundwork for cooperation between the Commission and the industry will certainly deteriorate.

The Commission is attempting to address each change and important issue with the leadership necessary to reach an intelligent solution. Throughout the past year, the Nebraska Public Service Commission has provided leadership by drawing upon the industry's expertise and fostering a willingness to work together for a common purpose. At the heart of this report is the desire to make Nebraska's telecommunication system the best in the United States in price, technology and availability.

Throughout the report the Commission has spotlighted certain problems, trends and issues including:

- Telephone Complaints
- Consumer Toll Free Hotline
- Service Testing
- Availability of Service
- Telephone Development
- Link Up Nebraska
- Equal Access
- Extended Area Service
- Central Office Technology
- Financial Data
- Average Monthly Basic Exchange Rates

- EAS - Rate - Access Line Data
- Comparison of Interexchange Carrier Rates
- Trends in Governmental Roles

To help the Legislature make informed decisions in this new environment, the Commission has several recommendations regarding the new law. During the past two years since deregulation, the major players in telephone deregulation in the state have struggled over the implementation of LB 835 (1986). It is predicted that service and rate changes made in the last two years will influence the telecommunications marketplace in Nebraska for years to come.

The Commission has found it necessary under the new deregulation environment to regulate new entrants into the industry more aggressively. For example, United Telephone Long Distance, MidAmerican Long Distance Telephone Company and International Telecharge, Inc. all made applications for certification in the state this year. The Commission had serious reservations regarding each of these applications and chose to hold hearings for further investigation because once certified in the state, no rate regulation exists thereafter. The Commission will continue this aggressive monitoring while at the same time encouraging competition.

In light of the ever changing issues involved in the telecommunications industry, coordinating a smooth transition from a regulated industry to a competitive marketplace has been a concern for this Commission.

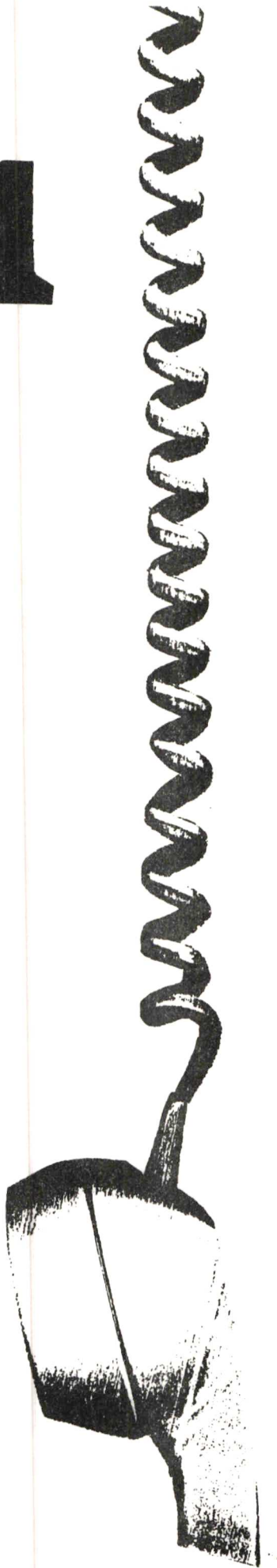
Recommendations

1. Again this Commission's first recommendation as mentioned in the past report is to re-regulate those services which are indispensable and where no alternative to the service is available.
2. Companies are required to file rate lists for new rates and services which automatically become effective ten days after notice to the Commission. The Commission is generally not opposed to the filing of rate lists; however, if complaints are received after the rate list is filed and becomes effective, the Commission should be able to review it. It should then be up to the company to prove that the rates are reasonable. Past experience has shown that nonsubstantive changes in tariff or reductions in rates should be automatic without the proposed complaint review.
3. The Commission should have the general authority to re-regulate any deregulated service or company, retaining continuous jurisdiction to modify or revoke any exempted service if it is in the public interest.

4. The sunset provision of 1991 set out in LB 835 concerning the right of the consumer to petition should be repealed. The right of the consumer to petition is an important guarantee to the consumers of the state that if their telephone company raises rates excessively, for the monopolistic basic local service, the consumers will have an opportunity to have the case heard and the right to appeal the decision to the Supreme Court.

5. The sunset provision of 1991 set out in LB 835 concerning the averaging of toll rates should be repealed. If toll rates are de-averaged, consumers in Western Nebraska may no longer be able to afford service. If the time should ever come when de-averaging toll was advisable, the Commission would then recommend the change to the Legislature.

1



A REVIEW OF THE QUALITY OF
TELECOMMUNICATIONS SERVICES BEING
PROVIDED TO THE CITIZENS OF NEBRASKA.

TELEPHONE COMPLAINTS

Pursuant to the Commission's Rules and Regulations, when a subscriber has a telephone complaint, the complaint shall first be made to the telephone company involved. If the telephone company fails to resolve the complaint to the subscriber's satisfaction, then the Nebraska Public Service Commission will work with the subscriber and the telephone company to resolve the complaint.

During the last 12 months, 237 complaints were received from telephone subscribers. Table 1 categorizes the complaints and shows a comparison to the number of complaints received the previous year. The number of complaints increased 163%.

Table 1

<u>Complaints</u>	<u>November 1, 1986 to October 31, 1987</u>	<u>November 1, 1987 to October 31, 1988</u>
Service	30	84
Billing	58	86
Miscellaneous	<u>2</u>	<u>67</u>
Total	90	237

Of the 237 complaints received, 73.4% were against either the Local Exchange Carrier (LEC) or an Interexchange Carrier (IXC). Table 2 provides a further breakdown.

Table 2

<u>Complaints</u>	<u>Number</u>	<u>Percent of Total</u>
Local Exchange Carriers	159	67.1
Automatic Dialers	25	10.5
976	20	8.5
Interexchange Carriers	15	6.3
Alternate Operator Services	15	6.3
Others	<u>3</u>	<u>1.3</u>
Total	237	100.0

The categories in Table 2 are explained more fully below. The explanation also includes examples of the types of complaints the Commission receives.

LEC's

Local exchange service is provided by 38 regulated companies in Nebraska. Of these, the 5 largest companies serve all but 7% of the total access lines.

Table 3 shows the number of complaints received against each of the 5 largest telephone companies and the 33 other telephone companies.

Table 3

<u>LEC</u>	<u>Complaints</u>	<u>Access Lines</u>	<u>Percent of Total Access Lines</u>
LT&T	56	206,023	26.0
US West	55	439,006	55.4
GTE North	12	43,653	5.5
United	9	22,868	2.9
Great Plains	6	24,566	3.1
Others	<u>21</u>	<u>55,835</u>	<u>7.1</u>
Total	159	791,951	100.0

Complaints against Local Exchange Carriers (LEC's) are divided into 3 categories - service, billing and miscellaneous.

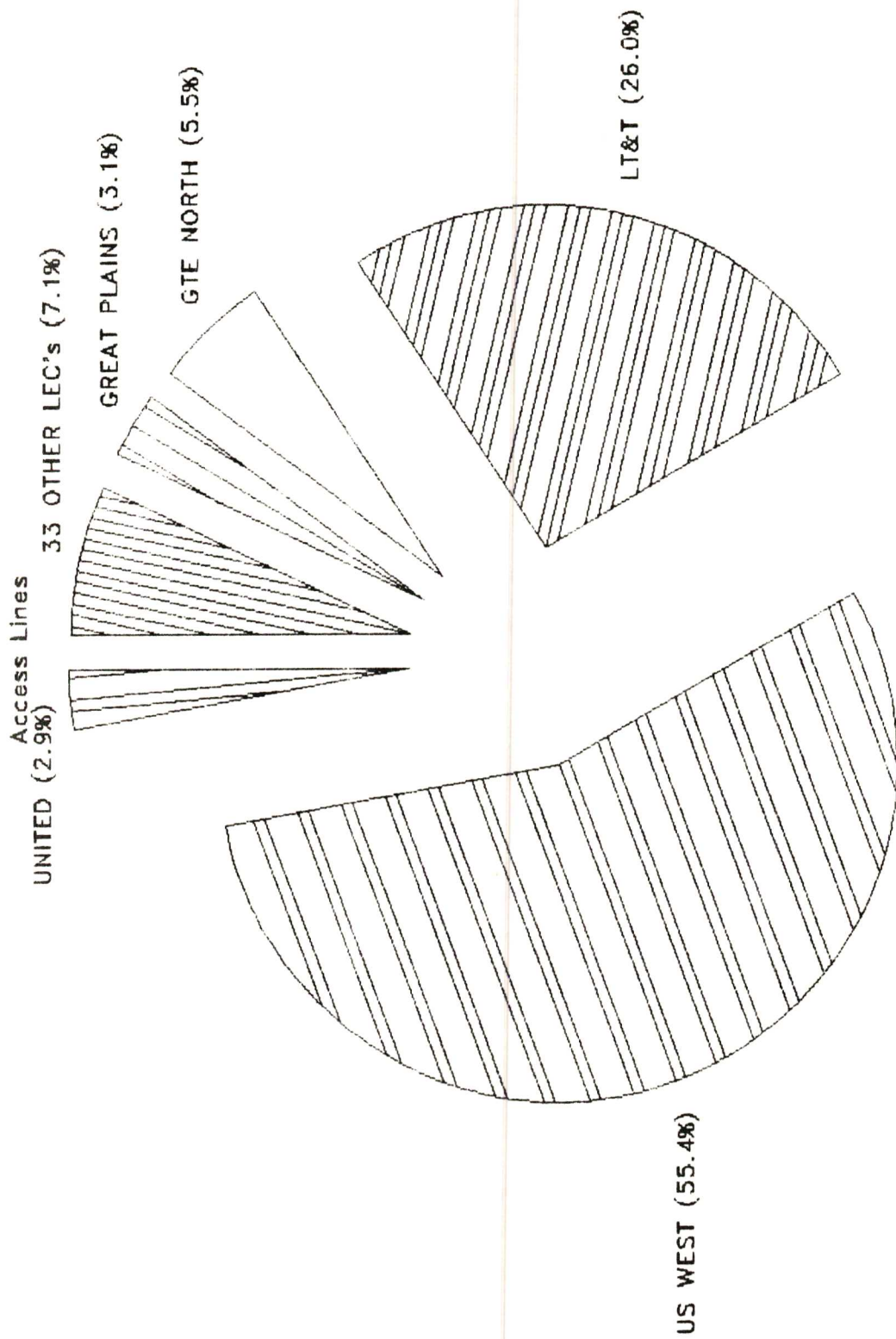
A complaint that there is trouble on the line such as static, cut-offs during calls, or the line going dead are examples of service complaints.

Billing complaints usually arise when a subscriber has repeatedly asked the company to take a charge off the monthly bill, such as a long distance call which a subscriber disputed, but which continues to appear on the bill.

Another typical billing complaint involves refusal of service or disconnection. In many instances, the subscriber has a past due bill and was disconnected. In order to re-establish service, the subscriber must pay off the old bill and make a deposit. Similarly, a subscriber who now has service will be threatened with disconnection unless the past due bill is paid and, in addition, the telephone company may require a deposit. In both these instances, the telephone company's policy must comply with the Commission's Rules and Regulations. While these requirements may make it difficult for some people to obtain or keep their service, it protects the telephone company from large uncollectible bills and other telephone subscribers from bearing the expense of the uncollectible accounts.

Other complaints are of a miscellaneous nature. Examples of complaints in this category are harassing or obscene telephone calls, errors in directory listings, an error in the subscriber's directory advertising or trouble with privately owned coin phones.

NEBRASKA LOCAL EXCHANGE CARRIERS



IXC's

Complaints against Interexchange Carriers (IXC's) are often billing problems such as being back-billed for calls made 2 years ago, receiving 4 months' billing at one time, or not being properly credited for a payment. Since equal access, there have also been complaints of a subscriber's long distance carrier being changed from one IXC to another without the subscriber's permission.

ADAD's

Most of the complaints against Automatic Dialing Announcing Devices (ADAD's) are not against a particular company, but rather ADAD's in general. People believe these calls to be a nuisance and don't like them tying up their line. Depending on the telephone company's central office, if the called party hangs up before the message is completed, it takes approximately 15-20 seconds to get a dial tone. The phone must be hung up long enough for the call to disconnect. If the phone is picked up before the call disconnects, the timing feature resets.

976/900

The 976 Dial-it services began as information services such as weather and sports information. Now some 976 vendors offer such controversial services as adult entertainment, talk or gab lines, and children's programming.

The problem with 976 services arises when an individual does not know the costs of the call or that there is a fee for calling the 976 prefix. In addition, minors unrestricted use of the telephone can result in staggering bills, not to mention the problem of a minor's access to adult subject matter.

Currently, U.S. West and AT&T are the only telecommunications companies in the state that offer 976 and 900 services. U.S. West's policy is to not offer 976 service for dial-a-porn type use or any use which violates state or local laws. In addition, U.S. West will be selecting which 976 services they will contract to bill on the subscriber's monthly local service bill.

U.S. West responded to parents' concern about their children's access to 976 service without consent by allowing residential blocking of 976 calls at no charge.

Although the Nebraska Commission can no longer regulate the use and misuse of 976 services like other commissions can across the United States, the Commission will work with any parent regarding outstanding bills resulting from 976 calls made by minors. Many states are researching ways of dealing

with 976 services. Blocking, forbidding advertisements to minors, forbidding live male or female answers, and limiting the total cost of the call are just a few of the solutions being researched.

AOS

Alternate Operator Services (AOS's) compete with AT&T and LEC operators. Typically, their service is through semi-public payphones in hotels, motels, and hospitals, and their rates have been higher than what people expect to be charged. In many cases, callers are routed to the AOS provider without the caller even realizing it. Some states have denied certification of AOS's on the basis the AOS does not appear to benefit the public. The Nebraska Public Service Commission is in the process of adopting rules and regulations to apply to AOS's. The only AOS authorized in Nebraska is International Telecharge, Inc. (ITI). Although the Nebraska Commission has had several complaints against ITI, only one complaint has been registered since the company was authorized to do business. ITI agreed not to charge rates higher than AT&T's; however, since the Commission has no rate authority in this matter, its hands are tied should ITI decide to charge higher rates than AT&T.

CONSUMER TOLL FREE HOTLINE (800-526-0017)

On June 3, 1988, the Nebraska Public Service Commission introduced a toll free number to be used by consumers to contact the Commission for assistance. The Commission believes that the quality of service provided by regulated industries must be monitored very closely in order to serve the public interest. It will no longer be a hardship for citizens in communities outside of Lincoln to call the Nebraska Commission with their complaints or inquiries.

The Nebraska Public Service Commission has attempted to make the toll free number known through press releases, flyers distributed to the telephone companies and to the county social service offices. The number should also be printed in the next telephone directory published by each of the telephone companies. When senators or their staff refer constituents to the Commission, it would be helpful to inform them of the toll free number (800-526-0017).

SERVICE TESTING

To ensure telecommunication service is adequate, the Commission has emphasized the importance of service testing in all telephone company central offices in the state.

The Commission has embarked on a concentrated program to test and inspect every central office in the state once every two years. A telecommunications technician was hired in 1988 with primary responsibilities in the area of quality of service provided by all telephone companies in the state.

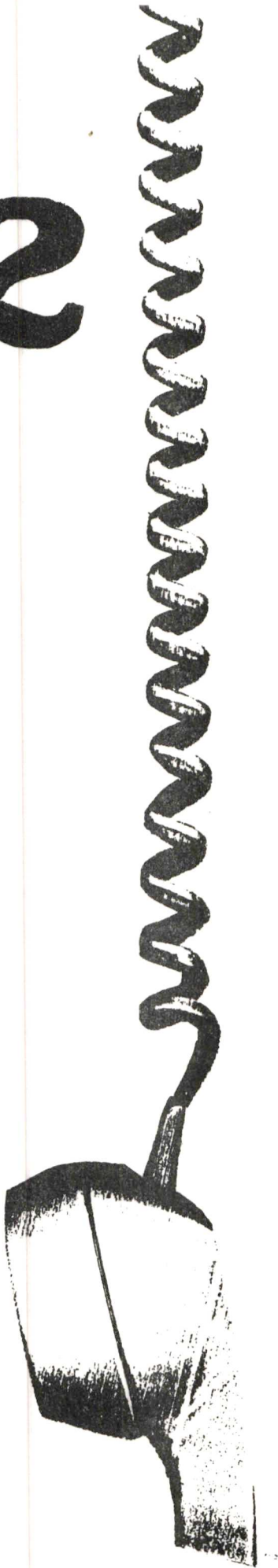
The testing includes placing local, EAS and toll calls through the use of a Northeast Electronics 41-3A central office analyzer. This equipment enables the operator to simulate subscriber usage by placing both dial pulse and touch tone calls using different loop and leak conditions. All trouble encountered is documented and cleared if possible, and each company is informed of the nature of the trouble encountered when Commission objectives are not attained. Follow-up testing is sometimes necessary to insure trouble has been cleared and necessary maintenance performed at locations which initially failed to meet these objectives. All tests and inspections are designed to make certain each certificated local exchange carrier in Nebraska is providing adequate telecommunications service and is in compliance with Commission Rules and Regulations. Each company is notified several days in advance of the staff's visit.

The following is the testing and inspection procedure:

1. Obtain two lines for local testing from different line groups.
2. Obtain two lines with automatic number identification for testing toll circuits.
3. Obtain lines for touch tone on local and toll where available.
4. Test EAS trunks where provided.
5. Inspect auxiliary generator, running procedure, and log books.
6. Inspect batteries and current log book.
7. Run approximately 400 local calls with a 98 percent completion rate objective.
8. Run approximately 400 toll calls with a 95 percent completion rate objective.
9. Run approximately 50 EAS calls to each EAS location at a 97 percent completion rate objective.

10. Local, toll, and EAS will be tested with 10 and 12 pulses per second (PPS), "A" leak and varying loop conditions.
11. Check offices for cleanliness and removal of old equipment and wiring.
12. When trouble is found while testing, every effort should be made to find the trouble and clear it. This includes local, toll, and EAS.
13. If an unusually large amount of trouble is found in any office, a retest will be required after ample repair time.
14. The company will be responsible for costs associated with these test calls.

2



A REVIEW OF THE AVAILABILITY OF DIVERSE
AND AFFORDABLE TELECOMMUNICATIONS
SERVICES TO ALL OF THE PEOPLE OF
NEBRASKA.

AVAILABILITY OF SERVICE

During the period covered by this report, International Telecharge, Inc., MidAmerican Long Distance Co. and United Telephone Long Distance Co. of the Midwest were authorized to provide interLATA interexchange service in Nebraska. There are now 11 such companies offering this service in the state as shown in Table 4.

Operator services, formerly offered only by some local exchange companies and AT&T Communications, are now also offered by International Telecharge, Inc. and Teleconnect.

Interexchange carriers introduced a number of new pricing plans for long distance service, WATS-type service and 800 service.

Perhaps the most significant new service offered during the past year was the introduction of Integrated Service Digital Network (ISDN) by US West Communications. ISDN is a digital service that provides an integrated voice/data capability. Using the public switched network, ISDN distributes voice, data, image and facsimile at either 144 kilobits per second (kbps) or 1.544 megabits per second (mbps).

Table 4

<u>Company</u>	<u>InterLATA Authority</u>	<u>Date Granted</u>	<u>IntraLATA Authority</u>	<u>Date Granted</u>
AT&T	X	12/83	X	12/86
US Sprint	X	8/85	X	12/86
MCI	X	8/85	X	12/86
Lintel Systems	X	3/86	N/A	
Teleconnect	X	11/86	X	3/87
TelaMarketing (TMC)	X	12/86	X	6/87
Dial-Net	X	2/87	N/A	
Western Union	X	10/87	N/A	
International Tele- charge, Inc. (ITI)	X	8/88	N/A	
United Telephone Long Distance	X	4/88	N/A	
MidAmerican	X	10/88	N/A	

TELEPHONE DEVELOPMENT

The following five pages compare telephone development in Nebraska counties and in the United States for the year 1980.

Nebraska shows up very favorably when compared to other states in having the fourth lowest percentage of occupied households without telephones.

Within the state, the county percentages vary from a low of 1.09% in Wheeler County to a high of 17.90% in Thurston County. High percentages also occur in Arthur, Sheridan, Sherman, Hooker, Scottsbluff, Saline, Knox, Butler, Banner, and Cherry Counties.

(Source, U.S. Census of Housing, 1980 the latest information available.)

Table 5

TELEPHONE DEVELOPMENT BY COUNTY
1980 Census Data (Estimates Based on a Sample)

COUNTY	OCCUPIED HOUSEHOLDS	HOUSEHOLDS WITHOUT TELEPHONES	PERCENT
Wheeler	368	4	1.09%
Dundy	1,148	15	1.31%
Logan	349	5	1.43%
Sarpy	26,303	442	1.68%
Hamilton	3,271	57	1.74%
Hayes	480	9	1.88%
Pierce	3,046	58	1.90%
Valley	2,170	42	1.94%
Wayne	3,332	73	2.19%
Loup	319	7	2.19%
Platte	10,084	222	2.20%
Buffalo	12,284	306	2.49%
Polk	2,322	58	2.50%
Antelope	3,202	83	2.59%
Cedar	3,819	101	2.64%
Johnson	2,040	55	2.70%
Cuming	4,052	111	2.74%
Kearney	2,543	72	2.83%
Lancaster	71,769	2,039	2.84%
Gosper	774	22	2.84%
Boone	2,681	77	2.87%
Pawnee	1,578	47	2.98%
Washington	5,257	157	2.99%
Dawes	3,498	107	3.06%
York	5,428	167	3.08%
Boyd	1,267	39	3.08%
Seward	5,258	162	3.08%
McPherson	221	7	3.17%
Stanton	2,152	70	3.25%
Gage	9,245	312	3.37%
Box Butte	5,038	173	3.43%
Perkins	1,361	47	3.45%
Sioux	663	23	3.47%
Dodge	13,292	472	3.55%
Nuckolls	2,590	92	3.55%
Harlan	1,688	60	3.55%
Frontier	1,344	49	3.65%
Douglas	146,129	5,351	3.66%
Chase	1,722	66	3.83%
Furnas	2,613	102	3.90%
Thomas	358	14	3.91%
Phelps	3,699	145	3.92%
Nemaha	3,200	126	3.94%
Dawson	8,179	326	3.99%
Grant	322	13	4.04%
Greeley	1,213	49	4.04%
Hall	17,463	706	4.04%

Table 5 (Cont.)

COUNTY	OCCUPIED HOUSEHOLDS	HOUSEHOLDS WITHOUT TELEPHONES	PERCENT
Deuel	963	39	4.05%
Cass	7,150	293	4.10%
Dixon	2,551	106	4.16%
Burt	3,371	141	4.18%
Howard	2,364	101	4.27%
Custer	5,271	226	4.29%
Adams	11,740	508	4.33%
Fillmore	3,009	133	4.42%
Lincoln	13,245	586	4.42%
Holt	4,790	212	4.43%
Madison	11,586	513	4.43%
Nance	1,712	76	4.44%
Hitchcock	1,536	69	4.49%
Dakota	5,716	257	4.50%
Red Willow	4,795	216	4.50%
Kimball	1,800	83	4.61%
Colfax	3,684	171	4.64%
Garden	1,130	54	4.78%
Thayer	2,922	140	4.79%
Keya Paha	479	23	4.80%
Otoe	5,801	283	4.88%
Garfield	914	45	4.92%
Keith	3,491	172	4.93%
Clay	3,012	152	5.05%
Brown	1,698	86	5.06%
Webster	1,915	97	5.07%
Rock	883	45	5.10%
Jefferson	3,936	204	5.18%
Blaine	307	16	5.21%
Saunders	6,603	347	5.26%
Franklin	1,743	93	5.34%
Richardson	4,479	239	5.34%
Cheyenne	3,935	211	5.36%
Merrick	3,129	183	5.85%
Morrill	2,230	132	5.92%
Cherry	2,502	150	6.00%
Banner	315	19	6.03%
Butler	3,379	208	6.16%
Knox	4,176	258	6.18%
Saline	4,925	324	6.58%
Scotts Bluff	13,813	909	6.58%
Hooker	378	25	6.61%
Sherman	1,530	114	7.45%
Sheridan	2,813	268	9.53%
Arthur	198	19	9.60%
Thurston	2,347	420	17.90%
Total	571,400	21,706	3.80%

[illegible]

4% - 5.99%

2% - 3.99%

Over 6%

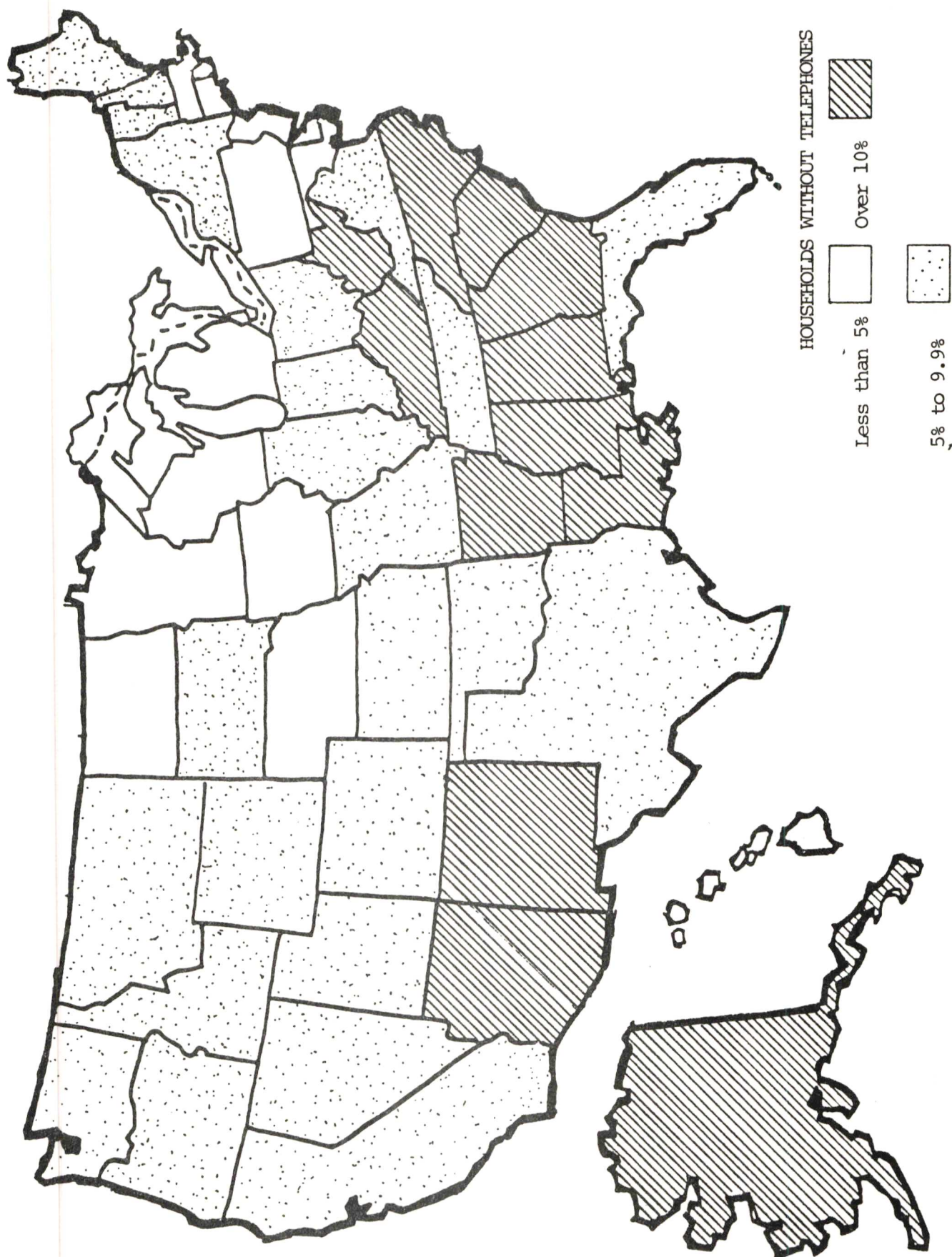
TABLE 6

TELEPHONE DEVELOPMENT
1980 Census (Data Based on a Sample)

STATE	HOUSEHOLDS		PERCENT
	OCCUPIED HOUSEHOLDS	WITHOUT TELEPHONES	
Wisconsin	1,652,261	54,520	3.30%
Minnesota	1,445,222	49,241	3.41%
Connecticut	1,093,678	37,307	3.41%
Nebraska	571,400	21,706	3.80%
Iowa	1,053,033	40,305	3.83%
Michigan	3,195,213	131,040	4.10%
Pennsylvania	4,219,606	175,357	4.16%
North Dakota	227,664	9,564	4.20%
Maryland	1,460,865	61,721	4.22%
Massachusetts	2,032,717	86,773	4.27%
New Jersey	2,548,594	120,703	4.74%
Rhode Island	338,590	16,088	4.75%
District of Columbia	253,143	12,111	4.78%
Delaware	207,081	10,172	4.91%
Hawaii	294,052	14,495	4.93%
Kansas	872,239	44,192	5.07%
Illinois	4,045,374	211,318	5.22%
California	8,629,866	454,894	5.27%
Utah	448,603	24,288	5.41%
Missouri	1,793,399	97,566	5.44%
Washington	1,540,510	87,640	5.69%
New Hampshire	323,493	18,801	5.81%
Ohio	3,833,828	226,509	5.91%
Colorado	1,061,249	66,560	6.27%
South Dakota	242,523	15,386	6.34%
Oregon	991,593	64,738	6.53%
Indiana	1,927,050	127,533	6.62%
Vermont	178,325	12,033	6.75%
Idaho	324,107	23,055	7.11%
Maine	395,184	29,371	7.43%
New York	6,340,429	474,632	7.49%
Montana	283,742	22,329	7.87%
Oklahoma	1,118,561	88,621	7.92%
Virginia	1,863,073	154,057	8.27%
Wyoming	165,624	13,844	8.36%
Texas	4,929,267	463,344	9.40%
Nevada	304,327	29,666	9.75%
Florida	3,744,254	367,641	9.82%
Tennessee	1,618,505	159,891	9.88%
West Virginia	686,311	73,278	10.68%
Arizona	957,032	103,475	10.81%
Louisiana	1,411,788	153,355	10.86%
North Carolina	2,046,291	223,912	10.94%

Table 6 (Cont)

Georgia	1,871,652	220,536	11.78%
Kentucky	1,263,355	149,841	11.86%
Arkansas	816,065	102,368	12.54%
South Carolina	1,029,981	129,431	12.57%
Alabama	1,341,856	173,225	12.91%
New Mexico	441,466	61,724	13.98%
Mississippi	827,169	137,564	16.63%
Alaska	131,463	21,956	16.70%
United States	80,392,673	5,669,677	7.05%



LINK UP NEBRASKA

The Nebraska Public Service Commission adopted the Link Up America program under the name "Link Up Nebraska" on June 7, 1988. This program offers a waiver of one-half of the service connection charges, up to \$30.00, for low-income households that have not had telephone service for at least three months.

The objectives of the Nebraska plan reflect the goals espoused by the FCC and the Federal-State Joint Board, as well as state specific goals. They are:

- (1) To work toward achievement and maintenance of universal telephone service in the state;
- (2) To aid those people not on the telephone network for whom service connection charges are a major deterrent to obtaining telephone service; and,
- (3) To provide benefit to both the rural and urban poor in the state.

The volunteer spirit of the telephone industry, the Nebraska Department of Social Services, the Nebraska Department on Aging, and the Community Action Agencies who assisted in drafting and promoting the Link Up Nebraska program reflect a true concern for the needy in Nebraska. In order to provide the program with the broad exposure needed in Nebraska, diverse methods such as radio talk shows, minority publications, notices to subscribers, flyers in agency letters and personal contacts have been used by these groups and the Nebraska Commission to promote Link Up Nebraska.

The connection charge waiver will be available to persons who are receiving Supplemental Security Income (SSI); Aid to the Aged, Blind or Disabled (AABD); Aid to Dependent Children (ADC); Medicaid; Energy Assistance; Food Stamps; and/or income which falls below the state established guidelines.

To apply for this assistance, an applicant should contact their local telephone company business office or the Nebraska Commission for more information.

Link Up Nebraska is sponsored by the FCC, the United States Telephone Association (USTA), and the Nebraska Commission in cooperation with the local telephone companies of Nebraska and state agencies and consumer organizations.

EQUAL ACCESS

Equal access is a coding method enabling telephone subscribers to choose the interexchange carrier that will route and bill their toll calls. In exchanges where equal access is offered, subscribers access their selected interexchange carrier simply by dialing a single digit identical to the procedure followed in placing toll calls prior to the availability of equal access. Subsequent to selecting an interexchange carrier, the local exchange carrier must code the subscriber's access line to route toll calls to the interexchange carrier selected by the subscriber. In exchanges where equal access is not available, subscribers must dial extra digits to access the alternative interexchange carrier of their choice.

In Nebraska, equal access is offered in 93 exchanges serving 544,177 access lines or 68.7% of the total access lines. Table 7 shows the exchanges where equal access is offered or will be offered on or before January 1, 1989, and the local exchange carrier serving each exchange. The number of interexchange carriers varies on each equal access ballot depending upon the interest shown by the interexchange carriers in serving the exchange.

Table 7

1/1/89 EQUAL ACCESS EXCHANGES

Exchange	Company	Exchange	Company
Ashland	LT&T	Liberty	LT&T
Auburn	LT&T	Lincoln	LT&T
Barneston	LT&T	Louisville	LT&T
Beatrice	LT&T	Martell	LT&T
Bellevue	US West	Mead	LT&T
Bellwood	LT&T	Morrill	United
Benedict	LT&T	Murdock	LT&T
Bennington	US West	Nebraska City	LT&T
Bradshaw	LT&T	Nehawka	LT&T
Brainard	LT&T	Nelson	LT&T
Brock	LT&T	Nemaha	LT&T
Brownville	LT&T	Octavia	LT&T
Bruno	LT&T	Omaha	US West
Cairo	US West	Osceola	LT&T
Carleton	LT&T	Otoe	LT&T
Ceresco	LT&T	Pickrell	LT&T
Clay Center	LT&T	Platte Center	GTE
Columbus	GTE	Plattsmouth	LT&T
Cook	LT&T	Pleasanton	GTE
Cordova	LT&T	Plymouth	LT&T
Cortland	LT&T	Polk	LT&T
Crete	LT&T	Raymond	LT&T
Davenport	LT&T	Riverdale	GTE
David City	LT&T	Ruskin	LT&T
Deweese	LT&T	Scottsbluff	United
Dorchester	LT&T	Seward	LT&T
Dunbar	LT&T	Shelby	LT&T
Edgar	LT&T	Sidney	US West
Elkhorn	US West	Springfield	US West
Exeter	LT&T	Sterling	LT&T
Fairmont	LT&T	Stromsburg	LT&T
Firth	LT&T	St. Libory	US West
Fremont	US West	Superior	LT&T
Friend	LT&T	Surprise	LT&T
Geneva	LT&T	Table Rock	LT&T
Gering	United	Union	LT&T
Grand Island	US West	Utica	LT&T
Gretna	US West	Valley	US West
Hallam	LT&T	Valparaiso	LT&T
Hansen	LT&T	Wahoo	LT&T
Harvard	LT&T	Waterloo	US West
Hastings	LT&T	Waverly	LT&T
Hebron	LT&T	Weeping Water	LT&T
Julian	LT&T	Western	LT&T
Juniata	LT&T	Wood River	US West
Kearney	GTE	York	LT&T
Kenesaw	LT&T		

93 Exchanges

544,177 Access Lines

EAS

Extended area service (EAS) is a service permitting subscribers in one exchange to place and receive two-way switched telecommunications to and from subscribers in one or more other exchanges without an interexchange toll charge. Several companies have a separate non-optional rate for the provision of EAS, which is itemized on the monthly bill; however, many companies currently have not established EAS adders to properly recover related expenses. For those companies, EAS expenses are included in the costs of providing basic local exchange service and recovered as a part of the basic local exchange rate. At present, 334 exchanges provide either 1-way or 2-way EAS to 691,826 access lines or 87.4% of the total access lines in service (See Table 8). The Lincoln Telephone Company provides EAS to 127 of its 137 exchanges representing 97.4% of their access lines in service. Historically, EAS has been provided on a non-optional basis; however, in July the Lincoln Telephone Company initiated EAS service to the community of Ceresco on an optional basis which may be the solution to future provision and pricing of EAS.

Current Nebraska Statutes define EAS as separate from basic local exchange service; however, where EAS is provided on a non-optional basis, subscribers logically conclude that EAS is an element of basic local exchange service and the regulatory framework set forth should apply to both services.

Table 8

AVAILABILITY OF EAS				
	EXCHANGES	ACCESS LINES	PERCENT ACCESS LINES	PERCENT EXCHANGES
<u>TOTAL STATE:</u>				
NO EAS	115	100,125	12.6	25.6
2-WAY EAS	261	643,728	81.3	58.1
1-WAY EAS	73	48,098	6.1	16.3
	449	791,951	100.0%	100.0%
<u>LT&T</u>				
NO EAS	10	5,388	2.6	7.3
2-WAY EAS	54	152,537	74.0	39.4
1-WAY EAS	73	48,098	23.3	53.3
	137	206,023	26.0%	30.5%
Source: 1988 Service & Rate Questionnaire, Nebraska Public Service Commission				

CENTRAL OFFICE DATA

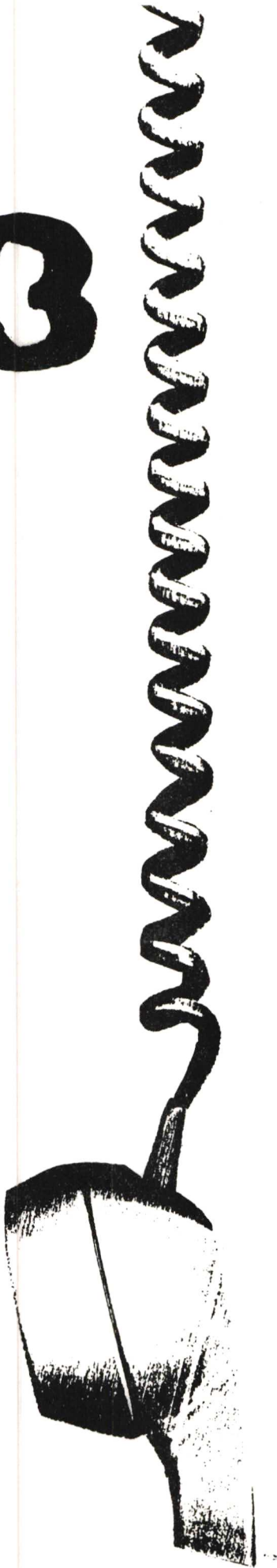
Central offices are the heart of the telecommunications network and an essential element to determining the quality of service provided by local exchange carriers. The technology deployed in these end offices impacts the availability of equal access as well as enhanced services such as call waiting, call forwarding and conference calling. Table 9 shows the type and approximate age of the technology deployed in Nebraska.

Table 9

Switching Technology			
Technology	Number of Switches	Percent Total	Age in Years
Step-by-step	217	46.8%	5-38
Leich Relay	15	3.2%	25-31
Crossbar	42	9.1%	11-29
Electronic	34	7.3%	4-18
Digital	<u>156</u>	<u>33.6%</u>	0-9
TOTAL	464	100.0%	
Source: 1988 Service & Rate Questionnaire, Nebraska Public Service Commission			

3

A REVIEW OF THE LEVEL OF RATES OF LOCAL
EXCHANGE COMPANIES AND INTEREXCHANGE
COMPANIES.



FINANCIAL DATA

The Public Service Commission audit staff has been reviewing the financial status of telephone companies in Nebraska through on-site audits of selected companies. The review is similar to the process which takes place in a rate application.

This procedure is designed to assure compliance with Commission orders regarding customer premise equipment deregulation, access charge residual shifts, depreciation guideline rates, and conversion from part 31 to part 32 of the accounting system. It also serves to verify financial information provided by the industry to the Commission, and assure that rate lists on file with the Commission are current and accurate.

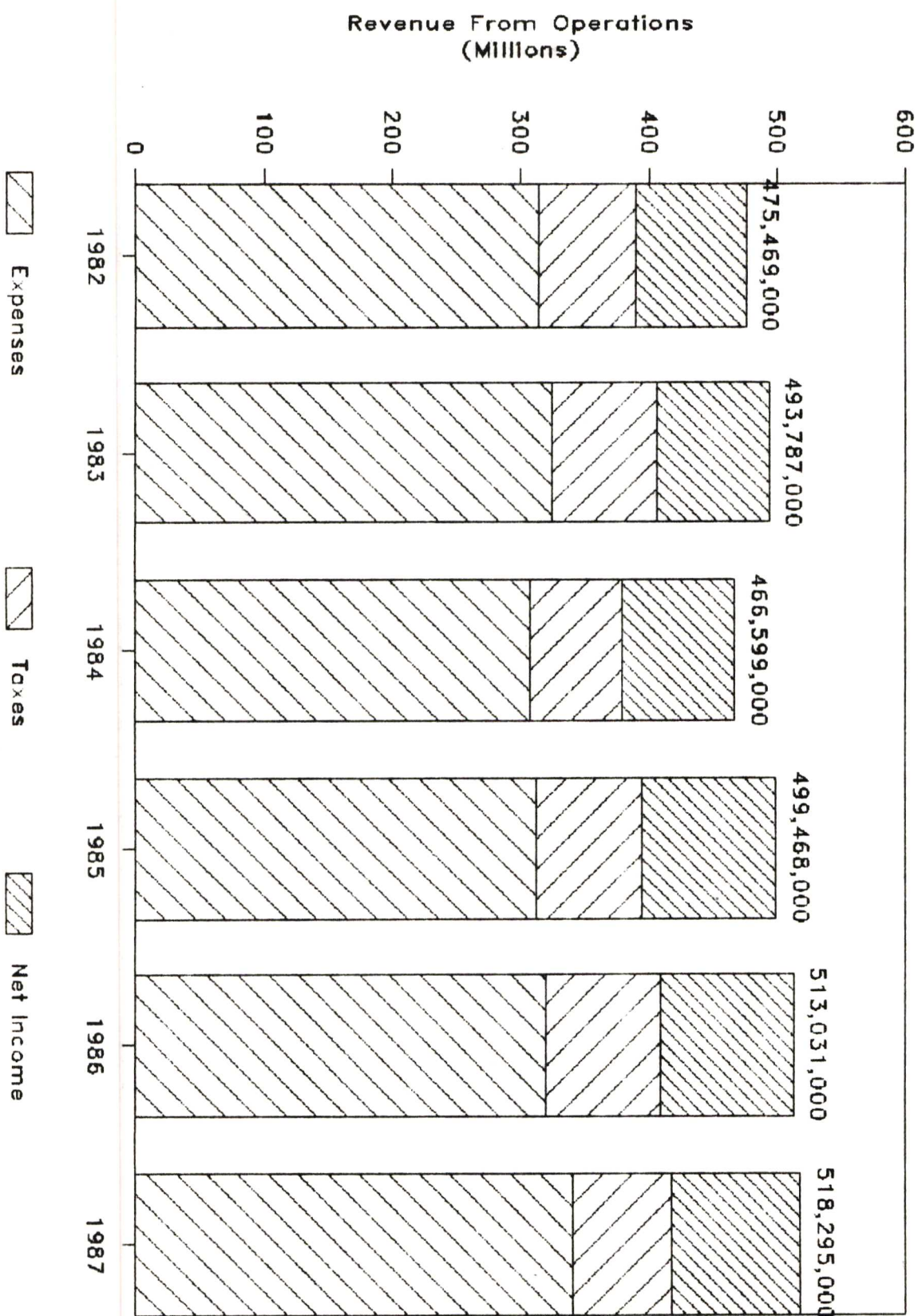
During 1987 and 1988, the industry has been in the process of implementing a new accounting system adopted by the Federal Communications Commission in a 1986 order. The basis for this change was that the existing accounting system was not flexible enough to respond to the needs of the FCC in regulating this complex and changing industry.

As a result of this change, the telephone industry has been required to develop a new system of accounts, disaggregate certain account information, redesign internal and external reports, and revise the separation process and access charge procedures. Each company then has had to determine whether the combination of capital-to-expense shifts, jurisdictional shifts, and costs of implementation would require rate relief. The Commission and the industry alike, will, in the future, be striving to determine if the costs imposed by this process will offset the perceived benefits in the original proposal.

The graphs that follow show operating revenues, expenses, taxes and net income in thousands of dollars for local exchange carriers for the years 1982-1987. Table 10 reflects the calculation of rates of return for each company.

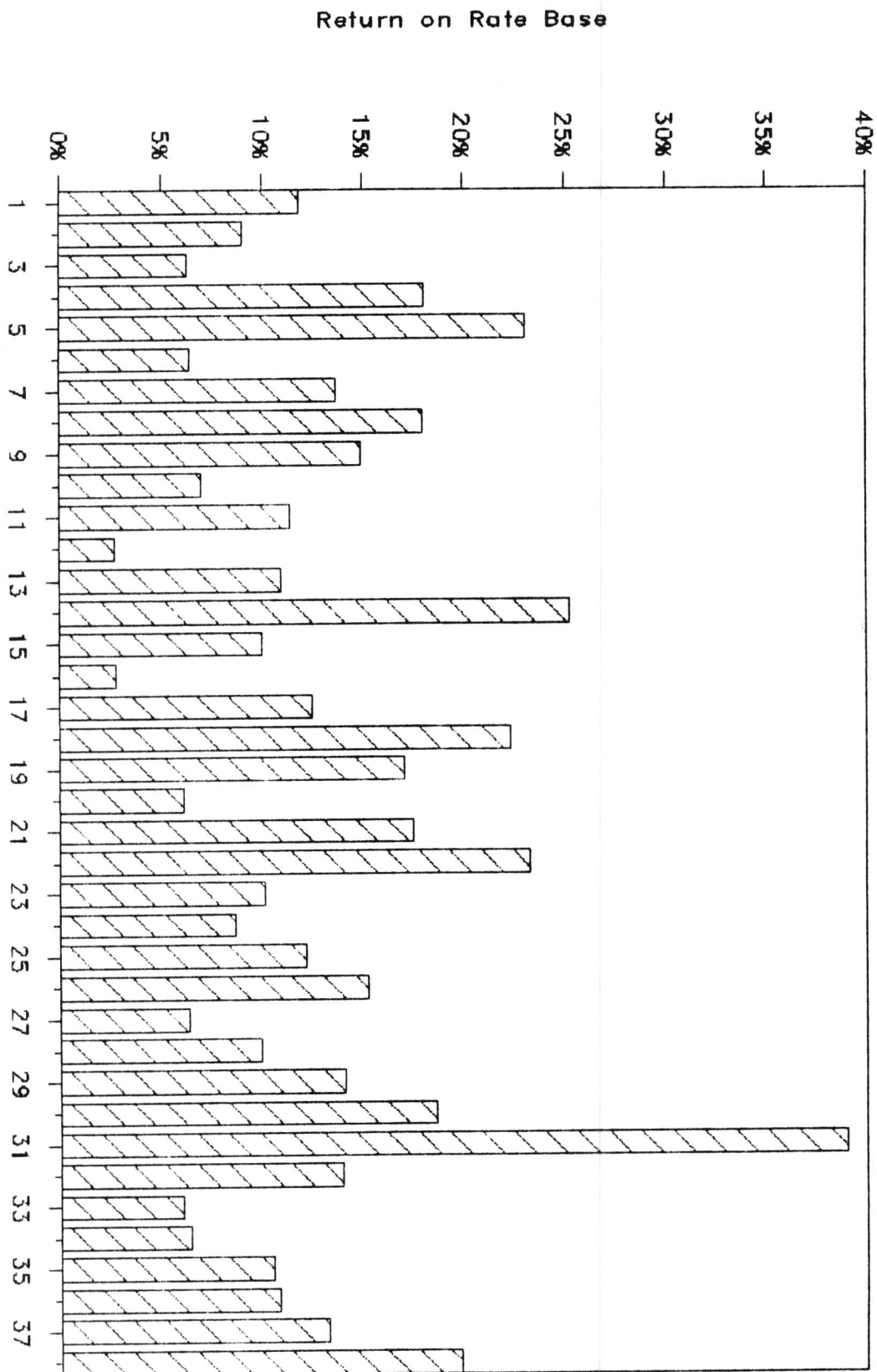
ALL NEBRASKA LOCAL EXCHANGE CARRIERS

USES OF OPERATING REVENUE



NEBRASKA LOCAL EXCHANGE CARRIERS

CALCULATED RATE OF RETURN (1987)



See Table 10 for company identification

Table 10

Local Exchange Carriers
1987 Rate Base and Return

	(1)	(2)	(3)	(4)	(5)	(6)	(7)	(8)
	Arapahoe	Arlington	Benkelman	Blair	Cambridge	Clarks	Consolidated Consolidated Telco Inc.	
Intangibles		2,825	1,047	7,817	1,284	512	1,285	2,494
Land	6,003	6,684	31,712	5,962	1,708	4,105	11,614	3,704
Buildings	170,235	205,740	452,936	567,281	80,501	172,617	261,258	68,180
C.O.E.	1,062,110	398,901	1,089,588	2,790,733	441,480	674,333	3,418,607	1,047,531
Station Apparatus	133,368		177,335		85,901	91,335	106,867	48,631
Station Connections		80,349	58,099	544,285		21,338	30,166	75,935
Pay Stations	5,011	3,026		21,528		1,455		
Large PBX			25,021				8,113	4,818
Mobile Tower								
Pole Lines		221		7,487				
Aerial Cable								
Underground Cable			29,398	240,113		3,120		
Buried Cable	1,542,874	1,209,837	1,738,070	3,162,292	321,556	948,979	3,903,496	1,444,653
Submarine Cable								
Aerial Wire				1,932				
Underground Conduit			193,488	260,795		2,087		2,004
Fur. & Off. Equip.	85,572	44,909	119,541	622,719	13,926	42,402	203,104	8,060
Other Commun. Equip.	3,548	15,000				2,972		
Veh. and Other Equip.	277,422	13,458	258,135	156,889	98,460	138,475	369,950	79,921
Plant Under Const.		10,384		44,173				
Nebr. G. O. Investment								
Tel. Plant in Service	3,286,143	1,991,334	4,174,370	8,434,006	1,044,816	2,103,730	8,314,460	2,785,931
Material & Supplies	9,585	1,389	11,815	73,949	22,753	13,788	2,660	11,264
Total	3,295,728	1,992,723	4,186,185	8,507,955	1,067,569	2,117,518	8,317,120	2,797,195
Less: Deprec. Reserve	1,349,659	520,924	1,723,640	4,101,638	710,788	1,402,639	4,126,995	1,829,357
Def. Income Taxes	241,402	268,274	230,014	475,092	0	10,398	686,000	82,000
Rate Base	1,704,667	1,203,525	2,232,531	3,931,225	356,781	704,481	3,504,125	885,838
Net Operating Income	202,664	108,776	140,527	709,962	82,354	45,359	481,267	159,369
Return on Rate Base	11.88877%	9.03812%	6.29452%	18.05956%	23.08251%	6.43864%	13.73430%	17.99076%

Local Exchange Carriers
1987 Rate Base and Return

	(9)	(10)	(11)	(12)	(13)	(14)	(15)	(16)
	Cozad	Curtis	Dalton	Diller	Eastern Nebraska	Eustis	GTE North Nebraska Combined	Glenwood
Intangibles	316		1,826		4,253	84	16,099	1,600
Land	68,191	38,800	2,977	3,575	13,539	2,900	206,935	11,279
Buildings	360,360	308,106	183,598	139,384	588,062	27,935	2,150,015	335,362
C.O.E.	1,332,412	1,104,274	1,606,934	877,620	1,475,529	184,468	24,089,135	2,920,728
Station Apparatus	482,200	105,920	84,736	56,563			3,096,196	233,094
Station Connections	100,194	92,276	21,041	20,203	435,034	9,152	6,077,146	89,764
Pay Stations				4,759		1,600	347,547	
Large PBX	27,693						968,888	
Mobile Tower								
Pole Lines	4,776	29,105					1,524,462	8,785
Aerial Cable	37,496						6,292,454	
Underground Cable	232,760						2,335,204	
Buried Cable	1,663,214	1,065,541	1,938,607	1,260,992	2,968,178	343,396	20,477,146	3,102,792
Submarine Cable					11,790			
Aerial Wire	395						22,203	
Underground Conduit	282,756	6,279			433		987,953	
Fur. & Off. Equip.	46,168	57,405	17,434	19,242	127,390	585	124,489	192,601
Other Commun. Equip.					39,387		228,920	
Veh. and Other Equip.	188,600	188,553	143,287	181,698	58,187	33,982	2,273,726	140,980
Plant Under Const.	5,208	11,889	49,707		12,735		1,822,803	3,148
Nebr. G. O. Investment								
Tel. Plant in Service	4,832,739	3,008,148	4,050,147	2,564,036	5,734,517	604,102	73,041,321	7,040,133
Material & Supplies	9,169	25,871	15,757	11,633	0	1,535	29,747	10,418
Total	4,841,908	3,034,019	4,065,904	2,575,669	5,734,517	605,637	73,071,068	7,050,551
Less: Deprec. Reserve	2,575,866	1,296,005	1,088,646	1,135,187	2,562,047	290,990	29,652,492	3,022,988
Def. Income Taxes	366,709	0	82,949	147,825	303,585	24,357	6,107,072	0
Rate Base	1,899,333	1,738,014	2,894,309	1,292,657	2,868,885	290,290	37,311,504	4,027,563
Net Operating Income	282,892	121,965	330,762	35,360	314,650	73,361	3,740,620	111,991
Return on Rate Base	14.89428%	7.01749%	11.42801%	2.73545%	10.96768%	25.27162%	10.02538%	2.78061%

Local Exchange Carriers
1987 Rate Base and Return

	(17)	(18)	(19)	(20)	(21)	(22)	(23)	(24)
	Great Plains Comm.	Hamilton	Hartington	Hartman	Home	Hooper	K & M	Keystone- Arthur
Intangibles	86,138			2,668	1,365	6,743	48	
Land	270,655	23,564	13,942	2,800	1,479	2,966	5,379	13,100
Buildings	3,210,185	279,023	377,010	240,870	42,849	69,338	112,777	354,232
C.O.E.	16,951,888	3,288,766	868,178	582,974	333,571	327,882	467,810	760,702
Station Apparatus		1,096,868	108,338			49,419	68,406	2,916
Station Connections	1,747,283	577,491	84,068	22,130	19,716	32,089	35,675	1,688
Pay Stations	131,599		8,166	3,413	4,917	8,271		
Large PBX		33,721						
Mobile Tower	7479							
Pole Lines	162,788	13,738	4,807			2,263		
Aerial Cable	307,249	118,634	49,166			2,283		
Underground Cable		15,796	2,836					
Buried Cable	29,157,265	3,073,457	615,798	1,022,686	415,235	885,717	774,158	1,035,744
Submarine Cable								
Aerial Wire	13,466		376					
Underground Conduit			8,495					
Fur. & Off. Equip.	1,289,622	127,593	20,039	11,533	12,039	23,230	25,031	51,559
Other Commun. Equip.	156,103		6,020					
Veh. and Other Equip.	2,135,541	291,215	104,884	132,311	103,933	45,413	67,561	105,073
Plant Under Const.	106,531		59			183,119	2,241	
Nebr. G. O. Investment								
Tel. Plant in Service	55,733,792	8,939,866	2,272,182	2,021,385	935,104	1,638,733	1,559,086	2,325,014
Material & Supplies	216,639	0	25,309	13,636	3,896	7,831	3,257	26,680
Total	55,950,431	8,939,866	2,297,491	2,035,021	939,000	1,646,564	1,562,343	2,351,694
Less: Deprec. Reserve	22,985,478	4,342,910	874,969	775,697	409,260	776,284	1,123,048	716,926
Def. Income Taxes	4,891,551	932,600	13,728	33,215	52,360	66,250	5,872	50,339
Rate Base	28,073,402	3,664,356	1,408,794	1,226,109	477,380	804,030	433,423	1,584,429
Net Operating Income	3,514,332	817,615	239,783	74,774	83,503	187,481	44,002	137,531
Return on Rate Base	12.51837%	22.31265%	17.02044%	6.09848%	17.49194%	23.31766%	10.15221%	8.68016%

Local Exchange Carriers
1987 Rate Base and Return

	(25)	(26)	(27)	(28)	(29)	(30)	(31)	(32)
	L T & T	Nebraska Central	Northeast Nebraska	US West-Nebr Combined	Petersburg	Pierce	Plainview	Rock County
Intangibles					46	480		993
Land	2,225,592	33,053	19,685	5,866,060	3,636	49,327	2,793	6,501
Buildings	20,002,123	841,789	655,177	121,721,755	103,582	155,955	73,912	259,130
C.O.E.	151,859,805	2,257,997	3,739,781	319,212,234	604,863	623,195	455,198	948,929
Station Apparatus	18,035,891	194,845	210,807	992,486	1,194	121,933	97,513	
Station Connections	7,628,987	195,484	113,582	63,704,821	2,027	59,468	65,514	129,027
Pay Stations	1,829,700	45,948	22,222	3,381,070		6,156	5,133	3,506
Large PBX	3,801,463	-		6,863,612				
Mobile Tower								
Pole Lines	8,185,063	-		1,438,498		1,667		11,370
Aerial Cable	29,885,207	96,558		15,255,762				
Underground Cable	19,187,379	17,865		56,407,844				
Buried Cable	83,777,752	4,745,729	4,730,939	205,400,964	684,689	1,327,384	383,844	2,088,729
Submarine Cable				386,315				
Aerial Wire	291,127			86,505				
Underground Conduit	11,733,544	101,778		32,097,971		730		
Fur. & Off. Equip.	13,342,515	260,369	67,836	149,177,670	35,726	90,584	37,467	54,821
Other Commun. Equip.	2,348,619			19,168,816				69,031
Veh. and Other Equip.	6,797,134	303,571	246,115	15,083,411	46,610	206,526	120,801	25,203
Plant Under Const.	4,553,953	309,972	5,434	19,150,461				
Nebr. G. O. Investment								
Tel. Plant in Service	385,485,854	9,404,958	9,811,578	1,035,396,255	1,482,373	2,643,405	1,242,175	3,597,240
Material & Supplies	2,391,736	2,776	57,959	8,352,565	4,450	5,140	3,949	7,169
Total	387,877,590	9,407,734	9,869,537	1,043,748,820	1,486,823	2,648,545	1,246,124	3,604,409
Less: Deprec. Reserve	152,052,939	2,258,068	3,622,324	341,920,055	345,954	1,805,248	888,733	1,209,290
Def. Income Taxes	29,194,714	933,845	0	127,919,718	9,576	33,852	11,918	413,794
Rate Base	206,629,937	6,215,821	6,247,213	573,909,047	1,131,293	809,445	345,473	1,981,325
Net Operating Income	25,219,774	947,950	396,591	57,193,687	159,432	151,053	134,854	277,444
Return on Rate Base	12.20529%	15.25060%	6.34829%	9.96564%	14.09290%	18.66130%	39.03460%	14.00295%

Local Exchange Carriers
1987 Rate Base and Return

	(33)	(34)	(35)	(36)	(37)	(38)	
	Rodeo	Southeast Nebraska	Stanton	Three River	United Nebraska Combined	Wauneta	Total Nebraska Combined
Intangibles		13,226	4,914	1,658	17,522	1,611	178,854
Land	24,863	43,357	14,803	2,657	117,533	3,231	9,166,664
Buildings	323,520	958,448	273,666	334,991	1,764,231	158,322	158,384,455
C.O.E.	2,266,942	2,465,948	671,919	1,650,391	14,428,392	731,241	570,012,989
Station Apparatus	154,872	446,046	100,966	1,491	919,416	77,617	27,383,170
Station Connections	97,703	146,532	86,965	30,309	2,585,322	41,058	85,061,921
Pay Stations				6,315	157,143		5,998,485
Large PBX					282,455		12,015,784
Mobile Tower							
Pole Lines		89,681			815,889		12,300,600
Aerial Cable		32,044			3,268,583		55,345,436
Underground Cable		49,236	49,023		540,090	14,845	79,125,509
Buried Cable	2,740,432	6,487,879	1,329,439	2,765,247	11,119,715	1,672,511	413,326,936
Submarine Cable							398,105
Aerial Wire		26,016			109,262		551,282
Underground Conduit		77,079	94,860		187,644	104,016	46,141,912
Fur. & Off. Equip.	200,155	49,247	36,100	42,400	557,798	5,839	167,244,720
Other Commun. Equip.				4,056			22,042,472
Veh. and Other Equip.	118,317	349,359	101,919	137,235	788,062	146,588	32,058,505
Plant Under Const.					112,869		26,384,686
Nebr. G. O. Investment							0
Tel. Plant in Service	5,926,804	11,234,098	2,764,574	4,976,750	37,771,926	2,956,879	1,723,129,964
Material & Supplies	34,770	5,749	36,028	16,903	137,674	11,342	11,616,791
Total	5,961,574	11,239,847	2,800,602	4,993,653	37,909,600	2,968,221	1,734,746,755
Less: Deprec. Reserve	2,646,419	2,892,193	893,820	1,937,055	14,797,801	883,738	617,548,070
Def. Income Taxes	0	559,022	43,132	0	4,562,295	337,400	179,090,858
Rate Base	3,315,155	7,788,632	1,863,650	3,056,598	18,549,504	1,747,083	938,107,827
Net Operating Income	201,238	501,191	195,418	330,972	2,460,422	346,240	100,557,166
Return on Rate Base	6.07024%	6.43490%	10.48577%	10.82812%	13.26409%	19.81818%	10.71915%

LOCAL EXCHANGE RATES

The following graph shows the weighted average business and residence one party monthly rates for LT&T, US West and the 36 other local exchange carriers. The weighted average by access line for all 38 local exchange carriers for business one party is \$31.37 and for residence one party is \$12.02. The weighted average for the 33 companies serving fewer than 5,000 access lines is \$14.32 for business one party and \$8.59 for residence one party.

NEBRASKA LOCAL EXCHANGE CARRIERS

Weighted Average Local Rates (1/1/88)

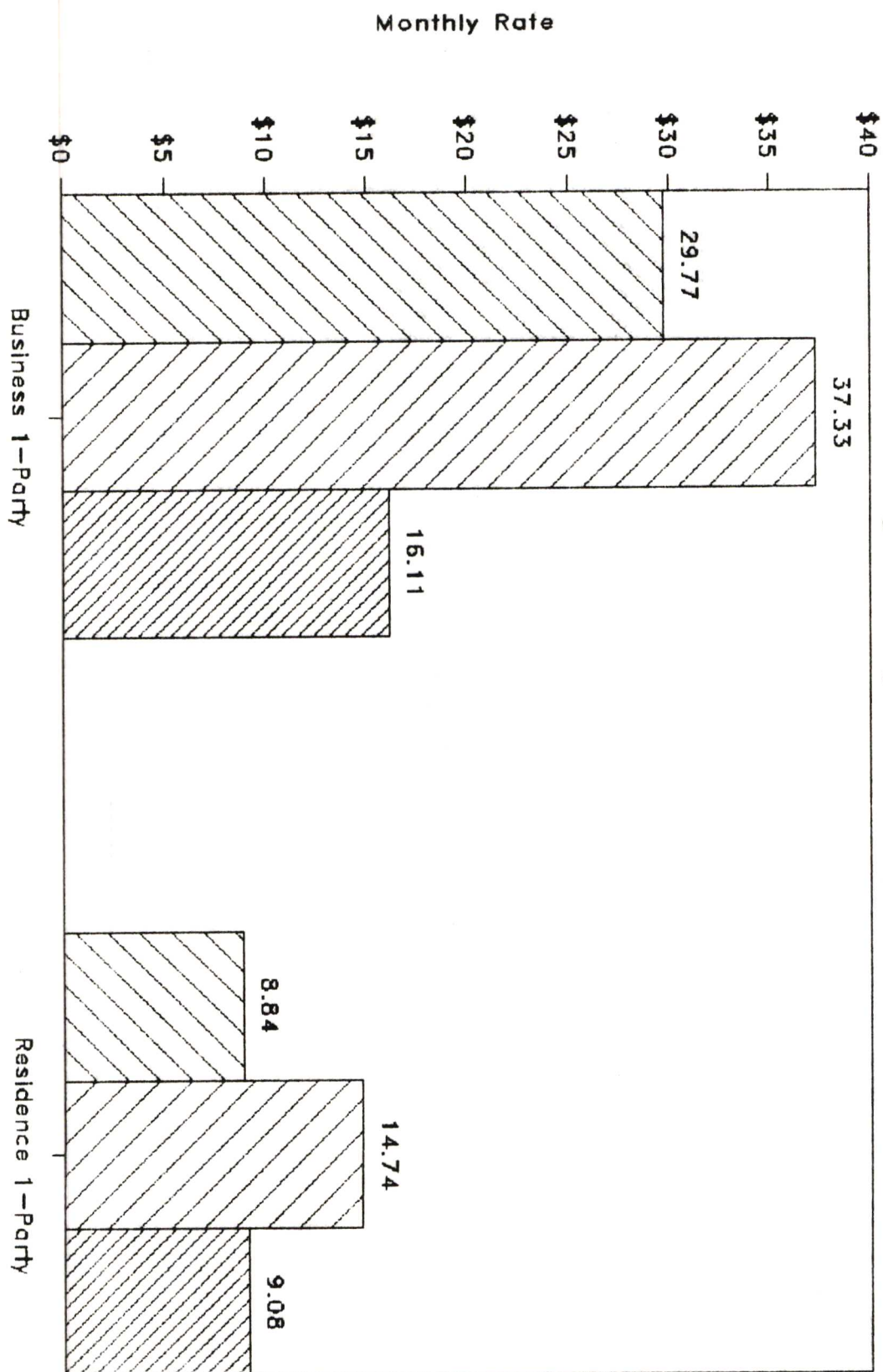


Table 11

NEBRASKA LOCAL EXCHANGE CARRIERS
Basic Local Exchange Rates (10/31/88)

COMPANY	EXCHANGE	B-1	B-2	R-1	R-2	R-4	RR-1	RB-1	S-S
=====									
Arapahoe Tel. Co.	Arapahoe	\$13.25		\$8.25					
	Hendley	13.25		8.25					
	Holbrook	13.25		8.25					
Arlington Tel. Co.	Arlington	12.80	11.75	8.60	7.50		*7.20	*8.60	
Benkelman Tel. Co.	Benkelman	10.50		7.50					
Blair Tel. Co.	Blair	20.80		10.15					
	Fort Calhoun	20.80		10.15					
	Kennard	20.80		10.15					
Cambridge Tel. Co.	Bartley	7.50		5.25					
	Cambridge	7.50		5.25					
Clarks Tel. Co.	Clarks	11.50		7.50					
	Staplehurst	12.50		9.00					
	Ulysses	11.50		7.50					
Consolidated Telco	Dickens	15.75		10.00					
	Madrid	9.75		7.50					
	Maywood	15.75		11.50					
	Paxton	9.75		7.50					
	Wallace	9.75		7.50					
	Wellfleet	15.75		11.50					
Consolidated Tel. Co.	Anselmo	6.50		4.00	3.50	2.75	12.00		
	Arthur	14.50		7.50			17.00		
	Brewster	6.50		4.00			12.00		
	Brownlee			17.00			17.00		
	Dunning	6.50		4.00	3.50		12.00		
	Halsey	6.50		4.00			12.00		
	Hyannis	6.25		5.25	4.25		17.00		1.25
	Merna	6.50		4.00			12.00		
	Mullen	6.50		4.00	3.50		17.00		1.25
	Purdom	6.50		4.00			7.00		
	Seneca	6.50		4.00	3.50	2.75	17.00		
	Thedford	6.50		4.00			17.00		1.25
Cozad Tel. Co.	Cozad	8.50		5.50	5.00				
Curtis Tel. Co.	Curtis	17.50		13.50					
Dalton Tel. Co.	Bushnell	11.50	10.50	10.00	9.00	8.00	**9.00		
	Dalton	7.00		5.00			**3.75	**5.75	
	Dix	11.50	10.50	10.00	9.00	8.00	**9.00		
	Gurley	7.00		5.00			**3.75	**5.75	
	Lodgepole	7.00		5.00			**3.75	**5.75	

NEBRASKA LOCAL EXCHANGE CARRIERS
Basic Local Exchange Rates (10/31/88)

COMPANY	EXCHANGE	B-1	B-2	R-1	R-2	R-4	RR-1	RB-1	S-S
Diller Tel. Co.	Diller	8.50		7.50					
	Harbine	8.50		7.50					
	Odell	8.50		7.50					
	Virginia	8.50		7.50					
Eastern Neb. Tel. Co.	Belden	16.95		10.95					
	Carroll	16.95		10.95					
	Meadow Grove	16.95		10.95					
	Osgood	16.95		10.95					
	Rosalie	16.95		10.95					
	Walthill	16.95		10.95					
	Winnebago	16.95		10.95					
	Nacy	16.95		10.95					
Eustis Tel. Exchange	Eustis	8.00		5.00	4.25		7.00		2.50
GTE North	Group I	13.49		7.48			**7.56		
	Group II	16.22		8.99			**9.09		
Glenwood Tel. Memb. Corp.	Bladen	12.00		8.00					
	Blue Hill	12.00		8.00					
	Campbell	12.00		8.00					
	Funk	13.50		13.50		11.50			
	Holstein	12.00		8.00					
	Lawrence	12.00		8.00					
	Norman	12.00		8.00					
	Roseland	12.00		8.00					
	Upland	12.00		8.00					
Great Plains Comm.	Archer	25.35		12.65					
	Arnold	12.00		9.00				12.00	
	Bancroft	25.35		12.65					
	Beemer	25.35		12.65					
	Bloomfield	13.60		10.35				13.60	
	Byron	25.35		12.65					
	Callaway	12.00		8.50				12.00	
	Center	12.00		8.50				12.00	
	Chapman	25.35		12.65					
	Chester/Hubbel/Reyno	26.35		13.65					
	Cotesfield	26.35		13.65					
	Creighton	13.60		10.35				13.60	
	Crofton	13.60		10.35				13.60	
	Deshler	25.35		12.65					
	Dodge	26.35		13.65					
	Elgin	13.60		10.35				13.60	
	Eving	13.00		9.75				13.00	
	Grant	13.00		9.75				13.00	
	Hay Springs	26.35		13.65					

NEBRASKA LOCAL EXCHANGE CARRIERS
Basic Local Exchange Rates (10/31/88)

COMPANY	EXCHANGE	B-1	B-2	R-1	R-2	R-4	RR-1	RB-1	S-S
Great Plains Comm.	Hayes Center	12.75		9.00				12.75	
	Herman	25.35		12.65					
	Huntley-Ragan	26.35		13.65					
	Imperial	13.00		9.75				13.00	
	Indianola	25.35		12.65					
	Kilgore	26.35		13.65					
	Merriman	26.35		13.65					
	Mirage Flats	26.35		13.65					
	Niobrara	12.60		9.10				12.60	
	North Bend	26.35		13.65					
	Oakdale	13.60		10.35				13.60	
	Oconto	10.00		6.75				10.00	
	Page	13.00		9.75				13.00	
	Palisade	12.75		9.00				12.75	
	Ponca	12.75		9.00				12.75	
	Red Cloud/Riverton	25.35		12.65					
	Riverton	25.35		12.65					
	St. Edward	12.75		9.00				12.75	
	Scribner	26.35		13.65					
	Snyder	26.35		13.65					
	Stapleton	12.00		8.50				12.00	
	Sutherland	12.75		9.00				12.75	
	Tryon	13.00		9.75				13.00	
	Vanango	12.00		8.50				12.00	
	Verdigre	12.75		9.00				12.75	
	Walnut	13.60		10.35				13.60	
	Wausa	12.75		9.00				12.75	
	Wilcox	26.35		13.65					
	Winnetoan	13.00		9.75				13.00	
	Wisner	25.35		12.65					
	Wolbach	26.35		13.65					
	Wood Lake	26.35		13.65					
	Wynot	25.35		12.65					
Hamilton Tel. Co.	Aurora	9.50		7.00					
	Doniphan	7.00		6.00					
	Giltner	7.00		6.00					
	Hampton	7.00		6.00					
	Hordville	7.00		6.00					
	Marquette	7.00		6.00					
	Phillips	7.00		6.00					
	Stockham	9.50		7.00					
Hartington Tel. Co.	Trumbull	7.00		6.00					
	Hartington	12.00		7.50					
Hartman Tel. Exchanges	Danbury	9.50		9.50					
	Haigler	9.50		9.50					
	Lebanon	9.50		9.50					

NEBRASKA LOCAL EXCHANGE CARRIERS
Basic Local Exchange Rates (10/31/88)

COMPANY	EXCHANGE	B-1	B-2	R-1	R-2	R-4	RR-1	RB-1	S-S
=====									
Home Tel. Co. of Neb.	Brady	7.25		4.50	4.00		*4.50	*6.25	
	Maxwell	7.25		4.50	4.00		*4.50	*6.25	1.50
Hooper Tel. Co.	Hooper	8.35	7.85	6.35	5.85				
	Uehling	8.35	7.85	6.35	5.85				
K & M Tel. Co.	Chambers	15.50		12.25					
	Inman	15.50		12.25					
Keystone-Arthur Tel. Co.	Keystone	14.50	13.00	11.50	10.00	11.50			
	Lemoyne	14.50	13.00	11.50	10.00	11.50			
Lincoln Tel. & Tel. Co.	Group A	17.55	13.95	6.85	6.05		9.90	20.25	
	Group B	22.05	17.60	7.70	6.85		10.50	25.45	
	Group C	24.05	19.25	8.05	7.15		10.60	27.70	
	Group D	26.50	21.20	8.50	7.60		10.90	30.25	
	Group E	28.10	22.75	8.95	8.05		11.10	32.10	
	Group F	33.00	27.85	9.35	8.45		11.50	37.70	
Neb. Central Tel. Co.	Ansley	19.00		10.75					
	Arcadia	16.25		9.25					
	Comstock	19.00		10.75					
	Gibbon	19.00		10.75					
	Sargent	19.00		10.75					
	Shelton	19.00		10.75					
Northeast Neb. Tel. Co.	Bartlett	7.75		5.25					
	Clearwater	7.75		5.25					
	Coleridge	7.75		5.25					
	Craig	8.00		6.25					
	Dixon	7.75		5.25					
	Jackson	7.75		5.25					
	Linwood/Morse Bluffs	9.25		6.25					
	Martinsburg	7.75		5.25					
	Newcastle	7.75		5.25					
	Obert	7.75		5.25					
	Prague	9.25		6.25					
	Weston	9.25		6.25					
Petersburg Tel. Co.	Petersburg	17.50		15.00					
Pierce Tel. Co., Inc.	Hoskins	16.10		11.10					
	Pierce	16.10		11.10					
Plainview Tel. Co.	Plainview	12.50		6.00			10.25	11.75	
Rock County Tel. Co.	Bassett	15.65		9.65	9.15		*8.65	*13.65	
	Newport	15.65		9.65	9.15		*8.65	*13.65	

NEBRASKA LOCAL EXCHANGE CARRIERS
Basic Local Exchange Rates (10/31/88)

COMPANY	EXCHANGE	B-1	B-2	R-1	R-2	R-4	RR-1	RB-1	S-S
Rodeo Tel., Inc.	Burwell	17.05		11.20					
	Erickson	17.05		11.20					
	North Loup	17.05		11.20					
	Scotia	17.05		11.20					
	Taylor	17.05		11.20					
	N. Burwell	17.05		11.20					
Southeast Neb. Tel. Co.	Falls City	27.50		10.50	9.75		**9.50		
	Tri-City	27.50		10.50	9.75		**9.50		
Stanton Tel. Co., Inc.	Stanton	17.50		14.50					
Three River Telco	Johnstown	13.25		9.00					
	Lynch	13.25		9.00					
	Naper	13.25		9.00					
	Springview	13.25		9.00					
	Verdel	13.25		9.00					
US West	Group A	37.55		14.90	12.90		20.65	43.30	
	Group B	36.40		14.10	12.10		19.85	42.15	
United Tel. Co. of the West	Group 1	16.87		8.44			**10.92		
	Group 2	17.60		8.80			**11.40		
	Group 3	20.40		10.20			**13.21		
Wauneta Tel. Co.	Wauneta	10.50		7.50					
GTE North Inc.:									
Group I	Albion, Alma, Amherst, Battle Creek, Beaver City, Bertrand, Bloomington, Brunswick, Duncan, Edison, Franklin, Genoa, Greeley, Heartwell, Hildreth, Leigh, Lindsay, Madison, Miller, Monroe, Naponee, Neligh, Newman Grove, Orchard, Ord, Orleans, Palmer, Platte Center, Pleasanton, Republican City, Riverdale, Stamford, Sumner, Tilden, Wilsonville,								
Group II	Columbus, Kearney								
The Lincoln Telephone & Telegraph Company:									
Group A	Adams, Burr, Davenport, Exeter, Guide Rock, Milligan, Nehavka, Tobias,								
Group B	Bellwood, Brainard, Brock, Brownville, Bruning, Bruno, Burchard, Carleton, Cedar Bluffs, Ceresco, Clatonia, Clay Center, Colon, Cook, Cordova, Crab Orchard, Dawson, Dewese, Edgar, Elk Creek, Elmwood, Fairfield, Fairmont, Friend, Grafton, Humboldt, Ithaca, Johnson, Louisville, Mead, Murdock, Nelson, Nemaha, Octavia, Ohioa, Ong, Osceola, Peru, Polk, Rising City, Ruskin, Shickley, Steinauer, Sterling, Stromsburg, Surprise, Swanton, Table Rock, Western, Wilber								
Group C	Alexandria, Ashland, Auburn, Avoca, Beaver Crossing, Benedict, Bradshaw, David City, Daykin, DeWitt, Dorchester, DuBois, Dunbar, Dwight, Filley, Garland, Geneva, Gresham, Hardy, Harvard, Hebron, Jansen, Julian, McCool, Otoe, Pawnee City, Plymouth, Shelby, Steele City, Superior, Syracuse, Talmage, Tamora, Tecumseh, Unadilla, Union, Waco, Wahoo, Weeping Water, Wymore, Yutan								

NEBRASKA LOCAL EXCHANGE CARRIERS
Basic Local Exchange Rates (10/31/88)

COMPANY	EXCHANGE	B-1	B-2	R-1	R-2	R-4	RR-1	RB-1	S-S
=====									
The Lincoln Telephone & Telegraph Company:									
Group D	Crete, Fairbury, Milford, Murray, Nebraska City, Plattsmouth, Seward, Sutton, Utica, York								
Group E	Barneston, Beatrice, Glenvil, Hansen, Hastings, Juniata, Kenesaw, Liberty								
Group F	Alvo-Eagle, Bennet, Cortland, Davey, Denton, Douglas, Firth, Greenwood, Hallam, Hickman, Lincoln, Malcolm, Martell, Palmyra, Panama, Pleasant Dale, Raymond, Valparaiso, Waverly								
US West Telephone Company:									
Group A	Allen, Bennington, Chadron, Creston, Dakota City, Elkhorn, Fremont, Grand Island, Gretna, Humphrey, Laurel, Norfolk, North Platte, Omaha, Pilger, South Sioux City, Springfield, Valley, Wakefield, Waterbury, Waterloo, Winside								
Group B	Ainsworth, Alliance, Ashton, Atkinson, Atlanta, Axtell, Belgrade, Big Springs, Boelus, Bridgeport, Bristow, Broken Bow, Brule, Butte, Cairo, Cedar Rapids, Central City, Clarkson, Cody, Crawford, Crookston, Culbertson, Dannebrog, Decatur, Elba, Elm Creek, Elwood, Emerson, Farnam, Farwell, Fullerton, Gordon, Gothenburg, Harrison, Holdrege, Homer, Howells, Lexington, Litchfield, Long Pine, Loomis, Loup City, Lyons, McCook, Mason City, Minden, Oakland, Ogallala, O'Neill, Overton, Oxford, Pender, Primrose, Randolph, Ravenna, Rockville, Rushville, St. Libory, St. Paul, Schuyler, Sidney, Silver Creek, Spalding, Spencer, Stratton, Stuart, Tekamah, Trenton, Valentine, Wayne, West Point, Whitney, Wood River								
United Telephone Company of the West:									
Group 1	Bayard, Broadwater, Chappell, Levellen, Lyman, Minatare, Mitchell, Morrill, Oshkosh, Potter								
Group 2	Kimball								
Group 3	Gering, Scottsbluff								

* Multi-party, ** 4-party

EAS RATE-ACCESS LINE DATA

Table 12 depicts EAS, Rate, and Access Line Data as submitted by the companies annually on the service and rate questionnaire for each exchange.

As mentioned earlier in the report, extended area service (EAS) is a service permitting subscribers in one exchange to place and/or receive two-way switched telecommunications to and from subscribers in one or more other exchanges without an interexchange toll charge.

The rates shown on this table do not include an EAS adder for the service where an adder applies.

1/1/88

Table 12

EAS-RATE-ACCESS LINE DATA

EXCHANGE	COMPANY	EAS		RATES		ACCESS LINES					TOTAL
		TO	FROM	B-1	R-1	BUS.	RES.	COIN	OTHER	COMPANY	
ADAMS	LT&T	0	0	17.55	6.85	40	321	2	0	3	366
AINSWORTH	NWB	1	1	36.40	14.10	294	1,219	19	21	18	1,571
ALBION	GTE	1	1	13.49	7.48	331	1,253	15	0	35	1,634
ALEXANDRIA	LT&T	2	0	24.05	8.05	9	167	1	0	1	178
ALLEN-WATERBURY	NWB	1	1	37.55	14.90	33	255	5	0	6	299
ALLIANCE	NWB	1	1	36.40	14.10	842	4,523	56	85	36	5,542
ALMA	GTE	3	3	13.49	7.48	182	631	12	0	24	849
AMHERST	GTE	2	2	13.49	7.48	16	263	1	0	13	293
ANSELMO	CONSOLIDATED	1	1	6.50	4.00	11	193	2	0	2	208
ANSLEY	NEBRASKA CENTRAL	1	1	19.00	10.75	46	464	3	0	5	518
ARAPAHOE	ARAPAHOE	2	2	13.25	8.25	122	590	3	6	20	741
ARCADIA	NEBRASKA CENTRAL	0	0	16.25	9.25	45	301	2	0	3	351
ARCHER	GREAT PLAINS	3	3	25.35	12.65	7	91	0	0	4	102
ARLINGTON	ARLINGTON	1	1	12.80	8.60	107	776	7	2	11	903
ARNOLD	GREAT PLAINS	0	0	12.00	9.00	106	511	5	0	10	632
ARTHUR	CONSOLIDATED	0	0	14.50	7.50	30	190	4	0	1	225
ASHLAND	LT&T	0	0	24.05	8.05	211	1,635	48	0	9	1,903
ASHTON	NWB	1	1	36.40	14.10	24	182	1	0	8	215
ATKINSON	NWB	2	2	36.40	14.10	193	1,051	9	10	12	1,275
ATLANTA	NWB	1	1	36.40	14.10	14	96	0	0	3	113
AUBURN	LT&T	0	5	24.05	8.05	375	1,842	28	15	9	2,269
AURORA	HAMILTON	0	0	9.50	7.00	525	1,881	29	92	184	2,711
AVOCA	LT&T	2	2	24.05	8.05	14	194	1	0	5	214
AXTELL	NWB	2	2	36.40	14.10	60	345	3	11	3	422
BANCROFT	GREAT PLAINS	0	0	25.35	12.65	65	391	2	0	2	460
BARNESTON	LT&T	3	3	28.10	8.95	10	150	3	0	2	165
BARTLETT	NORTHEAST NEBRASKA	0	0	7.75	5.25	31	105	5	5	2	148
BARTLEY	CAMBRIDGE	1	1	7.50	5.25	36	210	1	0	2	249
BASSETT	ROCK COUNTY	1	1	15.65	9.65	194	584	6	3	11	798
BATTLE CREEK	GTE	2	2	13.49	7.48	86	630	2	0	18	736
BAYARD	UNITED	6	6	16.87	8.44	105	818	3	0	14	940
BEATRICE	LT&T	2	6	28.10	8.95	1,162	5,975	111	14	36	7,298
BEAVER CITY	GTE	0	0	13.49	7.48	82	405	3	0	14	504
BEAVER CROSSING	LT&T	1	0	24.05	8.05	13	315	2	0	4	334
BEEMER	GREAT PLAINS	1	1	25.35	12.65	98	418	5	0	3	524
BELDEN	EASTERN NEBRASKA	0	0	16.95	10.95	17	102	1	0	3	123
BELGRADE	NWB	2	2	36.40	14.10	11	143	2	0	1	157
BELLEVUE	NWB	6	6	(SEE OMAHA)							
BELLWOOD	LT&T	1	0	22.05	7.70	27	339	4	0	2	372
BENEDICT	LT&T	1	0	24.05	8.05	15	213	1	0	2	231
BENKELMAN	BENKELMAN	0	0	10.50	7.50	197	923	6	0	10	1,136
BENNET	LT&T	19	19	33.00	9.35	35	504	5	0	0	544
BENNINGTON	NWB	6	6	37.55	14.90	79	690	4	0	10	783
BERTRAND	GTE	1	1	13.49	7.48	81	511	3	0	16	611
BIG SPRINGS	NWB	1	1	36.40	14.10	58	349	21	6	6	440
BLAIR	BLAIR	3	3	20.80	10.15	845	3,180	31	92	69	4,217
BLOOMFIELD	GREAT PLAINS	0	0	13.60	10.35	181	917	3	0	6	1,107
BLOOMINGTON	GTE	2	2	13.49	7.48	9	137	2	0	11	159
BLUE HILL	GLENWOOD	1	1	12.00	8.00	258	1,945	12	7	73	2,295

1/1/88

EAS-RATE-ACCESS LINE DATA

EXCHANGE	COMPANY	EAS		RATES		ACCESS LINES					TOTAL
		TO	FROM	B-1	R-1	BUS.	RES.	COIN	OTHER	COMPANY	
BOELUS	NWB	3	3	36.40	14.10	19	158	1	0	5	183
BRADSHAW	LT&T	1	0	24.05	8.05	22	206	4	0	2	234
BRADY	HOME	0	0	7.25	4.50	36	379	2	0	5	422
BRAINARD	LT&T	1	1	22.05	7.70	34	337	6	0	2	379
BREWSTER	CONSOLIDATED	3	3	6.50	4.00	13	91	2	0	2	108
BRIDGEPORT	NWB	0	0	36.40	14.10	248	1,007	15	13	18	1,301
BRISTOW	NWB	3	3	36.40	14.10	12	103	0	0	2	117
BROADWATER	UNITED	0	0	16.87	8.44	26	158	1	0	9	194
BROCK	LT&T	1	0	22.05	7.70	11	129	1	0	3	144
BROKEN BOW	NWB	0	0	36.40	14.10	524	2,063	25	41	15	2,668
BROWNLEE	CONSOLIDATED	4	4	NONE	17.00	0	83	0	0	1	84
BROWNVILLE	LT&T	1	0	22.05	7.70	53	112	5	0	2	172
BRULE	NWB	2	2	36.40	14.10	51	275	5	0	6	337
BRUNING	LT&T	1	0	22.05	7.70	40	252	3	0	1	296
BRUNO	LT&T	1	0	22.05	7.70	10	210	3	0	2	225
BRUNSWICK	GTE	2	2	13.49	7.48	28	210	2	0	11	251
BURCHARD	LT&T	1	0	22.05	7.70	15	162	1	0	2	180
BURR	LT&T	0	0	17.55	6.85	13	109	1	0	2	125
BURWELL	RODEO	4	4	17.05	11.20	221	915	17	21	20	1,194
BUSHNELL	DALTON	0	0	11.50	10.00	26	156	1	1	9	193
BUTTE	NWB	3	3	36.40	14.10	54	310	2	0	6	372
BYRON	GREAT PLAINS	1	1	25.35	12.65	23	188	1	0	6	218
CAIRO	NWB	2	2	36.40	14.10	51	473	5	0	7	536
CALLAWAY	GREAT PLAINS	0	0	12.00	8.50	83	423	2	0	4	512
CAMBRIDGE	CAMBRIDGE	1	1	7.50	5.25	163	722	9	0	10	904
CARLETON	LT&T	1	0	22.05	7.70	14	106	2	0	0	122
CARROLL	EASTERN NEBRASKA	0	0	16.95	10.95	26	257	1	0	4	288
CEDAR BLUFFS	LT&T	1	0	22.05	7.70	32	419	5	0	1	457
CEDAR RAPIDS-PRIMROSE	NWB	2	2	36.40	14.10	45	295	3	0	9	352
CENTER	GREAT PLAINS	0	0	12.00	8.50	41	85	2	0	3	131
CENTRAL CITY	NWB	2	2	36.40	14.10	302	1,499	23	15	13	1,852
CERESCO	LT&T	20	19	22.05	7.70	44	421	5	0	2	472
CHADRON	NWB	2	2	37.55	14.90	527	2,572	46	97	30	3,272
CHAMBERS	K&M	2	2	15.50	12.25	56	385	4	0	7	452
CHAPMAN	GREAT PLAINS	2	2	25.35	12.65	28	262	3	0	7	300
CHAPPELL	UNITED	0	0	16.87	8.44	147	597	6	0	10	760
CHESTER-HUBBELL-REYNOLDS	GREAT PLAINS	0	0	26.35	13.65	59	373	7	0	12	451
CLARKS	CLARKS	0	0	13.50	9.50	57	381	3	7	21	469
CLARKSON	NWB	0	0	36.40	14.10	74	556	1	0	7	638
CLATONIA	LT&T	1	1	22.05	7.70	17	174	2	0	3	196
CLAY CENTER	LT&T	0	5	22.05	7.70	113	434	5	0	3	555
CLEARWATER	NORTHEAST NEBRASKA	0	0	7.75	5.25	41	403	0	4	3	451
CODY	NWB	0	0	36.40	14.10	31	169	2	0	7	209
COLERIDGE	NORTHEAST NEBRASKA	0	0	7.75	5.25	55	441	3	4	4	507
COLON	LT&T	1	0	22.05	7.70	4	135	1	0	1	141
COLUMBUS	GTE	3	3	16.22	8.99	2,212	8,520	113	0	178	11,023
CONSTOCK	NEBRASKA CENTRAL	1	1	19.00	10.75	8	143	1	0	3	155
COOK	LT&T	1	0	22.05	7.70	33	297	1	0	3	334
CORDOVA	LT&T	1	0	22.05	7.70	13	116	3	0	4	136

1/1/88

EAS-RATE-ACCESS LINE DATA

EXCHANGE	COMPANY	EAS		RATES		ACCESS LINES					TOTAL
		TO	FROM	B-1	R-1	BUS.	RES.	COIN	OTHER	COMPANY	
CORTLAND	LT&T	19	19	33.00	9.35	14	343	3	0	0	360
COTESFIELD	GREAT PLAINS	2	2	26.35	13.65	6	78	1	0	4	89
COZAD	COZAD	0	0	8.50	5.50	482	1,984	15	9	12	2,502
CRAB ORCHARD	LT&T	1	0	22.05	7.70	5	82	1	0	2	90
CRAIG	NORTHEAST NEBRASKA	0	0	8.00	6.25	18	278	3	0	2	301
CRAWFORD	NWB	3	3	36.40	14.10	130	820	16	10	14	990
CREIGHTON	GREAT PLAINS	1	1	13.60	10.35	135	790	6	5	9	945
CRESTON	NWB	1	1	37.55	14.90	20	246	0	0	1	267
CRETE	LT&T	0	1	26.50	8.50	407	2,277	57	0	13	2,754
CROFTON	GREAT PLAINS	0	0	13.60	10.35	106	722	9	0	5	842
CROOKSTON	NWB	1	1	36.40	14.10	12	127	0	0	5	144
CULBERTSON	NWB	1	1	36.40	14.10	57	519	4	0	4	584
CURTIS	CURTIS	1	1	17.50	13.50	132	558	6	29	12	737
DAKOTA CITY	NWB	2	2	37.55	14.90	76	686	8	36	3	809
DALTON	DALTON	0	0	7.00	5.00	53	271	3	7	5	339
DANBURY	HARTMAN	1	1	NONE	9.50	0	163	1	0	5	169
DANNEBROG	NWB	3	3	36.40	14.10	32	286	2	0	3	323
DAVENPORT	LT&T	0	0	17.55	6.85	45	302	2	0	1	350
DAVEY	LT&T	19	19	33.00	9.35	16	342	2	0	0	360
DAVID CITY	LT&T	1	6	24.05	8.05	264	1,342	37	8	12	1,663
DAWSON	LT&T	1	0	22.05	7.70	20	179	3	0	2	204
DAYKIN	LT&T	1	0	24.05	8.05	19	207	2	0	2	230
DECATUR	NWB	2	2	36.40	14.10	39	334	2	0	6	381
DENTON	LT&T	19	19	33.00	9.35	10	291	4	0	0	305
DESHLER	GREAT PLAINS	1	1	25.35	12.65	91	552	2	0	6	651
DEWESEE	LT&T	2	0	22.05	7.70	6	120	3	0	1	130
DEWITT	LT&T	2	1	24.05	8.05	46	395	5	0	3	449
DILLER	DILLER	2	2	8.50	7.50	14	278	3	0	4	299
DIX	DALTON	0	0	11.50	10.00	36	132	1	2	7	178
DIXON	NORTHEAST NEBRASKA	0	0	7.75	5.25	28	264	2	1	2	297
DODGE	GREAT PLAINS	3	3	26.35	13.65	86	487	3	0	6	582
DONIPHAN	HAMILTON	0	0	7.00	6.00	69	461	5	51	91	677
DORCHESTER	LT&T	1	0	24.05	8.05	27	379	3	0	4	413
DOUGLAS	LT&T	1	1	17.55	6.85	14	152	2	0	0	168
DUBOIS	LT&T	1	1	24.05	8.05	15	184	1	0	2	202
DUNBAR	LT&T	1	1	24.05	8.05	13	248	3	0	1	265
DUNCAN	GTE	1	1	13.49	7.48	28	281	3	0	17	329
DUNNING	CONSOLIDATED	3	3	6.50	4.00	18	156	5	2	6	187
DWIGHT	LT&T	2	1	24.05	8.05	13	147	2	0	4	166
EAGLE	LT&T	19	19	33.00	9.35	39	674	7	0	1	721
EDGAR	LT&T	1	0	22.05	7.70	55	322	4	0	2	383
EDISON	GTE	1	1	13.49	7.48	18	133	1	0	10	162
ELBA	NWB	3	3	36.40	14.10	21	129	1	0	3	154
ELGIN	GREAT PLAINS	1	1	13.60	10.35	118	633	5	0	9	765
ELK CREEK	LT&T	1	0	22.05	7.70	12	137	0	0	1	150
ELKHORN	NWB	6	6	37.55	14.90	295	2,361	29	35	21	2,741
ELM CREEK	NWB	2	2	36.40	14.10	79	539	12	0	8	638
ELMWOOD	LT&T	1	1	22.05	7.70	43	409	1	0	3	456
ELWOOD	NWB	1	1	36.40	14.10	121	854	8	0	9	992

1/1/88

EAS-RATE-ACCESS LINE DATA

EXCHANGE	COMPANY	EAS		RATES		ACCESS LINES				COMPANY	TOTAL
		TO	FROM	B-1	R-1	BUS.	RES.	COIN	OTHER		
EMERSON	NWB	0	0	36.40	14.10	70	517	4	0	8	599
ERICSON	RODEO	2	2	17.05	11.20	25	163	3	0	1	192
EUSTIS	EUSTIS	0	0	8.00	5.00	53	383	1	0	4	441
EWING	GREAT PLAINS	2	2	13.00	9.75	59	287	3	0	4	353
EXETER	LT&T	0	1	17.55	6.85	52	385	3	0	2	442
FAIRBURY	LT&T	0	4	26.50	8.50	456	2,506	35	13	16	3,026
FAIRFIELD	LT&T	1	1	22.05	7.70	42	272	1	0	9	324
FAIRMONT	LT&T	1	0	22.05	7.70	56	365	5	0	1	427
FALLS CITY	SOUTHEAST NEBRASKA	1	1	27.50	10.50	528	2,622	17	58	23	3,248
FARNAM	NWB	0	0	36.40	14.10	24	170	1	0	3	198
FARWELL	NWB	3	3	36.40	14.10	17	130	1	0	4	152
FILLEY	LT&T	1	0	24.05	8.05	13	172	2	0	1	188
FIRTH	LT&T	19	19	33.00	9.35	37	337	5	0	0	379
FORT CALHOUN	BLAIR	2	2	20.80	10.15	82	514	4	0	8	608
FRANKLIN	GTE	3	3	13.49	7.48	155	655	10	0	19	839
FREMONT	NWB	0	0	37.55	14.90	2,077	11,117	212	221	60	13,687
FRIEND	LT&T	0	0	22.05	7.70	91	610	10	0	4	715
FULLERTON	NWB	1	1	36.40	14.10	149	795	11	0	9	964
FUNK	GLENWOOD	3	3	13.50	10.00	23	249	1	0	12	285
GARLAND	LT&T	1	0	24.05	8.05	7	192	3	0	2	204
GENEVA	LT&T	0	4	24.05	8.05	324	1,233	22	12	10	1,601
GENOA	GTE	1	1	13.49	7.48	95	581	7	0	12	695
GERING	UNITED	6	6	20.40	10.20	623	3,365	14	0	14	4,016
GIBBON	NEBRASKA CENTRAL	1	1	19.00	10.75	147	861	11	0	11	1,030
GILTNER	HAMILTON	0	0	7.00	6.00	39	253	1	2	17	312
GLENVIL	LT&T	1	1	28.10	8.95	24	277	1	0	14	316
GORDON	NWB	1	1	36.40	14.10	296	1,375	20	26	27	1,744
GOTHENBURG	NWB	0	0	36.40	14.10	326	1,677	19	32	15	2,069
GRAFTON	LT&T	1	0	22.05	7.70	16	115	2	0	2	135
GRAND ISLAND	NWB	6	6	37.55	14.90	3,568	16,215	327	2,383	71	22,564
GRANT	GREAT PLAINS	0	0	13.00	9.75	235	735	8	0	10	988
GREELEY	GTE	3	3	13.49	7.48	65	294	2	0	19	380
GREENWOOD	LT&T	19	19	33.00	9.35	19	273	3	0	0	295
GRESHAM	LT&T	1	1	24.05	8.05	21	223	2	0	1	247
GREYNA	NWB	6	6	37.55	14.90	151	1,306	20	21	6	1,504
GUIDE ROCK	LT&T	0	0	17.55	6.85	30	249	1	0	1	281
GURLEY	DALTON	0	0	7.00	5.00	43	143	4	3	4	197
HAIGLER	HARTMAN	0	0	NONE	9.50	0	192	1	0	2	195
HALLAM	LT&T	19	19	33.00	9.35	15	198	1	0	0	214
HALSEY	CONSOLIDATED	5	5	6.50	4.00	25	74	3	0	1	103
HAMPTON	HAMILTON	0	0	7.00	6.00	46	292	2	5	21	366
HANSEN	LT&T	5	5	28.10	8.95	25	256	0	0	2	283
HARBINE	DILLER	2	2	8.50	7.50	3	115	1	0	2	121
HARDY	LT&T	1	1	24.05	8.05	21	149	2	0	1	173
HARRISON	NWB	2	2	36.40	14.10	62	284	5	0	8	359
HARTINGTON	HARTINGTON	0	0	12.00	7.50	253	1,079	7	0	0	1,339
HARVARD	LT&T	1	0	24.05	8.05	52	487	3	0	5	547
HASTINGS	LT&T	4	4	28.10	8.95	2,271	9,967	186	21	92	12,537
HAY SPRINGS	GREAT PLAINS	1	1	26.35	13.65	78	472	3	0	6	559

1/1/88

EAS-RATE-ACCESS LINE DATA

EXCHANGE	COMPANY	EAS		RATES		ACCESS LINES					TOTAL
		TO	FROM	B-1	R-1	BUS.	RES.	COIN	OTHER	COMPANY	
HAYES CENTER	GREAT PLAINS	1	1	12.75	9.00	50	251	3	1	2	307
HEARTWELL	GTE	1	1	13.49	7.48	15	87	1	0	9	112
HEBRON	LT&T	0	3	24.05	8.05	238	1,001	17	0	7	1,263
HENDLEY	ARAPAHOE	2	2	13.25	8.25	5	53	1	0	1	60
HERMAN	GREAT PLAINS	1	1	25.35	12.65	32	334	2	0	3	371
HICKMAN	LT&T	19	19	33.00	9.35	55	668	4	0	0	727
HILDRETH	GTE	1	1	13.49	7.48	40	306	2	0	19	367
HOLBROOK	ARAPAHOE	2	2	13.25	8.25	20	194	1	0	3	218
HOLDREGE	NWB	3	3	36.40	14.10	681	2,756	32	50	26	3,545
HOMER	NWB	2	2	36.40	14.10	40	329	3	0	13	385
HOOPER	HOOPER	1	1	8.35	6.35	135	721	12	0	6	874
HORDVILLE	HAMILTON	0	0	7.00	6.00	17	117	1	1	5	141
HOSKINS	PIERCE	1	1	16.10	11.10	30	303	3	0	3	339
HOWELLS	NWB	0	0	36.40	14.10	68	531	2	0	9	610
HUBBELL	GREAT PLAINS	0	0	(SEE CHESTER)							
HUMBOLDT	LT&T	0	1	22.05	7.70	119	716	7	0	4	846
HUMPHREY	NWB	2	2	37.55	14.90	92	605	6	5	7	715
HYANNIS	CONSOLIDATED	0	0	6.25	5.25	47	505	10	7	3	572
IMPERIAL	GREAT PLAINS	0	0	13.00	9.75	374	1,278	11	0	7	1,670
INDIANOLA	GREAT PLAINS	0	0	25.35	12.65	73	460	3	0	4	540
INMAN	K&M	2	2	15.50	12.25	10	155	0	0	2	167
ITHACA	LT&T	1	0	22.05	7.70	11	125	1	0	1	138
JACKSON	NORTHEAST NEBRASKA	0	0	7.75	5.25	39	389	4	3	10	445
JANSEN	LT&T	1	0	24.05	8.05	16	137	3	0	1	157
JOHNSON	LT&T	1	0	22.05	7.70	32	324	3	0	2	361
JOHNSTOWN	THREE RIVER	0	0	13.25	9.00	13	109	0	0	2	124
JULIAN	LT&T	1	0	24.05	8.05	2	78	1	0	2	83
JUNIATA	LT&T	4	4	28.10	8.95	48	479	2	0	10	539
KEARNEY	GTE	4	4	16.22	8.99	2,836	10,888	170	0	185	14,079
KENESAW	LT&T	4	4	28.10	8.95	49	395	6	0	8	458
KENNARD	BLAIR	3	3	20.80	10.15	26	264	1	0	3	294
KEYSTONE	KEYSTONE-ARTHUR	1	1	15.00	12.00	31	137	6	16	11	201
KILGORE	GREAT PLAINS	0	0	26.35	13.65	7	76	1	0	5	89
KIMBALL	UNITED	0	0	17.60	8.80	503	1,480	23	0	12	2,018
LAUREL	NWB	0	0	37.55	14.90	112	625	9	0	5	751
LEBANON	HARTMAN	1	1	NONE	9.50	0	79	1	0	1	81
LEIGH	GTE	0	0	13.49	7.48	61	432	3	0	17	513
LEMOYNE	KEYSTONE-ARTHUR	1	1	15.00	12.00	21	297	8	0	10	336
LEWELLEN	UNITED	1	1	16.87	8.44	47	291	1	0	8	347
LEXINGTON	NWB	2	2	36.40	14.10	741	3,192	47	101	31	4,112
LIBERTY	LT&T	3	3	28.10	8.95	9	133	2	0	2	146
LINCOLN 15&M STREET	LT&T	19	19	33.00	9.35	4,472	8,240	629	11,203	12	24,556
LINCOLN 15&M STREET	LT&T	19	19	33.00	9.35						
LINCOLN 15&M STREET	LT&T	19	19	33.00	9.35	4,079	19,246	248	340	467	24,380
LINCOLN 15&M STREET	LT&T	19	19	33.00	9.35						
LINCOLN 15&M STREET	LT&T	19	19	33.00	9.35						
LINCOLN 27&OLD CHENEY	LT&T	19	19	33.00	9.35	1,085	9,546	67	0	24	10,722
LINCOLN 48&SOUTH	LT&T	19	19	33.00	9.35	3,131	20,808	186	0	0	24,125
LINCOLN 49&WALKER	LT&T	19	19	33.00	9.35	3,915	17,519	336	6	10	21,786

1/1/88

EAS-RATE-ACCESS LINE DATA

EXCHANGE	COMPANY	EAS		RATES		ACCESS LINES					TOTAL
		TO	FROM	B-1	R-1	BUS.	RES.	COIN	OTHER	COMPANY	
LINCOLN AIR PARK	LT&T	19	19	33.00	9.35	72	1,241	36	0	0	1,349
LINDSAY	GTE	2	2	13.49	7.48	69	277	3	0	18	367
LINWOOD-MORSE BLUFFS	NORTHEAST NEBRASKA	2	2	9.25	6.25	19	280	3	2	2	306
LITCHFIELD	NWB	0	0	36.40	14.10	27	238	1	0	5	271
LODGEPOLE	DALTON	0	0	7.00	5.00	49	279	4	2	2	336
LONG PINE	NWB	1	1	36.40	14.10	34	283	3	1	4	325
LOOMIS	NWB	2	2	36.40	14.10	45	287	3	0	3	338
LOUISVILLE	LT&T	0	0	22.05	7.70	80	863	19	0	5	967
LOUP CITY	NWB	1	1	36.40	14.10	143	775	14	4	8	944
LYMAN	UNITED	6	6	16.87	8.44	50	235	1	0	7	293
LYNCH	THREE RIVER	0	0	13.25	9.00	43	262	2	0	5	312
LYONS	NWB	3	3	36.40	14.10	129	703	4	0	10	846
MACY	EASTERN NEBRASKA	3	3	16.95	10.95	60	77	1	0	1	139
MADISON	GTE	0	0	13.49	7.48	206	1,039	15	0	29	1,289
MADRID	CONSOLIDATED TELCO	0	0	9.75	7.50	40	181	2	1	3	227
MALCOLM	LT&T	19	19	33.00	9.35	9	406	4	0	1	420
MARQUETTE	HAMILTON	0	0	7.00	6.00	22	267	1	1	12	303
MARTELL	LT&T	19	19	33.00	9.35	21	284	4	0	0	309
MARTINSBURG	NORTHEAST NEBRASKA	2	2	7.75	5.25	4	83	1	0	1	89
MASON CITY	NWB	1	1	36.40	14.10	20	171	1	0	5	197
MAXWELL	HOME	0	0	7.25	4.50	42	258	3	0	4	307
MAYWOOD	CONSOLIDATED TELCO	2	2	15.75	11.50	34	249	1	1	2	287
McCOOK	NWB	1	1	36.40	14.10	1,001	3,872	54	101	30	5,058
McCOOL	LT&T	1	0	24.05	8.05	46	327	2	0	2	377
MEAD	LT&T	1	1	22.05	7.70	49	286	6	0	2	343
MEADOW GROVE	EASTERN NEBRASKA	2	2	19.55	12.65	33	295	2	0	4	334
MERNA	CONSOLIDATED	1	1	6.50	4.00	30	289	3	2	1	325
MERRIMAN	GREAT PLAINS	0	0	26.35	13.65	21	131	2	0	2	156
MILFORD	LT&T	1	0	26.50	8.50	120	1,059	25	0	8	1,212
MILLER	GTE	2	2	13.49	7.48	12	121	2	0	11	146
MILLIGAN	LT&T	0	0	17.55	6.85	37	258	2	0	2	299
MINATARE	UNITED	6	6	16.87	8.44	102	963	7	0	14	1,086
MINDEN	NWB	3	3	36.40	14.10	291	1,488	20	23	16	1,838
MIRAGE FLATS	GREAT PLAINS	1	1	26.35	13.65	7	141	0	0	5	153
MITCHELL	UNITED	6	6	16.87	8.44	179	1,230	3	0	14	1,426
MONROE	GTE	3	3	13.49	7.48	39	231	1	0	13	284
MORRILL	UNITED	6	6	16.87	8.44	164	891	5	0	6	1,066
MULLEN	CONSOLIDATED	0	0	6.50	4.00	86	404	4	8	4	506
MURDOCK	LT&T	1	1	22.05	7.70	17	251	2	0	5	275
MURRAY	LT&T	1	0	26.50	8.50	42	635	7	0	7	691
NAPER	THREE RIVER	0	0	13.25	9.00	21	212	1	0	2	236
NAPONEE	GTE	2	2	13.49	7.48	12	110	1	0	11	134
NEBRASKA CITY	LT&T	0	5	26.50	8.50	665	3,159	65	13	30	3,932
NEHAWKA	LT&T	0	0	17.55	6.85	24	197	5	0	2	228
NELIGH	GTE	2	2	13.49	7.48	289	918	15	0	29	1,251
NELSON	LT&T	0	1	22.05	7.70	71	505	6	0	2	584
NEMAHA	LT&T	1	0	22.05	7.70	9	127	1	0	2	139
NEWCASTLE	NORTHEAST NEBRASKA	2	2	7.75	5.25	31	302	0	3	5	341
NEWMAN GROVE	GTE	2	2	13.49	7.48	91	560	2	0	20	673

1/1/88

EAS-RATE-ACCESS LINE DATA

EXCHANGE	COMPANY	EAS		RATES		ACCESS LINES				COMPANY	TOTAL
		TO	FROM	B-1	R-1	BUS.	RES.	COIN	OTHER		
NEWPORT	ROCK COUNTY	1	1	15.65	9.65	14	188	1	0	9	212
NIOBRARA	GREAT PLAINS	0	0	12.60	9.10	81	309	5	0	4	399
NORFOLK	NWB	1	1	37.55	14.90	2,048	9,863	192	1,060	37	13,200
NORTH BEND	GREAT PLAINS	3	3	26.35	13.65	158	711	9	0	10	888
NORTH BURWELL	RODEO	4	4	17.05	11.20	8	98	0	0	1	107
NORTH LOUP	RODEO	2	2	17.05	11.20	42	277	2	23	2	346
NORTH PLATTE	NWB	0	0	37.55	14.90	2,266	10,349	193	525	99	13,432
OAKDALE	GREAT PLAINS	1	1	13.60	10.35	25	189	1	0	3	218
OAKLAND	NWB	3	3	36.40	14.10	143	821	8	2	12	986
OBERT	NORTHEAST NEBRASKA	2	2	7.75	5.25	8	101	0	0	2	111
OCONTO	GREAT PLAINS	0	0	10.00	6.75	35	246	4	0	6	291
OCTAVIA	LT&T	1	0	22.05	7.70	5	120	1	0	2	128
ODELL	DILLER	2	2	8.50	7.50	36	329	5	0	2	372
OGALLALA	NWB	1	1	36.40	14.10	737	2,466	89	101	22	3,415
OHIOWA	LT&T	1	0	22.05	7.70	17	160	2	0	5	184
OMAHA-135TH STREET	NWB	6	6	37.55	14.90	5,307	16,100	193	1,630	0	23,230
OMAHA-156TH STREET	NWB	6	6	37.55	14.90	1,559	9,840	122	728	0	12,249
OMAHA-30TH STREET	NWB	6	6	37.55	14.90	1,533	21,030	207	153	0	22,923
OMAHA-78TH STREET	NWB	6	6	37.55	14.90	1,560	11,159	144	1,543	0	14,406
OMAHA-84TH STREET	NWB	6	6	37.55	14.90	5,635	18,225	271	1,502	0	25,633
OMAHA-90TH STREET	NWB	6	6	37.55	14.90	8,021	18,490	461	8,278	0	35,250
OMAHA-BELLEVUE	NWB	6	6	37.55	14.90	1,937	14,433	197	898	2,064	19,529
OMAHA-DOUGLAS	NWB	6	6	37.55	14.90	8,647	17,022	898	21,711	0	48,278
OMAHA-FORT STREET	NWB	6	6	37.55	14.90	1,530	12,467	86	2,129	0	16,212
OMAHA-IZARD STREET	NWB	6	6	37.55	14.90	3,308	28,376	372	2,751	0	34,807
OMAHA-O STREET	NWB	6	6	37.55	14.90	2,701	19,013	259	376	0	22,349
ONG	LT&T	1	0	22.05	7.70	7	76	1	0	2	86
ORCHARD	GTE	2	2	13.49	7.48	73	378	3	0	10	464
ORD	GTE	2	2	13.49	7.48	392	1,474	9	0	38	1,913
ORLEANS	GTE	3	3	13.49	7.48	61	314	2	0	10	387
OSCEOLA	LT&T	0	1	22.05	7.70	133	584	4	0	5	726
OSHKOSH	UNITED	1	1	16.87	8.44	181	739	5	0	11	936
OSMOND	EASTERN NEBRASKA	0	0	16.95	10.95	121	455	3	5	6	590
OTOE	LT&T	2	0	24.05	8.05	7	116	2	0	2	127
OVERTON	NWB	2	2	36.40	14.10	64	386	6	0	8	464
OXFORD	NWB	1	1	36.40	14.10	128	478	5	3	13	627
O'NEILL	NWB	8	8	36.40	14.10	571	2,162	39	39	33	2,844
PAGE	GREAT PLAINS	2	2	13.00	9.75	25	186	1	0	3	215
PALISADE	GREAT PLAINS	1	1	12.75	9.00	51	303	2	0	4	360
PALMER	GTE	1	1	13.49	7.48	53	372	3	0	14	442
PALMYRA	LT&T	19	19	33.00	9.35	30	333	3	0	0	366
PANAMA	LT&T	19	19	33.00	9.35	20	194	1	0	0	215
PAWNEE CITY	LT&T	1	4	24.05	8.05	113	667	7	0	6	793
PAXTON	CONSOLIDATED TELCO	0	0	9.75	7.50	69	398	5	0	3	475
PENDER	NWB	0	0	36.40	14.10	179	863	10	0	7	1,059
PERU	LT&T	1	0	22.05	7.70	32	387	22	0	2	443
PETERSBURG	PETERSBURG	0	0	17.50	15.00	47	383	1	1	5	437
PHILLIPS	HAMILTON	0	0	7.00	6.00	39	311	3	1	26	380
PICKRELL	LT&T	1	0	24.05	8.05	20	249	4	0	2	275

1/1/88

EAS-RATE-ACCESS LINE DATA

EXCHANGE	COMPANY	EAS		RATES		ACCESS LINES					TOTAL
		TO	FROM	B-1	R-1	BUS.	RES.	COIN	OTHER	COMPANY	
PIERCE	PIERCE	1	1	16.10	11.10	182	1,091	15	0	23	1,311
PILGER	NWB	0	0	37.55	14.90	46	310	2	0	6	364
PLAINVIEW	PLAINVIEW	0	0	15.50	9.50	170	933	15	7	6	1,131
PLATTE CENTER	GTE	2	2	13.49	7.48	51	409	2	0	11	473
PLATTSMOUTH	LT&T	0	1	26.50	8.50	371	3,167	44	12	24	3,618
PLEASANT DALE	LT&T	19	19	33.00	9.35	12	260	3	0	0	275
PLEASANTON	GTE	1	1	13.49	7.48	40	305	1	0	33	379
PLYMOUTH	LT&T	1	0	24.05	8.05	47	334	3	0	2	386
POLK	LT&T	1	0	22.05	7.70	42	370	2	0	2	416
PONCA	GREAT PLAINS	0	0	12.75	9.00	102	517	5	0	4	628
POTTER	UNITED	0	0	16.87	8.44	46	268	1	0	11	326
PRAGUE	NORTHEAST NEBRASKA	2	2	9.25	6.25	29	369	1	2	4	405
PRIMROSE	NWB	2	2	36.40	14.10	13	109	1	0	0	123
PURDUM	CONSOLIDATED	5	5	6.50	4.00	6	84	1	0	1	92
RAGAN-HUNTLEY	GREAT PLAINS	1	1	26.35	13.65	10	118	1	0	3	132
RANDOLPH	NWB	0	0	36.40	14.10	95	740	7	4	10	856
RAVENNA	NWB	1	1	36.40	14.10	129	945	11	8	8	1,101
RAYMOND	LT&T	19	19	33.00	9.35	8	296	6	0	0	310
RED CLOUD-RIVERTON	GREAT PLAINS	0	0	25.35	12.65	187	908	7	0	10	1,112
REPUBLICAN CITY	GTE	2	2	13.49	7.48	50	259	6	0	14	329
REYNOLDS	GREAT PLAINS	0	0	(SEE CHESTER)							
RISEING CITY	LT&T	1	0	22.05	7.70	29	310	2	0	2	343
RIVERDALE	GTE	1	1	13.49	7.48	21	212	1	0	26	260
RIVERTON	GREAT PLAINS	0	0	(SEE RED CLOUD)							
ROCKVILLE	NWB	1	1	36.40	14.10	9	77	1	0	4	91
ROSALIE	EASTERN NEBRASKA	3	3	16.95	10.95	19	133	1	0	1	154
RUSHVILLE	NWB	1	1	36.40	14.10	150	668	8	7	9	842
RUSKIN	LT&T	1	0	22.05	7.70	17	142	3	0	1	163
SARGENT	NEBRASKA CENTRAL	2	2	19.00	10.75	87	495	6	0	4	592
SCHUYLER	NWB	0	0	36.40	14.10	336	2,093	33	25	12	2,499
SCOTIA	RODEO	2	2	17.05	11.20	51	284	1	0	5	341
SCOTTSBLUFF	UNITED	6	6	20.40	10.20	2,357	6,932	89	0	82	9,460
SCRIBNER	GREAT PLAINS	3	3	26.35	13.65	98	598	6	0	6	708
SENECA	CONSOLIDATED	2	2	6.50	4.00	6	69	1	1	1	78
SEWARD	LT&T	1	6	26.50	8.50	551	2,558	55	0	32	3,196
SHELBY	LT&T	1	0	24.05	8.05	56	458	4	0	2	520
SHELTON	NEBRASKA CENTRAL	1	1	19.00	10.75	116	593	7	0	3	719
SHICKLEY	LT&T	1	1	22.05	7.70	49	292	2	0	2	345
SIDNEY	NWB	0	0	36.40	14.10	764	2,921	46	239	58	4,028
SILVER CREEK	NWB	0	0	36.40	14.10	55	314	5	0	4	378
SNYDER	GREAT PLAINS	3	3	26.35	13.65	48	245	3	0	4	300
SO. SIOUX CITY-DAK. CITY	NWB	2	2	37.55	14.90	765	4,095	85	321	35	5,301
SPALDING	NWB	2	2	36.40	14.10	77	415	2	0	6	500
SPENCER	NWB	3	3	36.40	14.10	60	367	6	0	8	441
SPRINGFIELD	NWB	6	6	37.55	14.90	81	952	10	4	9	1,056
SPRINGVIEW	THREE RIVER	0	0	13.25	9.00	63	368	2	0	4	437
STANFORD	GTE	2	2	13.49	7.48	20	177	1	0	13	211
STANTON	STANTON	0	0	17.50	13.50	144	847	5	0	4	1,000
STAPLEHURST	CLARKS	2	1	15.50	12.00	16	252	1	0	9	278

1/1/88

EAS-RATE-ACCESS LINE DATA

EXCHANGE	COMPANY	EAS		RATES		ACCESS LINES				COMPANY	TOTAL
		TO	FROM	B-1	R-1	BUS.	RES.	COIN	OTHER		
STAPLETON	GREAT PLAINS	0	0	12.00	8.50	50	337	1	0	6	394
STEELE CITY	LT&T	1	0	24.05	8.05	4	94	1	0	2	101
STEINAUER	LT&T	1	0	22.05	7.70	12	108	1	0	2	123
STERLING	LT&T	1	0	22.05	7.70	38	412	2	0	3	455
STOCKHAM	HAMILTON	0	0	9.50	7.00	5	62	0	0	6	73
STRATTON	NWB	1	1	36.40	14.10	51	310	3	0	4	368
STROMSBURG	LT&T	0	1	22.05	7.70	111	728	7	0	7	853
STUART	NWB	2	2	36.40	14.10	62	414	5	0	8	489
ST. EDWARD	GREAT PLAINS	0	0	12.75	9.00	85	529	1	0	5	620
ST. LIBORY	NWB	2	2	36.40	14.10	17	311	1	0	4	333
ST. PAUL	NWB	6	6	36.40	14.10	203	1,075	13	11	13	1,315
SUMNER	GTE	1	1	13.49	7.48	21	180	3	0	12	216
SUPERIOR	LT&T	1	1	24.05	8.05	303	1,343	26	0	9	1,681
SURPRISE	LT&T	2	0	22.05	7.70	4	88	1	0	2	95
SUTHERLAND	GREAT PLAINS	0	0	12.75	9.00	108	587	11	0	9	715
SUTTON	LT&T	1	0	26.50	8.50	159	886	8	0	8	1,061
SWANTON	LT&T	1	1	22.05	7.70	10	99	2	0	2	113
SYRACUSE	LT&T	2	2	24.05	8.05	191	958	19	0	2	1,170
TABLE ROCK	LT&T	1	0	22.05	7.70	27	226	1	0	3	257
TALMAGE	LT&T	1	0	24.05	8.05	20	216	3	0	3	242
TAMORA	LT&T	1	0	24.05	8.05	17	162	2	0	4	185
TAYLOR	RODEO	3	3	17.05	11.20	33	236	3	0	1	273
TECUMSEH	LT&T	0	4	24.05	8.05	183	1,096	20	11	15	1,325
TEKAMAH	NWB	3	3	36.40	14.10	212	1,033	14	4	9	1,272
THEDFORD	CONSOLIDATED	4	4	6.50	4.00	59	207	10	16	3	295
TILDEN	GTE	1	1	13.49	7.48	96	606	11	0	18	731
TOBIAS	LT&T	0	0	17.55	6.85	15	136	1	0	2	154
TRENTON	NWB	1	1	36.40	14.10	79	419	6	3	4	511
TRI-CITY	SOUTHEAST NEBRASKA	1	1	27.50	10.50	40	548	5	13	0	606
TRUMBULL	HAMILTON	0	0	7.00	6.00	16	142	0	0	6	164
TRYON	GREAT PLAINS	0	0	13.00	9.75	18	209	1	0	4	232
UEHLING	HOOPER	1	1	8.35	6.35	41	195	3	0	2	241
ULYSSES	CLARKS	1	1	13.50	9.50	22	212	1	0	5	240
UNADILLA	LT&T	1	1	24.05	8.05	21	237	4	0	3	265
UNION	LT&T	1	0	24.05	8.05	18	373	4	0	2	397
UTICA	LT&T	2	1	26.50	8.50	52	435	6	0	4	497
VALENTINE	NWB	1	1	36.40	14.10	410	1,632	27	37	18	2,124
VALLEY	NWB	6	6	37.55	14.90	213	1,474	21	45	16	1,769
VALPARAISO	LT&T	19	19	33.00	9.35	39	420	4	0	0	463
VENANGO	GREAT PLAINS	0	0	12.00	8.50	30	137	2	0	7	176
VERDEL	THREE RIVER	0	0	13.25	9.00	5	87	1	0	2	95
VERDIGRE	GREAT PLAINS	2	2	12.75	9.00	71	431	3	0	2	507
VIRGINIA	DILLER	0	0	8.50	7.50	10	78	1	0	2	91
MACO	LT&T	1	1	24.05	8.05	23	271	11	0	1	306
WAHOO	LT&T	0	6	24.05	8.05	379	1,743	30	7	10	2,169
WAKEFIELD	NWB	0	0	37.55	14.90	104	715	6	10	5	840
WALLACE	CONSOLIDATED TELCO	0	0	9.75	7.50	52	234	2	3	3	294
WALNUT	GREAT PLAINS	2	2	13.60	10.35	1	68	0	0	4	73
WALTHILL	EASTERN NEBRASKA	3	3	16.95	10.95	83	374	1	2	8	468

1/1/88

EAS-RATE-ACCESS LINE DATA

EXCHANGE	COMPANY	EAS		RATES		ACCESS LINES					TOTAL
		TO	FROM	B-1	R-1	BUS.	RES.	COIN	OTHER	COMPANY	
WATERBURY	NWB	1	1	37.55	14.90	5	70	0	0	0	75
WATERLOO	NWB	6	6	37.55	14.90	65	540	7	5	1	618
WAUNETA	WAUNETA	0	0	10.50	7.50	95	538	4	0	1	638
WAUSA	GREAT PLAINS	0	0	12.75	9.00	93	554	2	0	4	653
WAVERLY	LT&T	19	19	33.00	9.35	144	939	15	0	1	1,099
WAYNE	NWB	0	0	36.40	14.10	403	2,192	89	42	16	2,742
WEEPING WATER	LT&T	1	1	24.05	8.05	124	605	13	0	4	746
WELLFLEET	CONSOLIDATED TELCO	1	1	15.75	11.50	17	135	2	0	2	156
WEST POINT	NWB	0	0	36.40	14.10	426	1,876	27	20	15	2,364
WESTERN	LT&T	1	1	22.05	7.70	18	227	3	0	3	251
WESTON	NORTHEAST NEBRASKA	2	2	9.25	6.25	26	412	4	0	5	447
WHITNEY	NWB	3	3	36.40	14.10	5	81	1	0	0	87
WILBER	LT&T	0	1	22.05	7.70	119	892	14	0	5	1,030
WILCOX	GREAT PLAINS	2	2	26.35	13.65	37	221	1	0	2	261
WILSONVILLE	GTE	0	0	13.49	7.48	24	134	1	0	9	168
WINNEBAGO	EASTERN NEBRASKA	3	3	16.95	10.95	103	205	2	0	3	313
WINNETOON	GREAT PLAINS	2	2	13.00	9.75	11	130	0	0	3	144
WINSIDE	NWB	0	0	37.55	14.90	37	337	1	0	6	381
WISNER	GREAT PLAINS	1	1	25.35	12.65	189	843	11	0	7	1,050
WOLBACH	GREAT PLAINS	1	1	26.35	13.65	29	216	3	0	4	252
WOOD LAKE	GREAT PLAINS	0	0	26.35	13.65	5	98	1	0	6	110
WOOD RIVER	NWB	2	2	36.40	14.10	92	676	11	2	12	793
WYMORE	LT&T	2	2	24.05	8.05	115	1,029	14	0	2	1,160
WYNDT	GREAT PLAINS	0	0	25.35	12.65	57	567	4	0	3	631
YORK	LT&T	0	5	26.50	8.50	949	3,593	97	15	23	4,677
YUTAN	LT&T	1	0	24.05	8.05	35	581	8	0	2	626
TOTAL						122,017	593,806	9,433	59,794	6,901	791,951

38 - COMPANIES
 449 - EXCHANGES
 457 - CENTRAL OFFICES

Source: 1988 Service & Rate Questionnaire
 Nebraska Public Service Commission

INTEREXCHANGE RATES

The following tables reflect a three minute call from Omaha, Lincoln and Columbus exclusive of taxes and calculated as of October 25, 1988. This compares and contrasts the long distance message rates of each interexchange carrier from those cities to seven other exchanges in Nebraska. Day, Evening, and Night/Weekend calls are compared. These rates do not reflect any special discounts offered by the interexchange carriers and are subject to change upon ten days notice.

Table 13

Originating city: COLUMBUS, NE

	Destination						
	Lincoln	Beatrice	Hastings	Grand Island	Kearney	North Platte	Scottsbluff
Rate period: DAY							
Length of call: 3 MINUTES							
AT&T	\$1.00	\$1.09	\$1.09	\$1.09	\$1.21	\$1.30	\$1.36
Dial-Net	0.75	0.75	0.75	0.75	0.75	0.75	0.75
Int'l Telecharge	1.00	1.09	1.09	1.09	1.21	1.30	1.36
Lintel	0.80	0.88	0.88	0.88	0.97	1.04	1.09
MCI	0.99	1.08	1.08	1.08	1.20	1.29	1.34
MidAmerican	0.80	0.87	0.87	0.87	0.97	1.04	1.09
Teleconnect	0.83	0.92	0.92	0.92	1.03	1.12	1.17
Telemarketing (TMC)	0.62	0.75	0.70	0.67	0.77	0.86	0.94
United Telephone (UTLD)	1.00	1.09	1.09	1.09	1.21	1.30	1.36
US Sprint	0.99	1.08	1.08	1.08	1.20	1.29	1.35
Western Union	0.70	0.76	0.76	0.76	0.76	0.81	0.86

Rate period: EVENING
Length of call: 3 MINUTES

AT&T	0.70	0.76	0.76	0.76	0.85	0.91	0.95
Dial-Net	0.54	0.54	0.54	0.54	0.54	0.54	0.54
Int'l Telecharge	0.70	0.76	0.76	0.76	0.85	0.91	0.95
Lintel	0.51	0.56	0.56	0.56	0.62	0.67	0.70
MCI	0.69	0.75	0.75	0.75	0.84	0.90	0.94
MidAmerican	0.48	0.52	0.52	0.52	0.58	0.62	0.65
Teleconnect	0.58	0.64	0.64	0.64	0.72	0.78	0.82
Telemarketing (TMC)	0.41	0.49	0.45	0.44	0.50	0.56	0.61
United Telephone (UTLD)	0.70	0.76	0.76	0.76	0.85	0.91	0.95
US Sprint	0.59	0.65	0.65	0.65	0.72	0.77	0.81
Western Union	0.44	0.49	0.49	0.49	0.49	0.52	0.55

Rate period: NIGHT/WEEKEND
Length of call: 3 MINUTES

AT&T	0.50	0.55	0.55	0.55	0.61	0.65	0.68
Dial-Net	0.42	0.42	0.42	0.42	0.42	0.42	0.42
Int'l Telecharge	0.50	0.55	0.55	0.55	0.61	0.65	0.68
Lintel	0.36	0.40	0.40	0.40	0.44	0.47	0.49
MCI	0.49	0.54	0.54	0.54	0.60	0.64	0.67
MidAmerican	0.32	0.35	0.35	0.35	0.39	0.42	0.44
Teleconnect	0.41	0.46	0.46	0.46	0.52	0.56	0.59
Telemarketing (TMC)	0.34	0.41	0.39	0.37	0.43	0.48	0.52
United Telephone (UTLD)	0.50	0.55	0.55	0.55	0.61	0.65	0.68
US Sprint	0.39	0.43	0.43	0.43	0.48	0.51	0.54
Western Union	0.40	0.46	0.46	0.46	0.46	0.49	0.51

Table 14

Originating city: LINCOLN, NE

	Destination						
	Omaha	Columbus	Norfolk	Grand Island	Kearney	North Platte	Scottsbluff

Rate period: DAY							
Length of call: 3 MINUTES							

AT&T	\$1.00	\$1.00	\$1.09	\$1.09	\$1.21	\$1.30	\$1.36
Dial-Net	0.75	0.75	0.75	0.75	0.75	0.75	0.75
Int'l Telecharge	1.00	1.00	1.09	1.09	1.21	1.30	1.36
Lintel	0.80	0.80	0.88	0.88	0.97	1.04	1.09
MCI	0.99	0.99	1.08	1.08	1.20	1.29	1.34
MidAmerican	0.80	0.80	0.87	0.87	0.97	1.04	1.09
Teleconnect	0.83	0.83	0.92	0.92	1.03	1.12	1.17
Telemarketing (TMC)	0.62	0.62	0.75	0.75	0.77	0.89	0.94
United Telephone (UTLD)	1.00	1.00	1.09	1.09	1.21	1.30	1.36
US Sprint	0.99	0.99	1.08	1.08	1.20	1.29	1.35
Western Union	0.70	0.70	0.76	0.76	0.76	0.81	0.86

Rate period: EVENING
Length of call: 3 MINUTES

AT&T	0.70	0.70	0.76	0.76	0.85	0.91	0.95
Dial-Net	0.54	0.54	0.54	0.54	0.54	0.54	0.54
Int'l Telecharge	0.70	0.70	0.76	0.76	0.85	0.91	0.95
Lintel	0.51	0.51	0.56	0.56	0.62	0.67	0.70
MCI	0.69	0.69	0.75	0.75	0.84	0.90	0.94
MidAmerican	0.48	0.48	0.52	0.52	0.58	0.62	0.65
Teleconnect	0.58	0.58	0.64	0.64	0.72	0.78	0.82
Telemarketing (TMC)	0.41	0.41	0.49	0.49	0.50	0.58	0.61
United Telephone (UTLD)	0.70	0.70	0.76	0.76	0.85	0.91	0.95
US Sprint	0.59	0.59	0.65	0.65	0.72	0.77	0.81
Western Union	0.44	0.44	0.49	0.49	0.49	0.52	0.55

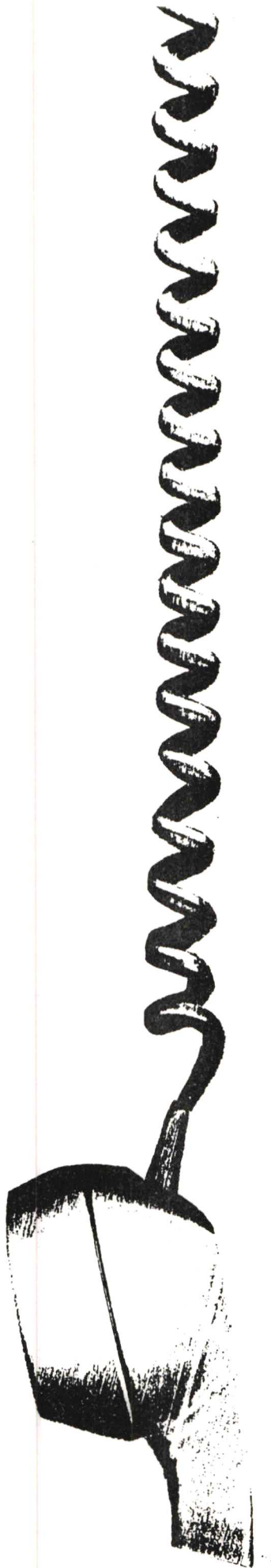
Rate period: NIGHT/WEEKEND
Length of call: 3 MINUTES

AT&T	0.50	0.50	0.55	0.55	0.61	0.65	0.68
Dial-Net	0.42	0.42	0.42	0.42	0.42	0.42	0.42
Int'l Telecharge	0.50	0.50	0.55	0.55	0.61	0.65	0.68
Lintel	0.36	0.36	0.40	0.40	0.44	0.47	0.49
MCI	0.49	0.49	0.54	0.54	0.60	0.64	0.67
MidAmerican	0.32	0.32	0.35	0.35	0.39	0.42	0.44
Teleconnect	0.41	0.41	0.46	0.46	0.52	0.56	0.59
Telemarketing (TMC)	0.34	0.34	0.41	0.41	0.43	0.49	0.52
United Telephone (UTLD)	0.50	0.50	0.55	0.55	0.61	0.65	0.68
US Sprint	0.39	0.39	0.43	0.43	0.48	0.51	0.54
Western Union	0.40	0.40	0.46	0.46	0.46	0.49	0.51

Table 15

Originating city: OMAHA, NE

	Destination						
	Lincoln	Beatrice	Hastings	Grand Island	Kearney	North Platte	Scottsbluff
Rate period: DAY							
Length of call: 3 MINUTES							
AT&T	\$1.00	\$1.09	\$1.21	\$1.21	\$1.30	\$1.30	\$1.36
Dial-Net	0.75	0.75	0.75	0.75	0.75	0.75	0.75
Int'l Telecharge	1.00	1.09	1.21	1.21	1.30	1.30	1.36
Lintel	0.80	0.88	0.97	0.97	1.04	1.04	1.09
MCI	0.99	1.08	1.20	1.20	1.29	1.29	1.34
MidAmerican	0.80	0.87	0.97	0.97	1.04	1.04	1.09
Teleconnect	0.83	0.92	1.03	1.03	1.12	1.12	1.17
Telemarketing (TMC)	0.62	0.70	0.79	0.79	0.84	0.91	0.94
United Telephone (UTLD)	1.00	1.09	1.21	1.21	1.30	1.30	1.36
US Sprint	0.99	1.08	1.20	1.20	1.29	1.29	1.35
Western Union	0.70	0.76	0.81	0.81	0.81	0.81	0.86
Rate period: EVENING							
Length of call: 3 MINUTES							
AT&T	0.70	0.76	0.85	0.85	0.91	0.91	0.95
Dial-Net	0.54	0.54	0.54	0.54	0.54	0.54	0.54
Int'l Telecharge	0.70	0.76	0.85	0.85	0.91	0.91	0.95
Lintel	0.51	0.56	0.62	0.62	0.67	0.67	0.70
MCI	0.69	0.75	0.84	0.84	0.90	0.90	0.94
MidAmerican	0.48	0.52	0.58	0.58	0.62	0.62	0.65
Teleconnect	0.58	0.64	0.72	0.72	0.78	0.78	0.82
Telemarketing (TMC)	0.41	0.45	0.52	0.52	0.55	0.59	0.61
United Telephone (UTLD)	0.70	0.76	0.85	0.85	0.91	0.91	0.95
US Sprint	0.59	0.65	0.72	0.72	0.77	0.77	0.81
Western Union	0.44	0.49	0.52	0.52	0.52	0.52	0.55
Rate period: NIGHT/WEEKEND							
Length of call: 3 MINUTES							
AT&T	0.50	0.55	0.61	0.61	0.65	0.65	0.68
Dial-Net	0.42	0.42	0.42	0.42	0.42	0.42	0.42
Int'l Telecharge	0.50	0.55	0.61	0.61	0.65	0.65	0.68
Lintel	0.36	0.40	0.44	0.44	0.47	0.47	0.49
MCI	0.49	0.54	0.60	0.60	0.64	0.64	0.67
MidAmerican	0.32	0.35	0.39	0.39	0.42	0.42	0.44
Teleconnect	0.41	0.46	0.52	0.52	0.56	0.56	0.59
Telemarketing (TMC)	0.34	0.39	0.44	0.44	0.46	0.50	0.52
United Telephone (UTLD)	0.50	0.55	0.61	0.61	0.65	0.65	0.68
US Sprint	0.39	0.43	0.48	0.48	0.51	0.51	0.54
Western Union	0.40	0.46	0.49	0.49	0.49	0.49	0.51



CONCLUSIONS AND RECOMMENDATIONS

GOALS OF THE NEBRASKA PUBLIC SERVICE COMMISSION UNDER LB 835

The Nebraska Commission has always regulated with two important policy considerations:

- Ensuring that telecommunications services are broadly available to all citizens at affordable prices.
- Ensuring the economic viability of companies responsible for providing basic telecommunications services.

Focusing attention on these goals, the National Governors Association's Committee on Transportation, Commerce and Communications chaired by Nebraska Governor Kay A. Orr, released in October of 1988, a telecommunications policy statement recommending that each state have the authority and flexibility to:

1. Regulate local service and intrastate long distance services and, where in the public interest, consider regulatory alternatives that modify, reduce, streamline, or eliminate regulation;
2. Maintain an equitable cost allocation plan among local network services, long distance services, and other telecommunications and information services which depend upon the local exchange;
3. Set economically efficient depreciation rates for telecommunications plant and equipment for the purpose of encouraging timely modernization and improvement;
4. Develop mechanisms designed to meet the specialized needs of local conditions, specific groups of customers, and those with demonstrated needs, within the context of a changing telecommunications industry.

The Commission has worked toward achieving each of these policy goals by:

Recommending re-regulation of local service and intrastate long distance services in the 1987 and 1988 reports to the Legislature. The Commission supports lessened regulation in competitive areas such as customer owned coin operated telephones (COCOT's), Interexchange carriers, and small telephone companies.

Maintaining equitable cost allocation plans among local network services by attempting to define the actual cost of basic local service through rules and regulations, thereby determining what subsidization occurs from long distance services if possible.

Prescribing economically efficient depreciation rates for telecommunications plant and equipment. The Nebraska Commission has also cooperated with the Federal Communications Commission (FCC) to develop appropriate depreciation rates for companies subject to both federal and state review.

Establishing standards for telecommunications service while recognizing special community telecommunication needs. Examples of this are pay-phone locations, central office upgrades, EAS, alternate long distance routes and enhanced 911 services. This Commission also, as explained in detail in other chapters, has designed specialized programs to serve groups of customers and will continue to evaluate their needs within the context of a changing telecommunications industry.

PROBLEMS WITH THE NEW LAW

1. Extended Area Service (EAS)

Section 86-802 Nebr. Rev. Stat. specifically excludes Extended Area Service from basic exchange service. As a result, while the Commission retains authority to authorize provision of new extended area service, it no longer has authority over the rates for the service.

An application by the citizens of Ceresco, Nebraska for EAS dramatically points this out. The applicants comprised a substantial majority of the subscribers of the Ceresco exchange. They requested extended area service between Ceresco and the communities in the Lincoln Common Service Area. Information provided to the Commission indicated that the cost of providing traditional non-optional extended area service to Ceresco would be nearly \$30.00 per month.

The Lincoln Telephone and Telegraph Co. developed an optional extended area service plan at a reasonable rate which was overwhelmingly accepted by the Ceresco subscribers. Instead of paying nearly \$30.00 per month for EAS, residential subscribers who choose to subscribe to EAS will only pay an additional \$7.00 per month. The Lincoln Telephone and Telegraph Company is to be commended for recognizing the needs of the Ceresco community.

Incidentally, because the rate is not regulated, there is no assurance that a reasonable rate will be maintained.

The statute remains a problem where non-optional extended area service is provided since it is an integral part of the customer's basic service, the cost of which cannot be avoided by the customer. The language of the statute, however, excludes this integral service from the definition of basic exchange service.

2. Actual Cost

In regard to the rate for basic exchange service, section 86-803 (3) provides "... the Commission may not set any rate or charge below the actual cost of providing such service...". As a result of this provision, and section 86-804 which provides for this annual report, the Commission proposed the adoption of the following rule and regulation:

002.44 Yearly actual cost filing. All telecommunication companies shall file in their annual report, schedules setting forth their "actual cost" of basic exchange to reflect the latest full calendar year to the best of their capability and resources.

At the public hearing on the proposed rule and regulation, Mr. Norm Osland, President of the Nebraska Telephone Association testified that:

"Requiring that local exchange carriers file annual actual cost studies imposes a costly burden for which there is no statutory requirement and for which the benefits are at best unclear. The preparation of an annual actual cost study requires the expenditure of significant time and effort. For smaller carriers with limited staff, this can mean the need to hire costly consultants. As an example, one local exchange carrier has requested an estimate from a consulting firm for performing an actual cost study. They estimated the study costs to be in excess of \$36,000, which would result in an increase in excess of \$2.00 per month in local rates for this carrier which serves approximately 1,500 access lines. For larger carriers, this requirement means the assignment of resources to an annual cost project rather than to other projects of greater benefit to the subscribers of this state. In either case, the cost of these annual studies would ultimately be borne by the customers who would see no increase in new services, quality of service, or efficiency as a result of these expenditures."

In recognition of the cost of providing the actual cost information, the Commission did not adopt the proposed rule and regulation. This testimony does, however, point out the cost associated with the statutory provision. A major problem with deregulation is controlling cross-subsidization. In order to be competitive, a company may raise rates on noncompetitive services to cross-subsidize under priced competitive services. Controlling cross-subsidization is important to insure that subscribers of basic local exchange service aren't carrying an unfair burden. It is recommended that the Legislature consider amending Section 86-303 (3) to include the "fair and reasonable" standard adopted in Section 75-609 (2).

CONCLUSIONS AND RECOMMENDATIONS

The Nebraska Public Service Commission has not ignored the link between telecommunications policy and economic development in the state; however, the Commission still remains cautious in nature.

In general, the Commission has strived for a great deal of coordination and cooperation between interested parties, and where possible, the Commission seeks to encourage development of competition, new products, ideas, and services.

Recommendations

1. Again, this Commission's first recommendation as mentioned in the past report is to re-regulate those services which are indispensable and where no alternative to the service is available.

2. Companies are required to file rate lists for new rates and services which automatically become effective ten days after notice to the Commission. The Commission is generally not opposed to the filing of rate lists; however, after the rate list is filed and effective, if complaints are received, the Commission should be able to review it. It should then be up to the company to prove that the rates are reasonable. Past experience has shown that nonsubstantive changes in tariff or reductions in rates should be automatic without the proposed complaint review.

3. Nebraska should have the general authority to re-regulate any deregulated service or company, retaining continuous jurisdiction to modify or revoke any exempted service if it is in the public interest.

4. The sunset provision of 1991 set out in LB 835 concerning the right of the consumer to petition should be stricken from the law. The right of the consumer to petition is an important guarantee to the consumers of the state that if their telephone company raises rates excessively, for the monopolistic basic local service, they will have an opportunity to have the case heard and the right to appeal the decision to the Supreme Court.

5. The sunset provision of 1991 set out in LB 835 concerning the averaging of toll rates should be stricken from the law. If toll rates are de-averaged, consumers in Western Nebraska may no longer be able to afford service. If the time should ever come when de-averaging toll was advisable, the Commission would then recommend the change to the Legislature.

There are three policy findings that this Commission believes warrant the Legislature's attention:

First, the telecommunications industry in Nebraska is experiencing a high return on its investment due to the 1986 tax act, increases in long distance revenues, low interest REA financing and appropriate depreciation schedules.

Second, pressures are building within the industry to achieve a cost based type of return on individual services instead of averaging the costs, which might threaten rural areas.

Third, certain modifications to the state's regulatory framework are necessary to accommodate inequities in the law and changes in the telecommunication industry. For example, dealing with new forms of competitive behavior requires the ability to regulate activities such as dial-a-porn, 976 services, or AOS operations.

The legislature has challenged this Commission to implement LB 835 in a volatile environment and through hard work and careful study the Commission is trying to implement a completely new approach in telecommunications policy. The Nebraska Commission will endeavor to continue to work within the bounds of the law to accomplish its two most important goals: protection of the public and the economic viability of the industry.

In conclusion, there is no doubt this is a bold new law, and whether it is successful or not largely depends upon reasonable actions of the companies under it. If the industry continues to act responsibly, the law will not be as harmful as predicted.

APPENDIX I

During the research for this Annual Report on the status of the Nebraska telecommunications industry, a 1918 telephone directory issued by Gaddis and Ellis Telephone Company in Beaver City, Nebraska was discovered.

In 1918, subscribers didn't yet have the advantage of privacy of their conversations, as almost all service was through "party lines". People who didn't want their business known by eavesdropping neighbors had to talk in code or travel to the telephone office to place a private call. Subscribers also had to place all calls through an operator, or "central." The ability to direct dial calls was still many years away for most subscribers.

Special instructions were given in the 1918 directory for party line use and for accessing central.

Today, rules and regulations still exist covering service albeit not in the same straightforward approach used in 1918. Seventy years later, Beaver City is an exchange served by GTE North, Inc.

Following is a complete list of prices, general instructions and party line instructions that were given as part of the 1918 directory:

PHONE PRICES

Business Phones, per month ----- \$1.50

Desk Phones, per month ----- 2.00

Residence Phone, per month ----- 1.00

Charge for moving phone, see instructions.

TO PARTY LINE SUBSCRIBERS

Above all keep off the line when it is in use.

All parties having access to a directory must call by number, and failing to do so, must not complain if not answered.

If you have no telephone, do not sponge off your neighbor but have a telephone installed or be willing to pay for the service you receive.

Don't answer any signal but your own. Have self-respect enough not to meddle with other subscribers' calls.

Business messages or long distance calls shall at all times have preference over social talk.

Everyone shall give up the line for a doctor call.

Subscribers will be charged with messages sent over their telephones by non-subscribers.

Non-subscribers will be charged with messages to subscribers on farm lines.

GENERAL INSTRUCTIONS

No music allowed on telephone lines.

Don't use the telephone during a thunderstorm.

For toll charges to any point inquire of central.

Be sure to report your phone at once when out of fix.

Don't ask the depot for train time, always ask central.

Don't ring off unless talkink (sic) through central, then always.

Parties calling central must give their names if requested.

Sunday hours, 7:30 to 9:30 a.m. and 4 to 6:45 p.m.

No call answered at the B. & M. depot before 8 a.m. nor after 7 p.m.

In case of fire call central, give your name and location, central will do the rest.

Five long rings means a general call and all who hear should answer at once.

Always notify central when moving, as we have no way of knowing where to locate you.

Charges for moving phone will be according to the amount of work done and material used.

In case of fire a reward of \$1.00 will be paid to any person removing phone in good condition.

Non-subscribers or others wishing to make calls when in town, please call at central or at hotel.

All parties renting one of the phones are held responsible for same while in their possession.

When an alarm of fire is sounded do not ring central for five minutes, for you will not be answered.

If subscribers permit non-subscribers to talk over their phones, or talk for non-subscribers, they will be held personally responsible and will be charged for all such calls.

All non-subscribers may pay toll for talking outside of city limits, that means any person not actually a member of the family or firm possessing a phone. The line is free to all within the city.

All parties renting one of the telephones hereby agree to abide by all rules and instructions, as printed in this directory, and all others as made by this company, which are reasonable and just.

All parties will be charged 25 cents for calls between the hours of 10 p.m. and 6 a.m., unless for a doctor or emergency, and we do not think it is an emergency when you ring your neighbor of a morning just to see if he is up yet.

Parties giving toll calls should always give their name first, then give the call. Example: "This is Mrs. Jones talking, I wish to talk to Mrs. M. Smith, Omaha, Nebraska."

In imparting information, the Gaddis & Ellis Telephone Co. assumes no liability whatever in errors which may arise therefrom.

APPENDIX II

Trends in Telecommunications Deregulation Legislation

Enthusiasm for deregulation, relaxed regulation and greater flexibility has arisen in many states and although it is growing on all fronts, several states have and others have not enacted such legislation.

In Nebraska, policymakers were told and possibly believed that deregulation would assure low cost service and attract new technology. Other states too have sought to increase competition and see increased efficiency and innovations in the telecommunications industry.

Traditional regulation in many states is facing resistance from several areas according to Professor Harry M. Trebing, Michigan State University. While speaking in Nebraska in 1988, he stated that one reason why deregulation is pushed so hard by the industry is that "industry management believes that regulation offers little protection against competition and that reforms or deregulation offer freedom to raise earnings, respond to changing market conditions and diversify."

Policymakers have been trying to respond to this dilemma by various methods for making the transition from a regulated environment to a competitive market environment. As a result, one can examine which legislation does the best job in ensuring a smooth transition and yet ensures the continued affordability and availability of universal service.

From January 1, 1983 to September 1, 1987, 22 states enacted various general statutes to deregulate telecommunications services or service providers. Below is the state by state breakdown of state telecommunications laws enacted in 1988. (As of July 22, 1988.)

Reprinted from State Telephone Regulation Report with permission by the Telecom Publishing Group.

STATE TELECOMMUNICATIONS LAWS ENACTED IN 1988 (As Of July 22)

ALABAMA

SB-38 Deaf Services Requires establishment of a statewide dual-party relay system for the deaf and speech-impaired by Jan. 1, 1989. Funding is by means of a surcharge of 20 cents/line/month paid into a trust fund to be administered by a committee appointed by the Alabama PSC. Effective April 12.

ALASKA

HB-394 Procedural/Administrative Requires that anyone wanting to take telephone service from a rural telephone cooperative must become a member of the co-op. This law also states that membership in a rural telephone co-op cannot be terminated except under the conditions specified in the cooperative's bylaws. Effective June 6.

ARIZONA

SB-1178 Dial-It Requires all "976" dial-it information vendors to disclose their charges at the start of a call and requires vendors of pornographic dial-it services to deny service to any caller who does not have a pre-established account with the vendor. This law also prohibits dial-it vendors from attempting to collect on a bill that has been forgiven by the telco and prohibits use of dial-it services for marketing or referral purposes. Violation of this law is a misdemeanor. Effective Sept. 30.

SB-1295 Lifeline Extends by one year, to June 30, 1990, the sunset of state funded lifeline telephone assistance to the poor. Effective Sept. 30.

HCR-2011 Deregulation/Detariffing Requires a referendum be held in the Nov. 8 general election on a constitutional amendment to repeal the "fair value" formula for calculating utility rate bases. No alternate formula for calculating utility rate bases is prescribed. Passed May 11.

CALIFORNIA

SB-679 Dial-It Requires separate exchange for services offering "matter harmful to minors," i.e. pornographic matter. Vendors must self-certify the nature of their service when they take dial-it facilities; civil penalties are provided if a vendor lies about the nature of a service. Telcos must offer free blocking of dial-it services, once per customer account. Telcos may charge for subsequent unblocking. Costs of the free blocking are to be borne by dial-it vendors. Effective June 21.

SB-2268 Deaf Services Changes the manner of funding for the state's equipment and dual-party relay programs for the deaf, hearing impaired and speech impaired from a dime-a-line monthly surcharge to a surcharge of up to a half-percent on all intrastate phone charges. The Public Utilities Commission must set the surcharge for 1988 at a level to generate \$32 million. The PUC must submit an annual report on the deaf fund to the legislature on Dec. 31, 1988 and each Dec. 31 thereafter. Under the law, surcharge goes back to dime a line on July 1, 1990. Effective July 1.

CONNECTICUT

Substitute HB-6031 Taxes Extends by one year the transition period for moving a newly deregulated telephone service from the gross receipts tax schedule applied to regulated services over to the tax schedule applied to unregulated services. Also orders a legislative panel to study what changes may be in order as to how the state taxes regulated and unregulated services; the panel must be ready to report back to the legislature by Jan. 1 1989. Effective June 6.

HB-5914 Facilities Exempts from state occupational licensing requirements those telephone company employees who install and maintain inside wiring for single-line residential and business service. Effective May 20.

Substitute HB-5413 Procedural/Administrative Gives the Department of Public Utility Control the statutory authority to review business transactions between a regulated utility operating company and any other company that is a subsidiary or affiliate of the utility and the power to adjust the operating company's regulated rates if a transaction with an affiliate is found to be inappropriate. Effective Oct. 1.

Substitute SB-21 Deaf Services Provides that any new telecommunications provider authorized by the Department of Public Utility Control is subject to the special expense assessment that supports the state's telephone equipment program for the deaf. This law also sets the amount to be raised for the program in 1988 at \$50,000. Effective July 1.

Substitute HB-5413 Procedural/Administrative Provides that any new telecommunications provider authorized by the Department of Public Utility Control is subject to the special expense assessment that supports the DPUC's operations. Exemptions are made if the provider is strictly a wholesaler of service or if his annual gross revenues are below \$100,000. Effective Oct. 1.

FLORIDA

SB-830 Taxes Requires a local government that levies municipal public service taxes on interexchange carriers to supply the carrier with a complete listing of the street and premises rights-of-way on which the carrier is paying taxes. Effective Oct. 1.

HB-349 Taxes Requires that local governments keep confidential any proprietary business information supplied to the locality by an interexchange carrier for the purpose of administering local taxation. Effective Oct. 1.

SB-396 911 Permits local governments to continue funding of nonrecurring 911 expenses from phone bill surcharges by repealing

the statutory Dec. 1, 1988 sunset date for such funding.
Effective June 18.

GEORGIA

HB-218 911 Permits counties and cities to call elections to set up E-911 emergency calling systems; authorizes phone-line surcharge, collected by telcos, to fund 911 operation and maintenance. Effective July 1.

HB-1234 Deregulation/Detariffing Permits the Public Service Commission to relax regulation of competitive services; PSC can detariff or deregulate. Measure allows deregulation if needed. Cross subsidies in either direction between regulated services and unregulated businesses are prohibited. Effective April 14.

HB-1284 Dial-It Bans use of autodialers to sell 976 services. Effective April 7.

HB-1497 Dial-It Requires 976 vendors to identify themselves in ads and state their charges in ads, in type the same size as the phone number. Effective March 28.

SB-484 911 Prohibits cellular phone companies from charging for 911 calls. Effective July 1.

HAWAII

SB-2633 Deaf Services Provides for establishment of a statewide dual-party relay system for use by the deaf and hearing impaired. System is to become operational by July 1, 1989, with funding to come from a phone-bill surcharge to be set by the Public Service Commission. Effective July 1.

SB-2802 Procedural/Administrative Requires prior review and approval by the Public Service Commission of contracts for the purchase of unregulated goods or services made by a telephone operating company from an affiliated entity owned by the same holding company. Effective July 1.

HB-3299 Deregulation/Detariffing Orders a legislative committee to study the effects on the public and the telephone industry if payphones and shared tenant services were to be flexibly regulated and thrown open to competition. The panel must report back to the legislature at the start of the 1989 session. The law appropriates \$150,000 to fund the study. Effective July 1.

HR-313/HCR-241 Measured Service A resolution expressing the wish of the legislature that the Public Service Commission use extreme caution and carefully consider all ramifications when considering any telco rate design proposal involving local measured service. Passed April 26.

IDAHO

HB-687 Deregulation/Detariffing Provides for deregulation of all telecommunications services other than basic local service supplied to a residential customer or to a business customer having five or fewer lines; basic local service remains under full rate-of-return regulation. Telecom companies have the option of staying with traditional rate-of-return regulation or electing for regulation under the 1988 law. The law also provides that telephone companies who provide toll service must charge themselves for access at the same rate paid by long distance companies. Effective July 1.

HB-577 911 Provides that if 60 percent of the voters in a general election approve, a city or county can implement a 911 emergency calling system and collect a phone bill surcharge of up to \$1 per month to support 911. Effective April 6.

INDIANA

HB-1062 911 Permits cities and counties to establish 911 systems by ordinance; provides for funding through local service surcharge of up to 3% for localities over 35,000 people or up to 10% for localities under 35,000. Effective June 1.

HB-1117 Measured Service Imposes moratorium on multi-element local measured service until July 1, 1991. Also requires Utility Regulatory Commission to make a study on the impacts of differing methods for regulatory flexibility and file an interim report May 1, 1989, and final report Dec. 1, 1989, to a state interim legislative council. Also requires that telecom maintain reasonable and non-preferential rates for carrier access services. Effective July 1.

SB-183 Telemarketing Limits use of autodialers for sales to the hours between 9 a.m. and 8 p.m., requires "live" introduction to recorded sales presentation and requires the machine to disconnect immediately when the listener hangs up. Effective July 1.

SB-239 Deregulation/Detariffing Permits deregulation of telcos under 6,000 lines (18 telcos qualify). Telco itself or 500 subscribers or 10% of subscribers can petition for deregulation. Deregulation can be granted after a commission hearing. A deregulated telco must still file annual reports. Regulators will still resolve individual complaints and can re-regulate if necessary. Effective July 1.

IOWA

HF-2400 911 Permits cities and counties to create 911 emergency call systems funded by phone bill surcharges. Localities must create a service district board for the area covered by service

and can impose a phone bill surcharge of up to 25 cents a line a month, subject to approval by voter referendum. County systems are coordinated through the state Division of Disaster Services, Dept. of Public Safety. Effective May 6.

HF-2387 Facilities Amends state law chapter 477, which governs the contractual rights and responsibilities of the parties involved in public utility construction and removal projects, to explicitly state that cable systems are covered by the provisions governing telephone lines. Effective July 1.

HF-2153 Procedural/Administrative Gives state's (sic) regulators 30 days (instead of 20 days) to decide on petitions for rehearing. Limits the filing of applications for rehearing to contested cases only. Effective July 1.

KANSAS

HB-2958 Deregulation/Detariffing Deregulates radio common carrier services including cellular, paging and mobile radiophone services. Effective July 1.

KENTUCKY

HB-874 Taxes Sets a 33% increase in the ceiling rate for the intrastate gross receipts tax levied on telephone companies and other public utilities to fund the operations of the Public Service Commission. The new ceiling tax rate is two-tenths of a cent on each dollar of gross receipts collected on intrastate services with a minimum annual tax of \$50. Effective July 15.

LOUISIANA

HB-180 Deaf Services Authorizes creation of the Louisiana Commission for the Deaf, charged with implementing special telecom programs for the deaf and speech impaired. Deaf commission's programs will be funded by means of state tax of a nickel a line a month. Effective Sept. 1.

HB-786 Dial-It Permits 976 dial-it services and other types of telephone-based information services to report horse racing results; says such reporting does not run afoul of state anti-gambling statutes. Effective Sept. 9.

HB-785 911 Puts a cap on the surcharge a county or special emergency district can levy on phone lines to support 911 services. 911 surcharge cannot exceed 5% of the highest prevailing tariffed local rate available from a telco serving the county or 911 district. Effective Sept. 9.

MAINE

LD-2608 911 Provides for establishment of a statewide enhanced 911 emergency calling system by July 1, 1993. Provides for

initial \$3.5 million in start-up money through a bond issue that will be subject to voter referendum in November. Effective April 20.

MARYLAND

HB-140 Deregulation/Detariffing Deregulates cellular, paging and mobile radiophone services by repealing the sections of the utility code that covered radio common carrier services. Effective July 1.

HB-220 Procedural/Administrative Provides for staggered terms for the members of the state Telecommunications for Disabled Individuals Board. Previously, all members were up for reappointment at once. Effective July 1.

SB-409 Telemarketing Provides that agreements made over the phone to purchase consumer goods and services cannot be enforced unless the consumer signs and returns a written copy of the purchase agreement. The law also specifies what information must be included in the written copy. Effective July 1.

SB-510 Procedural/Administrative Disbands the state Utilities Consumer Advisory Board, a panel which has been defunct in practice but which still had a statutory life. Effective July 1.

MICHIGAN

SB-822 Facilities Prohibits public school students from carrying or possessing telephone pagers on school grounds. Effective July 5.

HB-5415 Procedural/Administrative Exempts the Public Service Commission from the state open meetings law when the PSC meets to deliberate the merits of a case. Effective June 14.

HB-4638 Facilities Repeals the statutory requirement that a telephone company or other regulated utility maintain a business office in each county. Effective July 7.

HB-5334 Procedural/Administrative Updates the interest rates that telcos and other utilities must pay on customer service deposits to reflect current financial market conditions. Effective June 7.

MINNESOTA

SF-1809 Lifeline Provides the eligibility for the state Telephone Assistance Program be extended to include low-income handicapped persons. Law previously limited TAP to low-income elderly. Effective April 25.

SF-2402 Privacy Updates language in state's telephone privacy (wiretap) law to cover new telephone technologies including

cellular, videophone and fiber optic communications. The link between a cordless phone's handset and base is excluded from the legal definition of a private telephone connection. Effective Aug. 1.

HF-2020 Procedural/Administrative Changes procedures for handling general rate cases. Allows regulators to extend by 20 working days the 10-month statutory deadline for deciding a telco general rate case, if multiple utility rate cases are pending. In the event that a Public Service Commission decision to extend the deadline on a rate case puts the telco in the position of filing a second rate case before the first one is decided, the law waives the doubly long time intervals normally required before interim rate boosts can be implemented in back-to-back rate cases. For electric and gas rate cases, the law provides that if the PSC modifies a proposed settlement agreement, the affected parties have 10 days to accept the PSC's changes. If the parties cannot agree to accept the changes, the case goes back to hearings. Effective April 7.

HF-2344 911 Provides for an appropriation of \$119,300 from the state special revenue fund to support local 911 emergency calling systems for the fiscal year that ended June 30, 1988, and an appropriation from the special revenue fund of \$488,900 for 911 systems during the fiscal year ending June 30, 1989. Effective July 1.

MISSISSIPPI

HB-1221 Deregulation/Detariffing Permits the Public Service Commission to deregulate optional telecom services and basic services where the commission finds that competition or other market forces are enough to protect the public interest. Effective July 1.

MISSOURI

SB-481 Deregulation/Detariffing Deregulates the rates of telephone cooperatives for all services other than exchange access services provided to interexchange carriers. Regulators retain jurisdiction over service quality. Law sunsets Sept. 30, 1992. Effective August 13.

HB-1290 Lifeline Creates the "Economy Rate Telephone Service Fund" to support discounted lifeline phone rates. This fund will draw from the state's general tax revenues and will be administered by the Public Service Commission. Effective August 13.

HB-1670 Procedural/Administrative Gives the Public Service Commission the authority to approve telco tariffs containing discounted rates for service connections made under the Link Up America connection assistance plan. Effective August 13.

NEBRASKA

LB-180 Telemarketing Amends autodialer statute to provide that permits to use autodialers for sales or charity solicitation must be renewed every two years. Also hikes permit fee from \$10 to \$500, and prohibits any use of sequential autodialers. Existing permit holders have until the end of 1988 to apply for renewal. Law also requires that any entity using autodialers for market surveys, employee notification or other non-solicitation purposes must register their device with state regulators. Effective July 9.

NEW HAMPSHIRE

HB-966 Deregulation/Detariffing Deregulates cellular telephone and cable TV services. Effective May 30.

PENNSYLVANIA

HB-429 Dial-It Requires all vendors of 976 dial-it services to tell callers that their service costs money and that charges will appear on the caller's phone bill. Services that offer sex-oriented matter must state that fact to callers at the start of a call. Telcos must offer free blocking of dial-it services with costs borne by dial-it vendors. Vendors of pornographic dial-it services must deny service unless the caller has established an account with the service and enters a nine-digit personal identity number. Violation of this law is a misdemeanor. Effective June 1, however enforcement of the presubscription requirement in this law has been suspended pending the outcome of constitutionality challenges in the courts.

SOUTH CAROLINA

R-609/S-1150 Deregulation/Detariffing Permits the Public Service Commission to detariff billing and collection services and Centrex services in whole or in part if the commission finds they are subject to competition. PSC retains jurisdiction over service quality and adjudicates complaints and disputes. Effective May 7.

SOUTH DAKOTA

SB-42 Deregulation/Detariffing Classifies telephone services into fully regulated non-competitive services, flexibly regulated emerging competitive services and deregulated fully competitive services. It provides for reclassification of services and reregulation. The Public Service Commission has until Oct. 1 to determine if the legislation correctly classified telephone services. This law was to have become effective July 1 but has been put on hold following a successful petition drive by deregulation opponents who wanted the voters to decide if phones should be deregulated. A referendum question will appear on the Nov. 8 general election ballot.

VERMONT

HB-516 Taxes Provides for a three-year transition for telecommunications companies from a gross receipts tax to the corporate income tax and business personal property tax. The transition starts July 1, 1988. Effective July 1.

VIRGINIA

SB-312 Taxes Provides for 10-year phaseout of gross receipts tax on telecom companies and phase-in of corporate income tax. The transition starts July 1, 1988. Effective July 1.

SB-185 Privacy Updates the language of the state's wiretap law to reflect current telecommunications technology. Effective July 1.

SJR-21 AOS A resolution that calls upon the Corporation Commission to undertake a study of alternate operator services and other competitive issues related to the private payphone business. The commission is to report back to the legislature by December on possible courses of action. Passed March 10.

WASHINGTON

SB-6745 AOS Requires that the identity and charges of an AOS company who takes intrastate calls or who renders charges through a Washington telco must be stated to users. Exact rules are to be drawn up by the Utilities and Transportation Commission. Penalty includes \$200 fine, refund of charges or UTC sanctions like disconnection. Effective June 9.

SB-6703 Facilities Requires contractors to notify telcos and utilities 48 hours in advance of excavation through one-number locator service, if available, or by letter. Limits contractor liability to actual cost of repair if the contractor cuts a fiber-optic cable that was not marked or was mislocated by the telco or interexchange carrier, provided the contractor gave proper notice of intent to excavate. Effective June 9.

HB-1796 Dial-It Requires any telco offering 976 facilities to dial-it vendors to offer free blocking; costs are borne by information services vendors. This law directs the UTC to develop rules to limit access by minors to dial-a-porn and other objectionable services. Effective June 9.

For further information on State Telephone Regulation Report or to order a subscription, contact Circulation Dept., Telecom Publishing Group, P.O. Box 1455, Alexandria, VA 22313-2005. Tel: (703) 683-4100.

APPENDIX III

APPLICATIONS FILED SINCE NOVEMBER 1, 1987

<u>DATE</u>	<u>APP NO.</u>	<u>APPLICANT</u>
12-10-87	C-748	LT&T for authority to adjust existing depreciation rates on various classes of equipment.
01-12-88	C-749	United Telephone Long Distance Co. of the Midwest, Overland Park, Kansas for a Certificate of Public Convenience and Necessity to provide interLATA interexchange telecommunication services within the state of Nebraska.
02-01-88	C-750	Hamilton Telephone Co., Aurora, Nebraska for authority to revise the exchange area boundary of its Stockham, Nebraska exchange.
02-03-88	C-751	Plainview Telephone Co., Plainview, Nebraska for authority to borrow from the United States of America through the Rural Electrification Administration.
02-18-88	C-752	AT&T for Review of the Intrastate Access Charges of Pierce Telephone Co., Inc.
02-18-88	C-753	Teleconnect Co. and Teleconnect Long Distance Services and Systems Co., to transfer Certificates of Public Convenience & Necessity to Provide InterLATA & IntraLATA Interexchange Telecommunications Services within the State of Nebraska.
02-19-88	C-754	The Telephone Committee and Citizens for EAS, et.al., requesting extended area service for the community of Ceresco, Nebraska.
02-24-88	C-755	FirstTier Data Services, Inc., for authority to provide intrastate interLATA telephone service.

<u>DATE</u>	<u>APP NO.</u>	<u>APPLICANT</u>
03-28-88	C-756	Telebeep, Inc. of Norfolk, Nebraska for authority to receive service from Pierce Telephone Co.
06-15-88	C-757	Mr. & Mrs. Gaylen Bierschenk, Randolph, Nebraska for authority to receive service from Randolph exchange of the NWB Telephone Co.
06-20-88	C-758	MidAmerican Long Distance Co., Omaha, Nebraska for a Certificate of Public Convenience & Necessity to provide InterLATA Interexchange Telecommunications Services within the State of Nebraska.
06-23-88	C-759	Sam West d/b/a Sherwood Forest Kennels, Reynolds, Nebraska for authority to receive telephone service from the Mahaska, Kansas exchange of the Con-Tel Telephone Co.
07-20-88	C-760	Keystone-Arthur Telephone Co., Keystone, Nebraska, a Nebraska Corp, for authority to adjust and modify its certain note of August 4, 1982, issued to the United States of America.
08-22-88	C-761	I. Steve & Raelynn Bygland d/b/a Bygland Dirt Contracting, Inc., Albion, Nebraska for authority to receive telephone service from the Albion exchange of the General Telephone Co. (GTE).
09-27-88	C-762	Northeast Nebraska Telephone Co. for authority to revise service area boundary of its Clearwater, Nebraska exchange.
10-06-88	C-763	Nebraska Public Service Commission on its own motion to establish guideline depreciation rates for accounts established in Part 32 of the new Uniform System of Accounts (USOA).

<u>DATE</u>	<u>APP NO.</u>	<u>APPLICANT</u>
10-11-88	C-764	Rodeo Telephone, Inc., Burwell to Sell and The Nebraska Central Telephone Co., Gibbon, Nebraska to acquire all of the operating property and assets of Rodeo Telephone, Inc. and for a Certificate of Convenience and Necessity for the Nebraska Central Telephone Co. to provide telecommunication services to the telephone exchanges of Rodeo Telephone, Inc.
10-24-88	C-765	Northeast Nebraska Telephone Co. for (1) Authorization for the acquisition by Northeast Nebraska Telephone Co. of Craig Telephone Co. assets other than its common stock (2) Approval of the dissolution of Craig Telephone Co. (3) Authorization for Northeast Nebraska Telephone Co. to operate in Craig Telephone Co.'s service territory.

FORMAL COMPLAINTS FILED SINCE NOVEMBER 1, 1987

<u>DATE</u>	<u>FC NO.</u>	<u>APPLICANT</u>
02-09-88	FC-1211	Telephone Committee and Citizens for Extended Area Service, et.al., Ceresco, Nebraska, vs. The Lincoln Telephone & Telegraph Company, Lincoln, Nebraska for failure to provide adequate service.
03-03-88	FC-1213	House Corporation of Lambda Chi Alpha Fraternity, Gamma Beta Chapter, Lincoln, Nebraska, Complainant, vs. the Lincoln Telephone & Telegraph Company, Lincoln, Nebraska for improper designation of service.
04-04-88	FC-1214	Dr. D.B. Doerr, Verdon, Nebraska, vs. Southeast Nebraska Telephone Company, Falls City, Nebraska for classification of services as business - omission of listing.

<u>DATE</u>	<u>FC NO.</u>	<u>APPLICANT</u>
04-05-88	FC-1215	Herb Sherdon, Complainant, vs. Gary Fornia dba Events Marketing/Events Publishing for unauthorized use of an Automatic Dialing Announcing Device.
08-11-88	FC-1217	Charles H. Wagner, Wahoo, Nebraska, Complainant, vs. Hooper Telephone Co., Hooper, Nebraska, Defendant for improper disconnection.
08-18-88	FC-1218	American Data Systems, Omaha, Nebraska to require US West Communications to provide customer provided semi public service at flat rates.
08-22-88	FC-1219	American Data Systems, Omaha, Nebraska, vs. Lincoln Telephone & Telegraph Company new tariff for Billed Number Screening and Blocking as it pertains to customer owned coin operated telephone service.

RATE LISTS FILED SINCE NOVEMBER 1, 1987

During the last year, 153 rate lists were filed with the Commission. Under LB 835, these rate lists automatically become effective ten days after filing. Before LB 835, these rate lists would have been tariff applications which would have required an application fee and a protest period and possibly a hearing before the carrier could make the change. The rate lists changing the rates for services would have only occurred in conjunction with a rate case.

<u>DATE</u>	<u>COMPANY</u>	<u>SUBJECT</u>
11-02-87	NWB	Index-Rate List Filings
11-02-87	NWB	Command A Link
11-05-87	Great Plains	Elimination of Party Line Service, Arnold Elimination of Improved Mobile Telephone Service, Addition of Custom Calling Service in Arnold and Herman

<u>DATE</u>	<u>COMPANY</u>	<u>SUBJECT</u>
11-06-87	GTE North Inc. (formerly General Telephone Company of the Midwest)	Basic Exchange Rate Increase
11-10-87	United	Emergency Number Service (911)
11-17-87	NWB	Caroline Service, Dial Data Access Restriction, General Rules and Regulations Applying to Telephone Service
11-18-87	Plainview	CPE Tariff
11-18-87	US Sprint	Sprint Advanced Wats Plus and Banded Wats Increase Rates for Sprint Advanced Wats and Dial "1" Wats
11-19-87	Hartman	CPE Tariff
11-20-87	K & M	CPE Tariff
11-20-87	NWB	Access Service Price List, Called Number Identification Service
11-23-87	Curtis	CPE Tariff
11-23-87	Consolidated Telco Inc. (formerly Chrisp Telephone Company)	CPE Tariff
11-23-87	Consolidated Telephone Co.	CPE Tariff
11-24-87	Eastern Nebraska	CPE Tariff
11-24-87	Arlington, Blair, Rock Co. Telephone Companys	CPE Tariff
11-24-87	LinTel Systems	WATS
11-25-87	Plainview	CPE Tariff
11-25-87	Hooper	CPE Tariff
11-25-87	Petersburg	CPE Tariff
11-30-87	Clarks	CPE Tariff

<u>DATE</u>	<u>COMPANY</u>	<u>SUBJECT</u>
11-30-87	Hamilton	CPE Tariff
11-30-87	Pierce	CPE Tariff
11-30-87	NWB	General Rules and Regulations Applying to Telephone Service
11-30-87	GTE North	CPE Tariff
11-30-87	NWB	Dial Data Access Restriction, Caroline Service
11-30-87	Northeast Nebr.	CPE Tariff
11-30-87	Cozad	CPE Tariff
12-01-87	United	CPE Tariff
12-01-87	Diller	CPE Tariff
12-02-87	Hartington	CPE Tariff
12-03-87	Cambridge	CPE Tariff
12-03-87	NWB	DID Optional Features
12-03-87	LT&T	Directory Assistance
12-04-87	Stanton	CPE Tariff
12-07-87	Dalton	CPE Tariff
12-14-87	Clarks	Increase Installation Charges
12-14-87	Plainview	Establish Local Operator Charges
12-14-87	LT&T	CPE Tariff Amendments
12-15-87	Eastern Nebr.	Revised Local Rates, Touch Tone, Trunk Hunting, Public Telephones
12-15-87	Great Plains	Combine Local Switching and Line Termination
12-15-87	NWB	Teenlink Service and ANI
12-16-87	Keystone-Arthur	CPE Tariff
12-21-87	NWB	Teenlink Service, ANI and Order Entry Service

<u>DATE</u>	<u>COMPANY</u>	<u>SUBJECT</u>
12-21-87	NWB	Index-Rate List Filings
01-07-88	Hartington	Operator Assistance
01-08-88	LT&T	Directory Assistance
01-12-88	NWB	Caroline and Teenlink
01-14-88	MCI	Credit Card Service Fee 800 Service Promotion
01-20-88	AT&T	Outward WATS, 800, Megacom, Megacom 800, Software Define Network (SDN), Reach Out Nebraska
01-25-88	GTE North	Local Exchange Service
01-25-88	NWB	Caroline and Teenlink
01-25-88	NWB	Dial Data Access
01-26-88	AT&T	MTS Interstate Rates
01-29-88	Clarks	Directory Assistance
02-04-88	NWB	Dial Data Access
02-08-88	GTE North	Semi-Public Coin
02-11-88	NWB	Intracall
02-16-88	Clarks	Service Order Charge for Foreign Listing
02-16-88	Lintel System	Dedicated Port Installation Charge, Description of Service
02-19-88	NWB	Introduce Equal Access Restriction Service (EARS) and Price List for Intrastate Interexchange Carrier Billing and Collection Services
02-22-88	US Sprint	Payment Arrangements, CPE
03-08-88	NWB	EARS
03-14-88	LT&T	Directory Assistance Service Charge
03-16-88	TMC	Resale of WATS

<u>DATE</u>	<u>COMPANY</u>	<u>SUBJECT</u>
03-16-88	MCI	800 Service Promotional Offer
03-18-88	US Sprint	Introduce CLEARLINE 1.5 Service and Misc.
03-23-88	GTE North	Direct Inward Dial Correction
03-24-88	LT&T	Change to Primary and Additional Telephone Service
03-31-88	United	Access Service
03-31-88	Huntel System	Rate Changes for Arlington Telephone, Eastern Nebr. Telephone, Rock Co. Telephone, Blair Telephone Co.
04-06-88	LT&T	Directory Assistance Service
04-12-88	NWB	Price Lists for VersaNet SM Service and TeleMarque SM Service
04-12-88	NWB	Access Lines
04-15-88	LT&T	New Digital Services
04-15-88	LT&T	New Meet-Me Conference Budget Service
04-19-88	NWB	Price Change Residence TeleChoice Catalog
04-25-88	NWB	Rate List - Premium Centron Custom
04-26-88	Western Union	Increase in the Basic Shared Dial Access Day & Evening Time Period
05-02-88	NWB	Revised Catalog for IntraCall
05-11-88	NWB	Revised List for Dial Data SM Access Restriction
05-11-88	GTE	Change to Custom Calling Packaging
05-11-88	Teleconnect	800 Daysaver, 800 Daysaver Plus, 800 Hello America

<u>DATE</u>	<u>COMPANY</u>	<u>SUBJECT</u>
05-17-88	Hooper	Revised Local Operator Assistance Charges, Service Connection Charges
05-19-88	NWB	Index-Rate List Filings
05-20-88	NWB	Intracall Catalog, Dial Data Access Restriction Catalog
05-27-88	NWB	VersaNet Service Catalog, TeleMarque Service Catalog
05-31-88	LT&T	Digital Services
06-01-88	Teleconnect	Establish Operator Services
06-07-88	United	Implement Link-Up Nebraska
06-10-88	LT&T	Digital Services
06-16-88	NWB	Local Exchange Rate List, General Exchange Rate List, Teen Link Service Catalog
06-21-88	Petersburg	Link Up Nebraska Program
06-23-88	NWB	Caroline Service Catalog
06-24-88	NWB	Link Up Nebraska
06-24-88	Teleconnect	Max-Save
06-27-88	Hooper	Local IntraLATA Operator Assistance Charges
06-27-88	GTE	Link Up Nebraska
06-27-88	LT&T	Link Up Nebraska
06-27-88	NWB	Teen Link Service Catalog, Local Exchange Rate List, General Exchange Rate List
07-01-88	NWB	Business Caroline Service Catalog
07-06-88	Northeast Nebr.	Link Up Nebraska
07-06-88	Diller	Link Up Nebraska
07-06-88	Hartington	Link Up Nebraska

<u>DATE</u>	<u>COMPANY</u>	<u>SUBJECT</u>
07-07-88	Clarks	Link Up Nebraska
07-08-88	Plainview	Link Up Nebraska
07-11-88	K&M	Link Up Nebraska
07-11-88	Curtis	Link Up Nebraska
07-12-88	Teleconnect	Intrastate NE Directory Assistance
07-12-88	Nebr. Central	Link Up Nebraska
07-13-88	Great Plains	Link Up Nebraska
07-14-88	NWB	Caroline Services
07-14-88	Three River	Link Up Nebraska
07-14-88	US West	General Exchange Rate List
07-18-88	LT&T	2 Way Optional Extended Area Service Between Ceresco & Lincoln Common Service Area
07-19-88	US Sprint	Reduce Rates for: Sprint Advanced WATS Service Sprint Advanced Wats PLUS Service, Dial "1" WATS Service, BANDED WATS Service
07-19-88	US West	Coin Telephones, Directory Assistance, Business Caroline and Business Custom Calling, Line Backer
07-20-88	Hooper	Link Up Nebraska, Local and IntraLATA Operator Assistance Charges
07-21-88	US West	Operator Service and Special Promotion
07-22-88	US West	Customer, Name, Locality Catalog, Operator Services, Toll
07-27-88	US West	Operator Services
07-27-88	US West	Local Measured Service
07-29-88	US West	Special Promotion Catalog

<u>DATE</u>	<u>COMPANY</u>	<u>SUBJECT</u>
07-29-88	LT&T	Billed Number Screening, Blocking for COCOT Service
08-01-88	Dalton	Link Up Nebraska
08-03-88	Great Plains	Construction & Line Extension Policy
08-08-88	US West	Special Promotion Catalog, General Exchange Rate List, Long Distance Message, Telecommunications Service Catalog
08-08-88	K&M	Operator Service Rates Changes
08-23-88	Clarks	Local and IntraLATA Operator Services
08-29-88	US West	Special Promotion Catalog, Residence Telechoice Catalog, Billing Services Catalog, 976 Info Delivery Service, 960 Network Access Service
08-30-88	Teleconnect	All-Call Service, Travel Service
09-14-88	US West	TeleMarque Service Catalog
09-14-88	LT&T	Directory Assistance Service
09-15-88	Plainview	Local Services
09-15-88	Eustis	Custom Calling Features
09-16-88	AT&T	Nebraska Intrastate Message Telecom. Service
09-20-88	Lin Tel System	Specialized Common Carrier Service
09-22-88	US West	Custom Calling Service Catalog, Message Delivery Service Catalog
09-26-88	US Sprint	Operator Service Assistance for Person to Person and Station to Station, Directory Assistance Call Completion, FONCARD Calls

<u>DATE</u>	<u>COMPANY</u>	<u>SUBJECT</u>
09-28-88	US West	Integrated Services Digital Network
10-03-88	US West	Custom Calling Service Catalog
10-04-88	Nebr. Telephone	Directory Assistance Surcharge
10-04-88	LT&T	Mobile Telephone Service and Radio Paging Services
10-04-88	US West	Local Exchange and General Exchange Rate Lists
10-07-88	US West	Integrated Services Digital Network Catalog
10-11-88	US West	Local Exchange and General Exchange Rate Lists, New Catalogs for Public Service, Shared Payphones, Public Access Line Service
10-13-88	GTE	Joint User Service, General Rules & Regulations
10-14-88	Teleconnect	800 Superwats Plus, Daysaver I, Superwats Plus
10-17-88	Curtis	Directory Assistance Service, Local Operator Assistance Service
10-17-88	US West	Local Exchange Rate List, General Exchange Rate List
10-18-88	LT&T	Directory Assistance Services
10-20-88	US West	Local Exchange Rate List, Local Exchange Tariff, General Exchange Rate List, Shared Payphone Catalog, Public Service Catalog, Public Access Line Service Catalog
10-24-88	Teleconnect	Changes to Long Distance Services and Systems (MTS Services Section)
10-24-88	AT&T	Series 1000 Channel Services

*This list contains duplicate filings for Northwestern Bell (U.S. West Communications, Inc.)