



**VISTABEAM**  
INTERNET

*Extraordinary* Connections

## Attachment L – Project Diagram

Examples of Vistabeam's core network and segment routing architecture are provided below. The specific key infrastructure (base nodes at towers, remote nodes at farm site(s)) and pathways (Tarana air interface link between base and remote nodes) for the project are effectively diagrammed at scale in the Attachment K shapefiles.

**vistabeam.com**

PHONE **308-635-9434** TOLL FREE **888-251-0920** EMAIL **hello@vistabeam.com**

**HEADQUARTERS:**

1225 Sage Street  
Gering, NE 69341

**REGIONAL OFFICES:**

304 South Main Street  
Yuma, CO 80759

1208 Center Avenue  
Mitchell, NE 69357

1839 Main Street  
Torrington, WY 82240

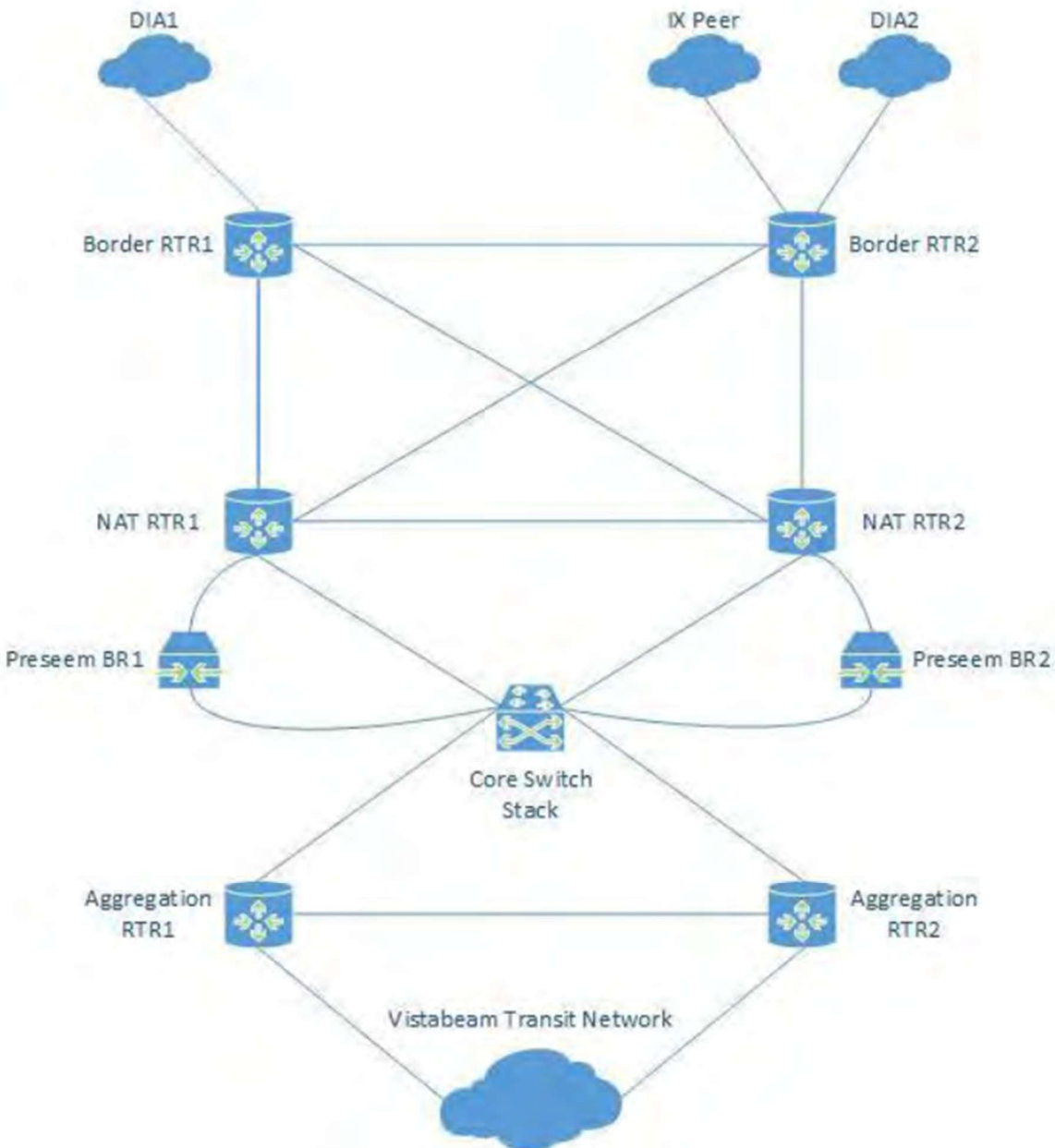


# VISTABEAM INTERNET

*Extraordinary* Connections

## Core Network

### Core Network Layout



[vistabeam.com](http://vistabeam.com)

PHONE 308-635-9434 TOLL FREE 888-251-0920 EMAIL [hello@vistabeam.com](mailto:hello@vistabeam.com)

**HEADQUARTERS:**  
1225 Sage Street  
Gering, NE 69341

**REGIONAL OFFICES:**  
304 South Main Street  
Yuma, CO 80759

1208 Center Avenue  
Mitchell, NE 69357

1839 Main Street  
Torrington, WY 82240

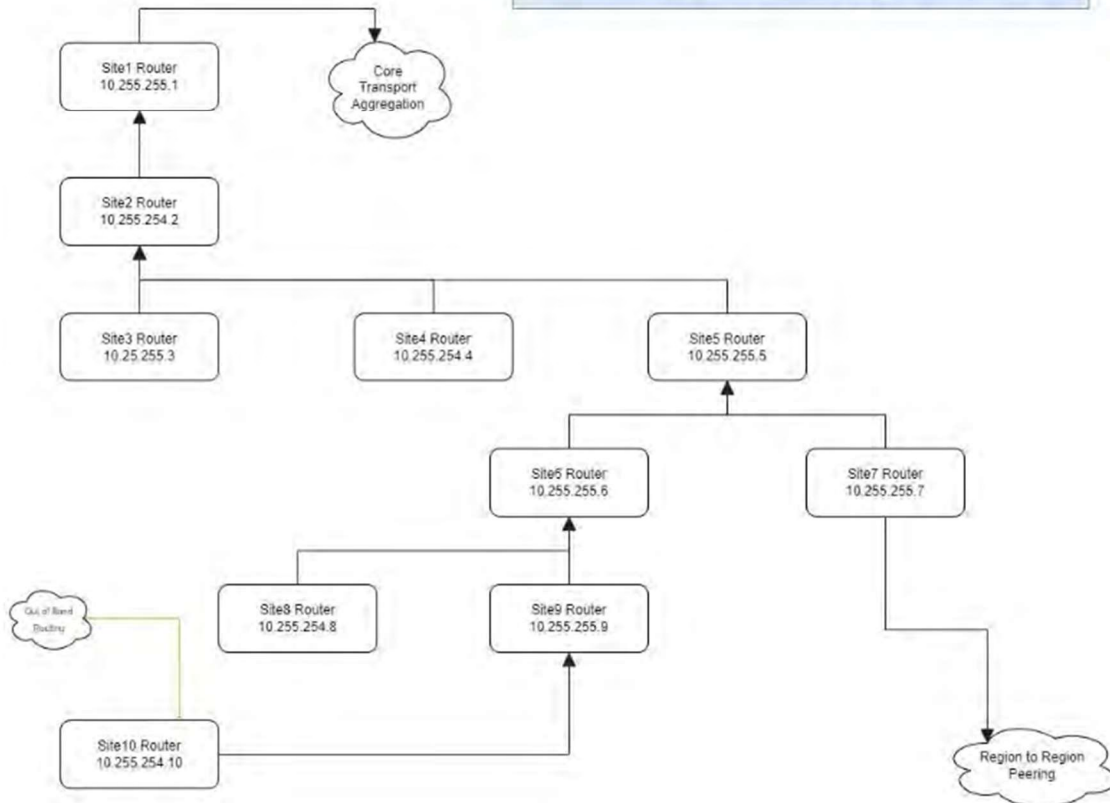


# VISTABEAM INTERNET

*Extraordinary* Connections

## Typical Segment Routing

Vistabeam - Typical Network Segment Routing



[vistabeam.com](http://vistabeam.com)

PHONE 308-635-9434 TOLL FREE 888-251-0920 EMAIL [hello@vistabeam.com](mailto:hello@vistabeam.com)

**HEADQUARTERS:**  
1225 Sage Street  
Gering, NE 69341

**REGIONAL OFFICES:**  
304 South Main Street  
Yuma, CO 80759

1208 Center Avenue  
Mitchell, NE 69357

1839 Main Street  
Torrington, WY 82240