



Scottsbluff North Project

Attachment E: Technical Capability

Project Quick Facts	
New Min Bandwidth	100 x 100 Mbps
New Max Bandwidth	1 x 1 Gbps
Locations Passed	170
New Fiber Installed	135,654 ft.

Great Plains Communications will construct 135,654 feet of new fiber optic facilities in rural Scottsbluff, Nebraska. The project will be constructed buried. GPC will leverage significant portions of its existing buried fiber and conduit, as well as its existing weather hardened central office building with both battery and generator back-up power supplies. The project will pass approximately 170 homes and businesses. This project will compliment previous and existing GPC Fiber-to-the-Home rural Scottsbluff builds. The newly constructed fiber plant will receive bandwidth from a GPC's extensive state and regional long-haul fiber network, which can provide multiple 100Gb bandwidth circuits for existing and future bandwidth needs in rural Scottsbluff from multiple regional Internet providers.

Because GPC is deploying Fiber to the Home, the network will be future proof and allow it to meet technical and speed requirements during the period. All of GPC's 83 field technicians in Nebraska are trained on all aspects of installation, troubleshooting and support. The remainder of the nearly 450 employee base stands ready to construct, provision, and support the network and customers in the short and long term.

The subsequent pages describe Great Plains Communications and its fantastic staff in further detail.

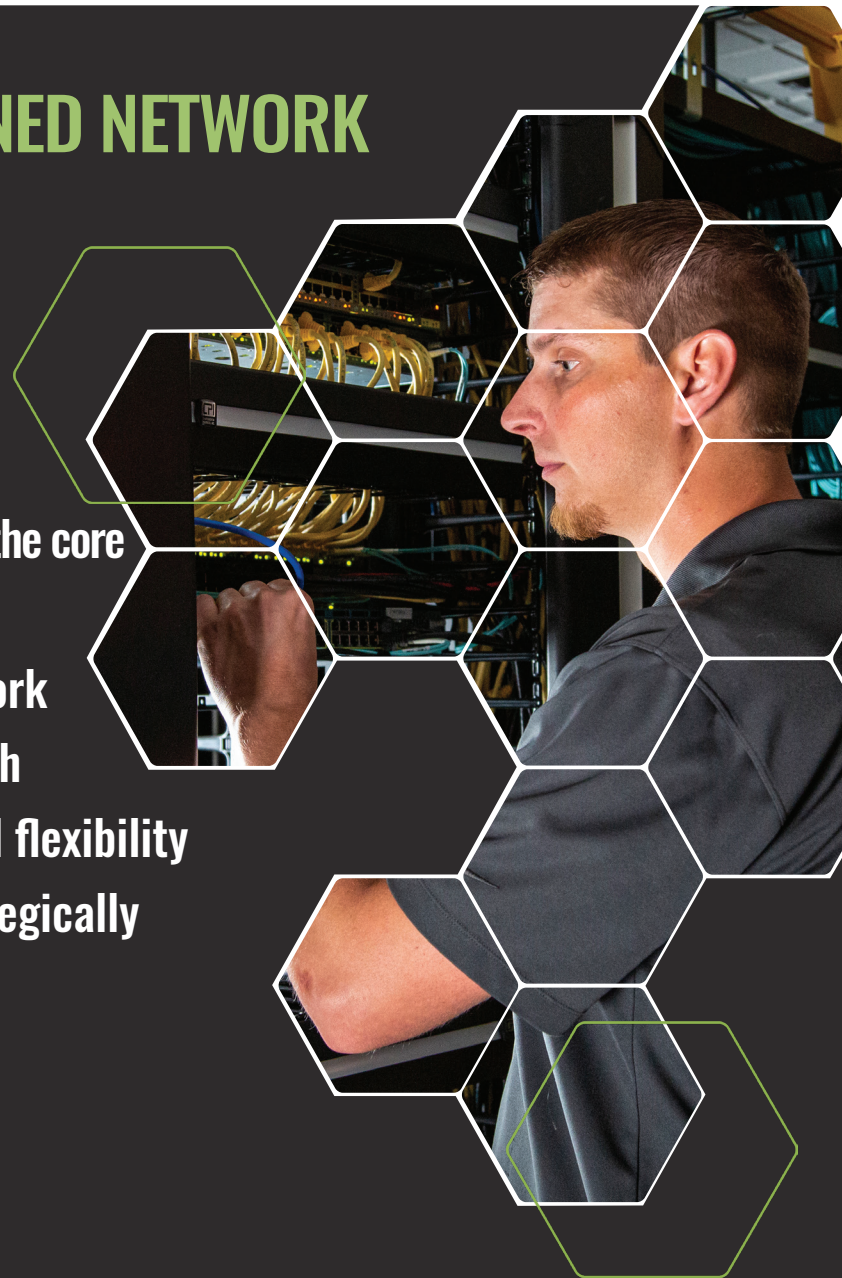


GREAT PLAINS COMMUNICATIONS is one of the largest privately owned telecommunications providers in the Midwest that serves communities throughout Nebraska, Iowa, Colorado and Indiana. Business and enterprise services range from traditional and cloud-based voice and data products to installation and support of strategic networks with fully scalable, managed Ethernet solutions. Residential services include high-speed Internet, cable and streaming video, local and long-distance phone and whole home WIFI. At the core of its service offering is an extensive 18,000-mile, MEF-certified regional fiber network reaching 13 states fully supported by a 24x7x365 Network Operations Center.

What sets our company apart is our exceptional customer service. From the first customer contact through design, turn-up, testing and maintenance you will work with a local team committed to developing custom solutions to help you achieve your business goals. Operating on the core values of accountability, community, integrity, quality, service and teamwork, we deliver the benefits of a high performing network and high performing people.

LARGEST PRIVATELY OWNED NETWORK IN NEBRASKA

- 99% buried fiber
- Unique routes
- MEF-certified
- Reliability - 99.999% availability on the core
- 18,000-mile fiber network
- Fully meshed transport core network
- Secure fiber network designed with ringed redundancy, scalability and flexibility
- Local presence - technicians strategically located across our fiber footprint



NETWORK OPERATIONS CENTER - QUALITY NEVER SLEEPS

- 24x7x365 network monitoring to ensure superior reliability and connectivity
- Proactive communication and monitoring to customer network
- Central point of contact for all network maintenance
- Rapid response to network outages and alarms

FIBER-DRIVEN SERVICES

POTENTIAL SERVICES FOR RESIDENTIAL AND ENTERPRISE CUSTOMERS

FIBER-DRIVEN BUSINESS SERVICES



Standard & Dedicated Internet Access

Symmetrical and assymetrical bandwidth up to 10 Gbps



DDoS Protection

Automated or on-demand attack traffic scrubbing service backed by teams of network security experts



Managed WIFI

Cloud-managed solutions with capability to provide guest and private WIFI networks



Traditional & Cloud-Based Voice

Solutions ranging from POTS lines, SIP trunks and PRIs to unified communications services



Managed Ethernet

Point-to-point, point-to-multipoint and multipoint-to-multipoint connections supported 24x7x365 by our Network Operations Center



Streaming TV

The latest entertainment, live sporting events and popular features over your business's GPC Internet connection



SD-WAN

Secure, reliable management of wide area networks from branch offices to data centers and the cloud



Business Security

Cloud-based security options including intrusion detection, video surveillance and access control powered by Alarm.com



GPC Cloud Connect

Provides a fast, flexible and secure direct connection to multiple leading Cloud and Network providers on our cloud ecosystem



Wireless Internet Backup

LTE backup Internet connection over popular cellular networks

FIBER-DRIVEN RESIDENTIAL SERVICES



Internet

Speeds ranging from 50 Mbps to 1 Gig



Whole Home WiFi

Personalized and secure home network with GPC Whole Home WiFi, powered by Plume HomePass®



Phone

Clear, reliable landline connection with local and long distance calling options



GPC iTV Streaming TV

The latest entertainment and most popular features delivered to your smart TV or wireless devices over your GPC Internet connection

OUR TEAM

WITH OVER 100 YEARS OF EXPERIENCE



Joe Pellegrini
President & Chief Operating Officer

25+ years of experience

Mr. Pellegrini leads the day-to-day operations of the company focusing on optimizing efficiencies, mitigating risks, enhancing the overall customer experience and the successful execution of deliverables. In addition, he leads teams to meet goals aligning with the company's strategic vision. Pellegrini has more than 25 years of leadership experience in the telecommunications industry in the areas of operations, wireless deployment, construction management, GIS mapping, vendor relations, service delivery, digital transformation and customer experience.



Tony Thakur
Chief Technology Officer

20+ years of experience

As the most senior technology executive in the organization, Mr. Thakur takes responsibility for leading and planning how to attain network growth, cost targets and other metrics required to meet annual corporate goals. Tony plays an integral role in the company's strategic direction and development and has overall responsibility for the long-range direction of technological planning. He establishes, communicates and maintains the technical architecture for corporate production, computing technologies and all network systems while ensuring the architecture can support the growing and changing needs of the business. Mr. Thakur puts his extensive experience to use by contributing to strategic decisions on expanding the fiber footprint, deploying capital, and supporting potential acquisitions, while positioning the company's service offerings as a leader in the communications industry.



Chris Wulf,
Vice President of Operations

25+ years of experience

Mr. Wulf directs, manages and coordinates activities of the Outside Plant Engineering and Operations Departments. He develops, establishes and evaluates the strategic operations plan for Great Plains Communications and directs and ensures attainment of operational, strategic and financial goals of Great Plains Underground Construction (GPUC) and Business Systems groups. He also directs and designates assignments and responsibilities to State Operations Managers. Chris also determines and specifies equipment needs and schedules and sets budgets and oversees timelines and budgets for his teams.



Travis Radnor
Sr. Director of Governmental Policy and Market Analysis

20+ years of experience

Mr. Radnor evaluates and prioritizes short-term and long-term Outside Plant (OSP) projects, evaluates strategic network opportunities and designs fiber optic, copper and coax network routes. He oversees the development of cost estimates for OSP capital budget projects and grant projects. Travis participates in customer discussions for the development of custom communications solutions as part of the sales process, coordinates joint OSP projects with other companies and evaluates and manages fiber leases.



Eric Halverson
District Manager

20+ years of experience

Mr. Halverson develops a team-oriented commitment to support a positive customer-service culture. He coordinates with all departments to plan and execute territory specific network projects and initiatives and effectively manages a Broadband Technician team. He also proactively engages with the public in the areas he serves to determine needs, enable growth, resolve issues, answer questions and report information back to the corporate office to ensure full community awareness. Eric sets priorities and standards for routine maintenance and network improvements in his respective territory and assists with marketing and sales efforts.

POSITIVE CULTURE AND COMMUNITY IMPACT

GREAT PLAINS COMMUNICATIONS NOT ONLY MAINTAINS A POSITIVE CULTURE AND COMMITMENT TO COMMUNITY, BUT IMPROVES AND ENHANCES PROGRAMS YEAR AFTER YEAR.

Great Plains Communications realizes the need to continue the tradition of giving back to the communities we serve and the need to exude and nurture the strong company culture that has been built over the past century. Therefore, the company continues our ongoing traditions of sponsoring our communities and having employees living, working and giving back to the areas they serve. These efforts and traditions not only solidify and leverage ongoing relationships with clients, they also strengthen and position us for strong growth as the brand gains traction in the marketplace.

COMMITMENT TO OUR SCHOOLS -

Great Plains Communications believes in the power of education. Therefore, we focus on helping students in the communities we serve attend college by offering \$35K in scholarships each year. We also provide over \$25K in annual grants.

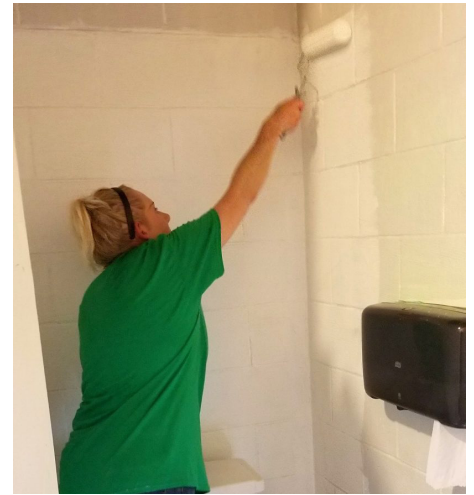


SPONSORSHIPS AND DONATIONS -

Great Plains Communications is proud to sponsor and donate to causes and events that help to promote and grow the communities we serve.

VOLUNTEERISM -

With both Integrity and Community as core values, Great Plains Communications believes in giving back. That is why over half of our 350+ employees live and work in the communities they serve. On top of this they actively take part in community causes by donating thousands of hours as firefighters, paramedics, mentors, board members, scout or church leaders and to other community-based organizations.



ECONOMIC DEVELOPMENT -

The GPC Economic Development Committee works to assist communities with growth initiatives. Serving as a true technology partner, the Committee works in tandem with area economic development organizations and local governments to identify opportunities and strategies that not only allow areas to survive, but to grow and thrive leveraging GPC fiber-driven services and capabilities to attract new residents and businesses.

CULTURE -

The internal culture of Great Plains Communications is very collaborative and focused on the core values of accountability, community, integrity, quality, service and teamwork. Employees strive to work together providing a superior customer experience and making a difference in the communities and to the customers served. We pride ourselves on making each other better and living up to our motto:

HIGH PERFORMING NETWORK, HIGH PERFORMING PEOPLE



AFFORDABLE CONNECTIVITY PROGRAM

Great Plains Communications participates in the Affordable Connectivity Program (ACP). The ACP is an FCC benefit program that ensures homes across the nation can afford the Internet connection they need for work, school, healthcare and more.

Eligible households can receive a discount of up to \$30 per month toward Internet service. Those on qualifying Tribal lands could receive a discount of up to \$75. This program also provides a one-time discount of \$100 toward the purchase of a laptop, desktop or tablet computer from participating providers as long as the qualifying household contributes more than \$10 and less than \$50 toward the purchase price.



Scan the QR code or visit gpcom.com/my-account to learn more!

RECENT EXPERIENCE

NEBRASKA BROADBAND BRIDGE PROGRAM

After receiving funding grants under the 2021 Nebraska Broadband Bridge Program, Great Plains Communications (GPC) constructed Fiber-to-the-Home and business networks in the community of Bloomfield, Nebraska. GPC cut customers over to the fiber in phases as construction was completed. The newly installed fiber plant receives bandwidth from GPC's 18,000-mile owned and operated state and regional long-haul fiber network, which will provide multiple 100 Gbps circuits to meet existing and future bandwidth needs.

BLOOMFIELD, NEBRASKA

PROJECT SUMMARY

GPC buried 185,000 feet of new fiber optic facility within the city of Bloomfield, Nebraska. The company leveraged 45,000 feet of existing buried conduit and 49,000 feet of new buried conduit to bring fiber to approximately 603 homes and businesses. The newly installed fiber plant brought increase Internet speeds up to 1 Gig in homes and businesses of the community.

COMMUNITY

QUICK FACTS

Homes & Businesses Passed
603

CARES ACT - NEBRASKA DEPARTMENT OF ECONOMIC DEVELOPMENT

After receiving funding grants under the 2020 Cares Act administered by the Nebraska Department of Economic Development (DED), GPC began constructing Fiber-to-the-Home and business networks in seven Nebraska rural communities in the Fall of 2020. GPC cut customers over to the fiber in phases as construction was completed. The newly installed fiber plants receive bandwidth from GPC's 18,000-mile owned and operated state and regional long-haul fiber network, which provides multiple 100 Gbps circuits to meet existing and future bandwidth needs.

CALLAWAY, NEBRASKA

PROJECT SUMMARY

Great Plains Communications (GPC) deployed a total of 120,000 feet of fiber throughout the City of Callaway utilizing some of our existing conduit. The original project plan was a combination of aerial and buried conduit. However, GPC was unable to use locally owned poles. Therefore, the original design was revised to be all-buried fiber. As of April 15, 2021, the project is 100% complete and customers have been converted over to fiber.

COMMUNITY

QUICK FACTS

Homes Passed
330

Businesses Passed
54

CREIGHTON, NEBRASKA

PROJECT SUMMARY

The project is a combination of 65% aerial and 35% buried fiber. GPC was able to utilize some existing conduit from a previous Alternative Connect America Model (ACAM) project. There is a total of 113,000 feet of fiber installed throughout Creighton. The project is currently underway with only 50 drops remaining and is scheduled for completion by July 1, 2021. GPC will be required to remove COAX from the Nebraska Public Power District (NPPD) poles by December 31, 2021.

COMMUNITY QUICK FACTS

Homes Passed
641

Businesses Passed
107

DESHLER, NEBRASKA

PROJECT SUMMARY

The project consists of a combination of 50% aerial and 50% buried fiber and utilizes some existing GPC conduit. There is a total of 110,000 feet of deployed fiber throughout the community. The project is currently ongoing and scheduled for completion by July 1, 2021. GPC iTV streaming video will be a new product in this community.

COMMUNITY QUICK FACTS

Homes Passed
426

Businesses Passed
49

GORDON, NEBRASKA

PROJECT SUMMARY

The project combines 35% aerial and 65% buried fiber with some existing conduit being utilized. A total of 200,000 feet of fiber has been deployed throughout the City of Gordon, and the project is currently ongoing with a scheduled completion date of July 1, 2021. GPC will be required to remove COAX from the NPPD poles by December 31, 2021.

COMMUNITY QUICK FACTS

Homes Passed
857

Businesses Passed
152

NORTH BEND, NEBRASKA

PROJECT SUMMARY

The project consists of 175,000 feet of 100% buried fiber deployed throughout the City of North Bend with some existing conduit being utilized. The project is in progress with a planned completion date of July 1, 2021.

COMMUNITY

QUICK FACTS

Homes Passed

698

Businesses Passed

70



RED CLOUD, NEBRASKA

PROJECT SUMMARY

There is a total of 139,000 feet of fiber being installed in Red Cloud utilizing some existing conduit. This project will include 60% buried fiber and 40% aerial. The project is currently ongoing with a scheduled completion date of August 1, 2021. GPC iTV streaming video will be a new product in Red Cloud.

COMMUNITY

QUICK FACTS

Homes Passed

683

Businesses Passed

113

SUTHERLAND, NEBRASKA

PROJECT SUMMARY

The Sutherland project combines 55% aerial and 45% buried fiber utilizing some existing conduit. There is a total of 200,000 feet of fiber being deployed with a completion date scheduled for mid-May, 2021. GPC will be required to remove COAX from the NPPD poles by December 31, 2021.

COMMUNITY

QUICK FACTS

Homes Passed

565

Businesses Passed

43

