

BEFORE THE NEBRASKA PUBLIC SERVICE COMMISSION

In the Matter of Great Plains) Application No.
Communications LLC, seeking transition)
of ongoing high-cost Nebraska Universal) **VERIFIED APPLICATION**
Service Support for eligible served)
locations in Windstream Nebraska, Inc.)
Support Areas.

Great Plains Communications LLC ("Applicant") files this application with the Public Service Commission ("Commission"), pursuant to the Commission's Rules of Procedure, seeking receipt of ongoing high-cost Nebraska Universal Service Fund ("NUSF") for locations for which Windstream Nebraska, Inc. the incumbent local exchange carrier ("ILEC") has carrier of last resort ("COLR") responsibilities and which are within the "Support Area or Support Areas," as further defined below. Applicant is currently offering fiber-based voice and broadband services to all locations in the Support Area(s). As the Application will set forth, the action sought is consistent with existing law, the Commission's NUSF Rules and Regulations, as well as orders entered in NUSF-139.

In support of its Application, Applicant provides the following:

1. A description of the Applicant's organizational structure (Exhibit A), including a certificate of good standing from the Nebraska Secretary of State (Exhibit B).
2. A demonstration that the Applicant is a Nebraska Eligible Telecommunications Carrier (Exhibit C, Affidavit of Great Plains Communications).
3. A commitment verified by the Affidavit (Exhibit C) to comply with all provisions of NEB. ADMIN. CODE, tit. 291, ch. 10, § 004.02(G).
4. A commitment verified by the Affidavit (Exhibit C) to fulfill to the Commission's satisfaction the following COLR obligations for so long as the Applicant receives NUSF support:

- a. Offer Voice Services to all locations in the Support Area in compliance with the Commission's rules and regulations.
 - b. Offer reliable Broadband Services to all locations in the Support Area at speeds required by Nebraska statute.
 - c. Offer affordable and reasonably comparable Voice Services and Broadband Services to all locations in the Support Area.
 - i. Rates for Voice Services will be no higher than the Voice Benchmark Rate established by the Commission.
 - ii. Rates for Broadband Services will comply with the Broadband Benchmark Rate established by the Commission.
 - d. Offer 911 and Telecommunications Relay services.
 - e. Participate in the Nebraska Telephone Assistant Program.
5. A description of the Support Area, showing by shapefile all Serviceable Locations for which support is sought is attached to the electronic filing of this Application as Exhibit D. Exhibit D includes a list of locations served/to be served.
6. A commitment to file the NUSF EARN Form, or any replacement filing, annually.
7. A commitment to file Commission-prescribed NETC certification reports annually.
8. A commitment to provide interconnection with any requesting carrier on a reasonable and nondiscriminatory basis.
9. A commitment to filing speed test data and meeting speed testing metrics consistent with the Commission's Orders in NUSF-133.
10. A commitment that NUSF support received will be used in a manner consistent with the requirements of the NUSF Act (NEB. REV. STAT. 86-316 - 86-329),

Commission Rules and Regulations, and any order or policy of the Commission relevant to the use of NUSF support.

11. An affirmation verified by the Affidavit (Exhibit C) that Applicant is not using or deploying communications equipment or service deemed to pose a threat to national security which is identified on the FCC's *List of Equipment and Services Covered by Section 2 of the Secure Networks Act* anywhere on its network.

12. Information responsive to the Commission's NUSF Rules and Regulations (NEB. ADMIN. CODE, tit. 291, ch. 10, § 004.02(G)(i)):

- a. **The cost of providing the supported services.** Applicant requests support for all Serviceable Locations in the Support Area based on modelling approved by the Commission in NUSF-139.
- b. **An estimate of the amount of NUSF high-cost program support needed in the area.** Applicant defers to the modelling approved by the Commission in NUSF-139.
- c. **Benefits to consumers.** Consumers already have access to Applicant's fiber-based telecommunications and broadband services at locations where the ILEC was not offering comparable services.
- d. **The supported services provided in unserved areas.** Applicant will comply with its COLR obligations as stated above.
- e. **A demonstration that the quality of service provided would equal the existing service or be better than service provided.** Such information is publicly available as part of Broadband Data Collection ("BDC") program administered by Federal Communications Commission ("FCC").

f. **Applicant will adopt existing interconnection agreements for the Support Area as needed to provide services,** consistent with the requirements of NUSF-139.

g. **Specific demonstration and documentation of the ability of the Applicant to offer service to everyone on its own network.** Such information is publicly available as part of the FCC's BDC program.

Having complied with all statutes, rules, regulations, and orders of the Commission, Applicant respectfully requests the Commission enter an Order:

1. Allocating ongoing high-cost support consistent with modelling under NUSF-139 to Applicant for all locations in the Support Area that are eligible for such support;

2. Subjecting Applicant to the following COLR duties for so long as it receives NUSF ongoing support:

a. Offer Voice Services to all locations in the Support Area in compliance with the Commission's rules and regulations.

b. Offer reliable Broadband Services to all locations in the Support Area at speeds required by Nebraska statute.

c. Offer affordable and reasonably comparable Voice Services and Broadband Services to all locations in the Support Area.

d. Rates for Voice Services will be no higher than the Voice Benchmark Rate established by the Commission.

e. Rates for Broadband Services will comply with the Broadband Benchmark Rate established by the Commission.

f. Offer 911 and Telecommunications Relay services.

g. Participate in the Nebraska Telephone Assistant Program.

3. Holding Applicant to the other commitments it has made in its Application.
4. Relieving ILEC of its COLR duties for all locations in the Support

Area.

October 31, 2025

Great Plains Communications LLC,
APPLICANT

By: Nicholas Holle

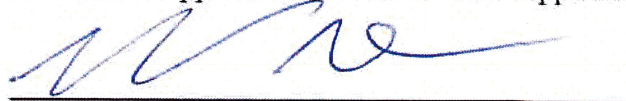
A handwritten signature in black ink, appearing to read 'Nicholas Holle', with a long horizontal flourish extending to the right.

General Counsel
1600 Great Plains Centre
P.O. Box 500
Blair NE 68008
402-456-6445

VERIFICATION

State of Nebraska)
)
County of Douglas)

Nicholas Holle, being first duly sworn on oath, deposes and states that he has read the foregoing Verified Application and that the information set forth therein is true to the best of his knowledge and belief and verifies the commitments made in the Verified Application on behalf of the Applicant.

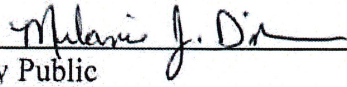


Nicholas Holle
General Counsel, Secretary

Subscribed and sworn to before me by Nicholas Holle on October 31, 2025.

(SEAL)

MELANIE J DICKINSON
General Notary - State of Nebraska
My Commission Expires Jun 23, 2028



Notary Public

Exhibit A

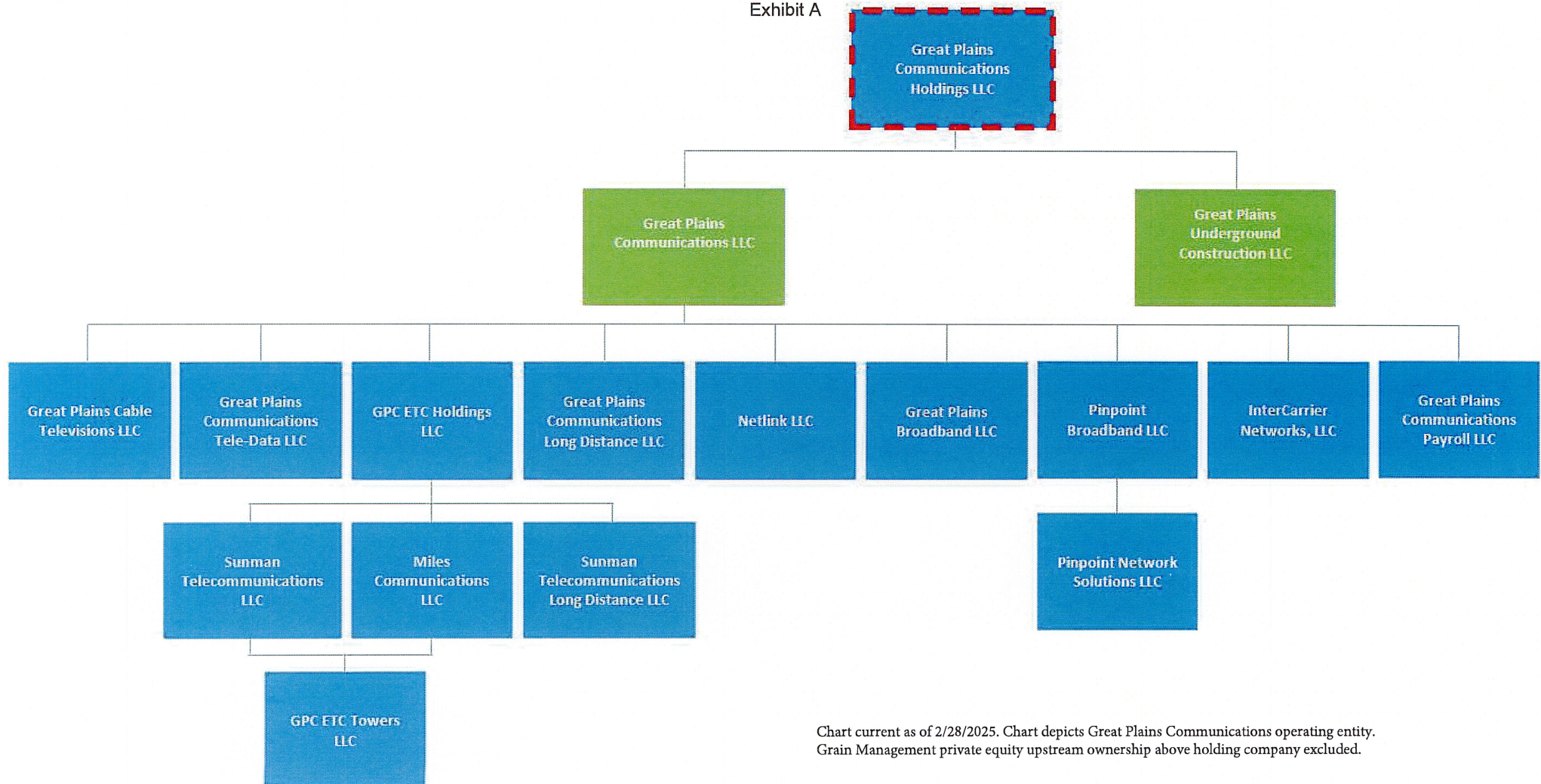


Chart current as of 2/28/2025. Chart depicts Great Plains Communications operating entity. Grain Management private equity upstream ownership above holding company excluded.

STATE OF NEBRASKA

United States of America, }
State of Nebraska }

Secretary of State
State Capitol
Lincoln, Nebraska

I, Robert B. Evnen, Secretary of State of the
State of Nebraska, do hereby certify that

GREAT PLAINS COMMUNICATIONS LLC

**a Delaware limited liability company is authorized to transact business in
Nebraska;**

**all fees, taxes, and penalties due under the Nebraska Uniform Limited
Liability Company Act or other law to the Secretary of State have been paid;**

**the Company's most recent biennial report required by section 21-125 has
been filed by the Secretary of State;**

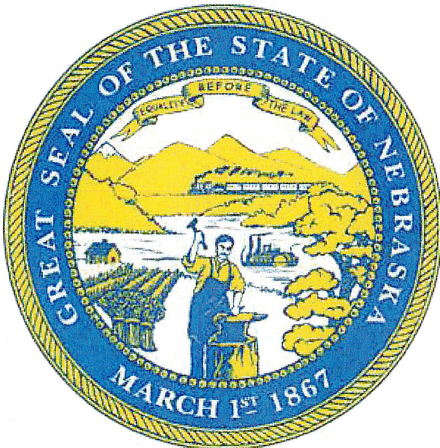
**the Secretary of State has not revoked the Company's Certificate of Authority
and has not filed a notice of cancellation.**

*This certificate is not to be construed as an endorsement,
recommendation, or notice of approval of the entity's financial
condition or business activities and practices.*

In Testimony Whereof,

I have hereunto set my hand and
affixed the Great Seal of the
State of Nebraska on this date of

February 19, 2025



A handwritten signature in black ink, reading "Robert B. Evnen".

Secretary of State



AFFIDAVIT OF GREAT PLAINS COMMUNICATIONS LLC IN SUPPORT OF APPLICATION FOR NUSF HIGH-COST SUPPORT

State of Nebraska

I, Todd Foje, being first duly sworn, hereby state and affirm as follows:

1. Organizational Structure

Great Plains Communications is a LLC in good standing with the Nebraska Secretary of State. A current Certificate of Good Standing is attached hereto.

2. Nebraska Eligible Telecommunications Carrier Status

Great Plains Communications is a Nebraska Eligible Telecommunications Carrier ("NETC"), and is authorized to receive ongoing NUSF support in Nebraska.

3. Election to Serve as COLR

Great Plains Communications elects to assume COLR obligations in the described service area.

4. Service Area Description

The designated service area for which Great Plains Communications seeks NUSF high-cost support is specifically described in Exhibit D attached hereto.

5. Commitment to Universal Service

Great Plains Communications commits to offering service to every location within the designated service area.

6. Service Capability

Great Plains Communications demonstrates that it provides voice and broadband service with minimum speeds of 100 Mbps download and 20 Mbps upload to locations in the designated service area, including, but not limited to, locations reported as serviceable through the FCC Broadband Data Collection process.

7. Public Safety and Supported Services

Great Plains Communications commits to providing NUSF-supported services including, but not limited to, 911 and Telecommunications Relay services.

8. Affordability and Benchmark Compliance

Great Plains Communications commits to offering affordable and reasonably comparable services at rates which are at or below the benchmark rate established by the Commission.

9. Regulatory Reporting Commitments

Great Plains Communications commits to filing the NUSF EARN Form on an annual basis, as well as the Commission-prescribed NETC certification reports on an annual basis.

10. Interconnection Commitment

Great Plains Communications commits to providing interconnection with any requesting carrier on a reasonable and nondiscriminatory basis.

11. Speed Testing Compliance

Great Plains Communications commits to filing speed test data and meeting speed testing metrics consistent with the Commission's Orders in Docket No. NUSF-133.

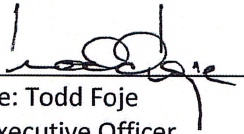
12. Use of Funds

Great Plains Communications affirms that all NUSF support received will be used in a manner consistent with the requirements of the NUSF Act (Neb. Rev. Stat. §§ 86-316 through 86-329), Commission rules and regulations, and applicable Commission orders relevant to the use of NUSF high-cost support.

13. National Security Compliance

Great Plains Communications affirms that it is not using or deploying any communications equipment or services deemed to pose a threat to national security, as identified on the FCC and State of Nebraska's Covered List, anywhere within its network.

Signature: _____



Printed Name: Todd Foje

Title: Chief Executive Officer

Company: Great Plains Communications

Date: October 31, 2025

Great Plains Communications LLC
Windstream Nebraska, Inc. Service Areas
Exhibit D

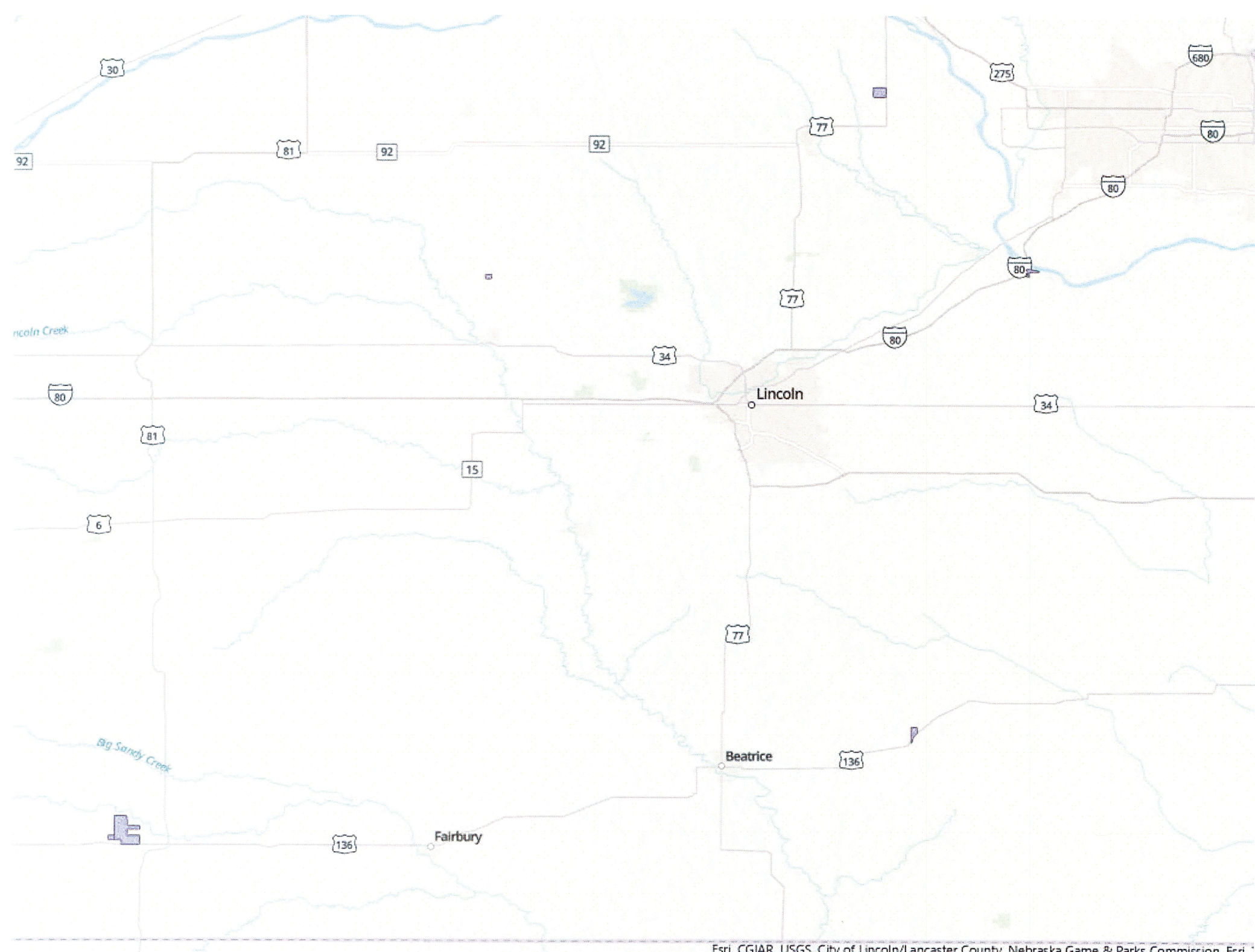
Description of Support Area(s)

Locations are located within the service area of Windstream Nebraska, Inc. ("Windstream").

The locations within the Windstream Service Areas were awarded in conjunction with Application No. NUSF-131, Progression Order No. 2. and NUSF-131, Progression Order No. 3.

The locations are listed on the attached Excel file.

Supporting map data in shapefile format is attached in electronic format.



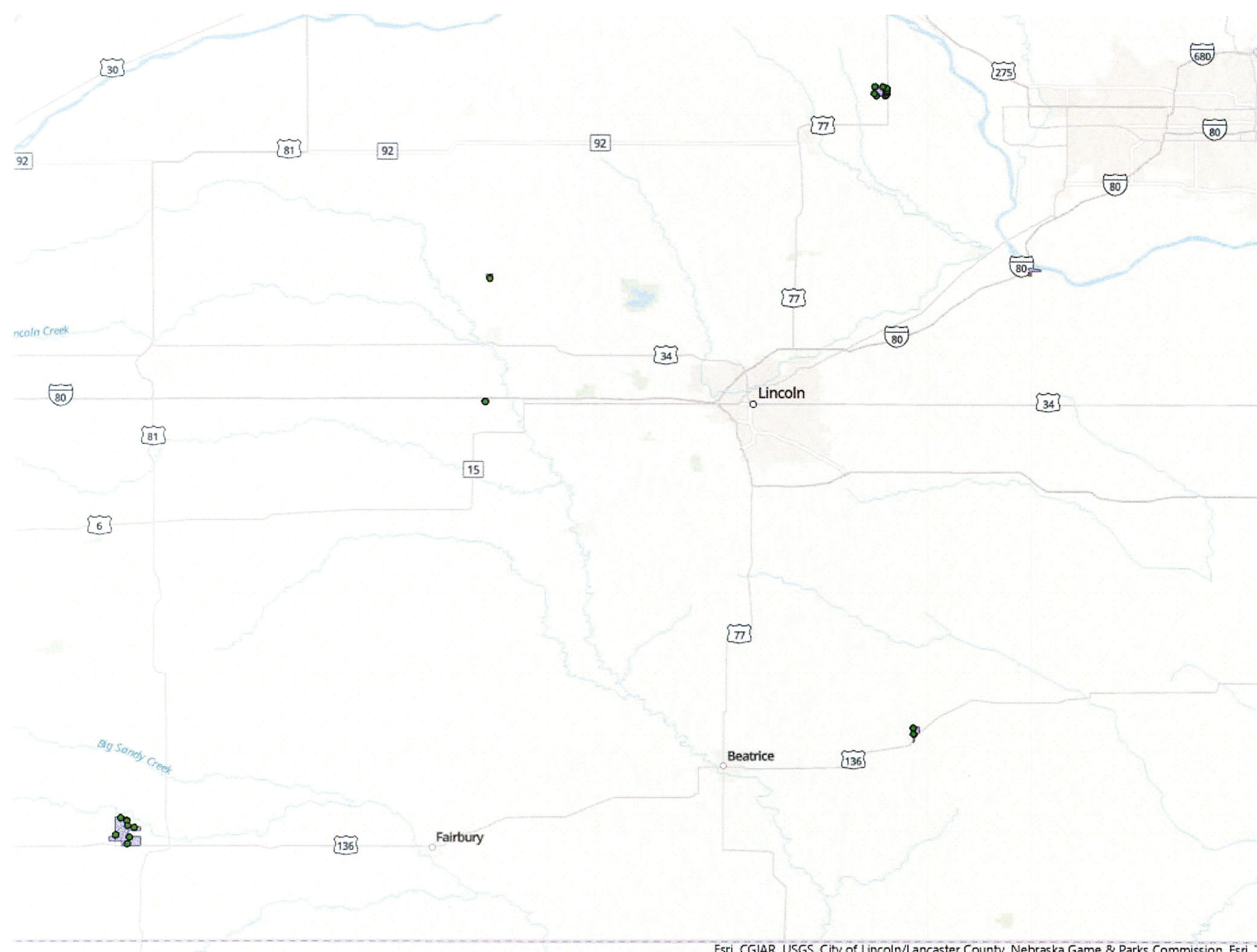


Exhibit D

MBU	address	city	state	zip	county	resbu	census_cod	X_Coord	Y_Coord
15933682	72376 606 AVE	FILLEY	NE	68357-6062	Johnson	R	310979675002000	-96.462726	40.315727
15933682	72432 606 AVE	FILLEY	NE	68357-6063	Johnson	R	310979675002000	-96.463306	40.325120
15933682	72376 S 190 RD	CRAB ORCHARD	NE	68332	Johnson	U	310979675002000	-96.463013	40.315830
15925910	4742 ROAD G	HARDY	NE	68943-8823	Nuckolls	B	311299600001000	-97.851396	40.091029
12951	1186 COUNTY ROAD P	MEAD	NE	68041-4060	Saunders	R	311559681002000	-96.519975	41.278672
12951	1110 COUNTY ROAD P	MEAD	NE	68041-4060	Saunders	R	311559681002000	-96.506328	41.278647
12951	1941 COUNTY ROAD 12	MEAD	NE	68041-4062	Saunders	R	311559681002000	-96.523169	41.282165
12951	1990 COUNTY ROAD 12	MEAD	NE	68041-4062	Saunders	R	311559681002000	-96.522242	41.292561
12951	1935 COUNTY ROAD 11	MEAD	NE	68041-4018	Saunders	R	311559681002000	-96.504264	41.281039
12951	1965 COUNTY ROAD 11	MEAD	NE	68041-4018	Saunders	R	311559681002000	-96.503827	41.287159
12951	1951 COUNTY ROAD 11	MEAD	NE	68041-4018	Saunders	U	311559681002000	-96.504745	41.284548
12951	1955 COUNTY ROAD 11	MEAD	NE	68041-4018	Saunders	R	311559681002000	-96.503895	41.286263
12951	1981 COUNTY ROAD 11	MEAD	NE	68041-4018	Saunders	U	311559681002000	-96.504274	41.290243
12951	1133 COUNTY ROAD Q	MEAD	NE	68041-4017	Saunders	B	311559681002000	-96.510194	41.292488
2671	2768 NE-80B-SPUR	BEE	NE	68314	Seward	U	311599601002000	-97.096386	41.003597
2671	2768 ROCK CREEK RD	BEE	NE	68314-9129	Seward	U	311599601002000	-97.096181	41.003119
3241	923 280TH	SEWARD	NE	68434-7614	Seward	U	311599604002000	-97.102737	40.816856
3241	923 280TH	SEWARD	NE	68434-7614	Seward	U	311599604002000	-97.102424	40.816855
5801	5943 ROAD N	HEBRON	NE	68370-3105	Thayer	R	311699632002000	-97.623310	40.175341
5801	1214 ROAD 5800	HEBRON	NE	68370-1044	Thayer	R	311699632002000	-97.650939	40.164017
5801	5911 ROAD M	HEBRON	NE	68370-1060	Thayer	R	311699632002000	-97.630459	40.160615
5801	5843 ROAD P	HEBRON	NE	68370-1065	Thayer	R	311699632002000	-97.643456	40.189883
5801	1125 ROAD 5900	HEBRON	NE	68370-1067	Thayer	R	311699632002000	-97.633515	40.150560
5801	1359 ROAD 5900	HEBRON	NE	68370-1068	Thayer	R	311699632002000	-97.634137	40.185421
5801	1311 ROAD 5900	HEBRON	NE	68370-1068	Thayer	R	311699632002000	-97.633151	40.177898